



TUNING

***GDP TUNING
AUTOCAL***

Instruction Manual

-WARNING!-

THIS IS A HIGH PERFORMANCE PRODUCT TO BE USED AT YOUR OWN RISK!

Do not install this product until you have read and fully understand the following disclaimer of liability. The following disclaimer of liability sets forth the terms and conditions for the installation and/or use of this product. By installing this high performance product, the buyer acknowledges that they have read and fully understand this disclaimer and accepts its terms and conditions.

DISCLAIMER OF LIABILITY

GDP TUNING, and their successors, distributors, jobbers, dealers, and retailers (SELLER) shall in no way be responsible for any direct, indirect, or consequential damage resulting from improper installation and/or use of this product. The BUYER/USER assumes all responsibility for any damage resulting from the use or misuse of this product. The buyer hereby waives all liability claims for the use of this product. The BUYER acknowledges that he/she is not relying on the SELLER's skill or judgment to select or furnish goods suitable for any particular purpose and that there are no liabilities which extend beyond the description herein, and the BUYER hereby waives all remedies or liabilities, expressed or implied, arising by law or otherwise, (including without any obligations of the SELLER with respect to fitness, merchantability and consequential damages) or whether or not occasioned by the SELLER's negligence. The SELLER disclaims any warranty and expressly disclaims any liability for personal injury or damages. The BUYER acknowledges and agrees that the disclaimer of any liability for personal injury is a material term for this agreement and the BUYER agrees to indemnify the SELLER and to hold the SELLER harmless from any claim related to the product purchased. Under no circumstances will the SELLER be liable for any damages or expenses by reason of use or sale of any such products. The SELLER assumes no liability regarding the improper installation, misuse, or misapplication of its products. It is the buyer and/or installer's responsibility to check for proper installation.

TECH SUPPORT

IF YOU REQUIRE ANY TECHNICAL OR INSTALLATION ASSISTANCE, PLEASE CONTACT:

TECH SUPPORT: 1-877-223-5018 **HOURS:** M-F, 8-5 (MST)

EMAIL: tech@gdptuning.com

CUSTOMER SUPPORT

FOR ORDER/PRODUCT INFORMATION AND GENERAL QUESTIONS, PLEASE CONTACT:

CUSTOMER SUPPORT: 1-208-359-9939

EMAIL: support@gdptuning.com

LIMITATION OF WARRANTY

GDP TUNING, ("SELLER") gives Limited Warranty as to the description, quality, merchantability, fitness for any product's purpose, or any other matter of SELLER's product sold herewith. The SELLER shall be in no way responsible for the product's use and service and the BUYER hereby waives all rights other than those expressly written herein. This Warranty shall not be varied except by a written agreement signed and dated by SELLER and BUYER.

The Warranty is Limited to one (1) year from the date of sale and limited solely to the parts contained within the product's original packaging. All products that are in question of Warranty must be returned shipping prepaid to the SELLER and must be accompanied by a dated proof of purchase receipt. All Warranty claims are subject to approval by GDP TUNING.

Under no circumstances shall the SELLER be liable for any labor charges incurred, or travel time incurred in diagnosis for defects, removal, or re-installation of this product, or any other contingent expenses. Any product deemed defective and consequently repaired or replaced by SELLER, shall retain the remainder of the warranty period from date of purchase, as the warranty period shall not be extended due to repair or replacement. Under no circumstances will the SELLER be liable for any damage or expenses incurred by reason of the use or sale of any such product.





TABLE OF CONTENTS

1) 2007.5-2009 DODGE 6.7L CUMMINS

1.1) CSP-5 Install1
1.2) Power Levels2
1.3) Power Level Adjustment2
1.4) Diagnostics2

2) 2010-2012 DODGE 6.7L CUMMINS

2.1) Power Levels/CSP-5 Install3
2.2) Multi-Tune Install4
2.3) CSP5/Multi-Tune LevelsAdjust5
2.4) Pwr Level Adjust Cont/Diag6

3) 2013-2016 DODGE 6.7L CUMMINS

3.1) Power Levels/CSP-4 Install7
3.2) Multi-Tune Install8
3.3) CSP4/Multi-Tune LevelsAdjust9
3.4) Pwr Level Adjust Cont/Diag10

4) 2001-2005 GM 6.6L DURAMAX

4.1) DSP-5 Tuning Installation11
4.2) Power Levels12
4.3) Power Level Adjustment12
4.4) Diagnostics12

5) 2006-2010 GM 6.6L Duramax

5.1) DSP-5 Tuning Installation13
5.2) Power Levels14
5.3) Power Level Adjustment14
5.4) Diagnostics14

6) 2011-2016 GM 6.6L DURAMAX

6.1) LML Duramax Tune Installation15
6.2) Power Levels16
6.3) Power Level Adjustment16
6.4) Diagnostics16



2007.5-2009 DODGE 6.7L CUMMINS

2007.5-2009 CUMMINS

2007.5-2009 6.7L Cummins tunes are configured in CSP-5 format. This configuration allows two different methods of power level adjustment.

CSP-5 TUNING INSTALLATION

STEP 1-

Plug the AutoCal directly into the trucks OBD port. Do **NOT** attempt to flash through a CSP-5 switch.

STEP 2-

Turn the key to the run position, do **NOT** start the engine.

STEP 3-

Click **NEXT** until you see **FULL 1 PRELOAD** displayed on the screen. Click **OK** and follow the prompts on the screen. You will be asked if you want to license the **ECU**, click **OK** and wait for the download to complete. Once the download finishes you will be prompted to turn the key off, do so and then click **OK**. Wait for the countdown to complete, once it does the AutoCal will revert back to the menu and display **FULL 1 PRELOAD**. Disconnect the AutoCal at this point and start the vehicle. Once verifying the vehicle will start, shut the engine off and continue to **STEP 4**.

STEP 4-

Repeat steps 1 and 2. Click **NEXT** until you see **FULL 2 CSP5** displayed on the screen. Click **OK** and follow the prompts on the screen. Wait for the download to complete. Once the download finishes you will be prompted to turn the key off, do so and then click **OK**. Wait for the countdown to complete, once it does the AutoCal will revert back to the menu and display **FULL 2 CSP5**. You may disconnect the AutoCal and start the vehicle, the CSP5 tune installation process has been completed.



2007.5-2009 DODGE 6.7L CUMMINS

2007.5-2009 CUMMINS

POWER LEVELS

Switch Position	Power Level Name	HP Rating
#1	NO POWER	+20HP
#2	TOW	+50HP
#3	STREET	+90HP
#4	PERFORMANCE	+120HP
#5	RAMPAGE	+175HP

CSP5 POWER LEVEL ADJUSTMENT

Option 1: CSP-5 SWITCH

Plug the switch into the trucks OBD port and tune adjustment is as simple as turning the adjustment knob to the desired position.

Option 2: “SWITCH TUNES” AutoCal Menu Option

Plug the AutoCal into the trucks **OBD** port and turn the key to the run position. Click **NEXT** until **SWITCH TUNES** is displayed on the screen. Click **OK** and then scroll up and down through the list using the **NEXT** and **PREVIOUS** buttons. Once your desired power level is displayed, click **OK** to select the tune. Your AutoCal will quickly display **TUNE SWITCHED** and will then revert back to the main menu. You are safe to unplug the AutoCal and start the truck at this point.

DIAGNOSTICS

Your AutoCal will act as a scan tool to read and clear diagnostic trouble codes.

Display DTCs

Plug the AutoCal into the trucks **OBD** port and turn the key to the run position. **Display DTCs** is the first option on the menu, click **OK**. The AutoCal will then display the trouble codes on the screen, if any are present.

Erase DTCs

Plug the AutoCal into the trucks **OBD** port and turn the key to the run position. Click **NEXT** until **Erase DTCs** is displayed and then push **OK**. You will be asked if you want to erase the codes, click **OK**.



2010-2012 DODGE 6.7L CUMMINS

2010-2012 CUMMINS

2010-2012 6.7L Cummins tunes are configured in CSP-5 or Multi-Tune formats.

Multi-Tune POWER LEVELS

CSP5 POWER LEVELS

Switch Position	Power Level Name	HP Rating
#1	NO POWER	+20HP
#2	TOW	+50HP
#3	STREET	+90HP
#4	PERFORMANCE	+120HP
#5	RAMPAGE	+150HP

Switch Position	Power Level Name	HP Rating
#1	NO POWER	+20HP
#2	TOW	+50HP
#3	PERFORMANCE	+120HP

CSP-5 TUNING INSTALLATION

STEP 1-

Plug the AutoCal directly into the trucks OBD port. Do **NOT** attempt to flash through a CSP-5 switch.

STEP 2-

Turn the key to the run position, do **NOT** start the engine.

STEP 3-

Click **NEXT** until you see **FULL 1 PRELOAD** displayed on the screen. Click **OK** and follow the prompts on the screen. You will be asked if you want to license the **ECU**, click **OK** and wait for the download to complete. Once the download finishes you will be prompted to turn the key off, do so and then click **OK**. Wait for the countdown to complete, once it does the AutoCal will revert back to the menu and display **FULL 1 PRELOAD**. Disconnect the AutoCal at this point and start the vehicle. Once verifying the vehicle will start, shut the engine off and continue to **STEP 4**.

STEP 4-

Repeat steps 1 and 2. Click **NEXT** until you see **FULL 2 CSP5** displayed on the screen. Click **OK** and follow the prompts on the screen. Wait for the download to complete. Once the download finishes you will be prompted to turn the key off, do so and then click **OK**. Wait for the countdown to complete, once it does the AutoCal will revert back to the menu and display **FULL 2 CSP5**. You may disconnect the AutoCal and start the vehicle, the tune installation process has been completed.



2010-2012 DODGE 6.7L CUMMINS

2010-2012 CUMMINS

MULTI-TUNE INSTALLATION

STEP 1-

Plug the AutoCal directly into the trucks OBD port. Do **NOT** attempt to flash through a CSP-5 switch.

STEP 2-

Turn the key to the run position, do **NOT** start the engine.

STEP 3-

Click **NEXT** until you see **FULL 1 PRELOAD** displayed on the screen. Click **OK** and follow the prompts on the screen. You will be asked if you want to license the **ECU**, click **OK** and wait for the download to complete. Once the download finishes you will be prompted to turn the key off, do so and then click **OK**. Wait for the countdown to complete, once it does the AutoCal will revert back to the menu and display **FULL 1 PRELOAD**. Disconnect the AutoCal at this point and start the vehicle. Once verifying the vehicle will start, shut the engine off and continue to **STEP 4**.

STEP 4-

Repeat steps 1 and 2. Click **NEXT** until you see **FULL 2 TOW** displayed on the screen. Click **OK** and follow the prompts on the screen. Wait for the download to complete. Once the download finishes you will be prompted to turn the key off, do so and then click **OK**. Wait for the countdown to complete, once it does the AutoCal will revert back to the menu and display **FULL 2 TOW**. You may disconnect the AutoCal and start the vehicle, the tune installation process has been completed.

***The “TOW” power level comes loaded default on all AutoCal tuners. To install a different power level, please refer to the “Multi-Tune Power Level Adjustment” section or visit www.gdptuning.com and check the videos section.**



2010-2012 DODGE 6.7L CUMMINS

2010-2012 CUMMINS

CSP5 POWER LEVEL ADJUSTMENT

CSP-5 SWITCH

Plug the switch into the trucks OBD port and tune adjustment is as simple as turning the adjustment knob to the desired position.

“SWITCH TUNES” AutoCal Menu Option

Plug the AutoCal into the trucks **OBD** port and turn the key to the run position. Click **NEXT** until **SWITCH TUNES** is displayed on the screen. Click **OK** and then scroll up and down through the list using the **NEXT** and **PREVIOUS** buttons. Once your desired power level is displayed, click **OK** to select the tune. Your AutoCal will quickly display **TUNE SWITCHED** and will then revert back to the main menu. You are safe to unplug the AutoCal and start the truck at this point.

MULTI-TUNE POWER LEVEL ADJUSTMENT

Step 1 -

Download and install the EFI Live software on your computer. Visit www.gdptuning.com and click on the “Support” tab, there you will find a link to download this software.

Step 2 -

Plug your AutoCal and the thumb drive that was included in your package in to your computer.

Step 3 -

- Open up the EFI Live Explorer program.
- Ensure that there is a green check mark on the AutoCal logo in the lower right corner.
- In the top left box, click on the “GDP TUNING” thumb drive icon. Your tunes will appear in the top right hand box.
- Delete whichever power level is currently in the lower right hand box underneath “Filename”. LEAVE THE PRE-LOAD FILE IN THIS BOX!
- Left click one time on the desired power level shown in the top right box and then click, hold and drag that file in to the lower right hand box. Drop it underneath the Pre-Load file.
- Once the “Operation in Progress” bar completes and you see your desired tune listed underneath the Pre-Load file in the lower right box, you’re finished at the computer and you may unplug the tuner.
- To install the new power level, follow the Multi-Tune Installation steps 1, 2 and 4. You DO NOT need to flash the Pre-Load file on the truck again.

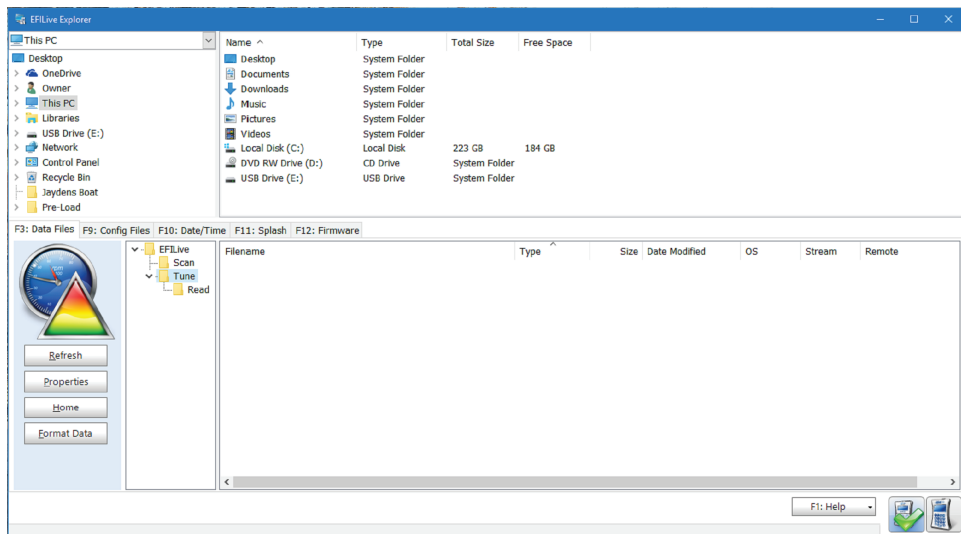


2010-2012 DODGE 6.7L CUMMINS

2010-2012 CUMMINS

MULTI-TUNE POWER LEVEL ADJUSTMENT Continued

- Your Screen Should Look Similar To This -



DIANGOSTICS

Your AutoCal will act as a scan tool to read and clear diagnostic trouble codes.

Display DTCs

Plug the AutoCal into the trucks **OBD** port and turn the key to the run position. **Display DTCs** is the first option on the menu, click **OK**. The AutoCal will then display the trouble codes on the screen, if any are present.

Erase DTCs

Plug the AutoCal into the trucks **OBD** port and turn the key to the run position. Click **NEXT** until **Erase DTCs** is displayed and then push **OK**. You will be asked if you want to erase the codes, click **OK**.



2013-2016 DODGE 6.7L CUMMINS

2013-2016 CUMMINS

2013-2016 6.7L Cummins tunes are offered in CSP-4 or Multi-Tune format.

CSP5 POWER LEVELS

Switch Position	Power Level Name	HP Rating
#1	NO POWER	+20HP
#2	TOW	+60HP
#3	STREET	+90HP
#4	PERFORMANCE	+130HP

Multi-Tune POWER LEVELS

Switch Position	Power Level Name	HP Rating
#1	NO POWER	+20HP
#2	TOW	+60HP
#3	STREET	+90HP

BEFORE INSTALLING YOUR CSP-4 TUNE YOU MUST FIRST UNLOCK YOUR PCM WITH A BULLY DOG GT AND UNLOCK CABLE. PLEASE REFER TO THE BULLY DOG INSTRUCTION MANUAL FOR REFERENCE

CSP-4 TUNING INSTALLATION

STEP 1-

Plug the AutoCal directly into the trucks OBD port. Do **NOT** attempt to flash through a CSP-4 switch.

STEP 2-

Turn the key to the run position, do **NOT** start the engine.

STEP 3-

Click **NEXT** until you see **FULL 1 CSP4** displayed on the screen. Click **OK** and follow the prompts on the screen. You will be asked if you want to license the **ECU**, click **OK** and wait for the download to complete. Once the download finishes you will be prompted to turn the key off, do so and then click **OK**. Wait for the countdown to complete, once it does the AutoCal will revert back to the menu and display **FULL 1 CSP4**. You may disconnect the AutoCal and start the vehicle, the tune installation process has been completed.



2013-2016 DODGE 6.7L CUMMINS

2013-2016 CUMMINS

MULTI-TUNE INSTALLATION

STEP 1-

Plug the AutoCal directly into the trucks OBD port. Do **NOT** attempt to flash through a CSP-5 switch.

STEP 2-

Turn the key to the run position, do **NOT** start the engine.

STEP 3-

Click **NEXT** until you see **FULL 1 PRELOAD** displayed on the screen. Click **OK** and follow the prompts on the screen. You will be asked if you want to license the **ECU**, click **OK** and wait for the download to complete. Once the download finishes you will be prompted to turn the key off, do so and then click **OK**. Wait for the countdown to complete, once it does the AutoCal will revert back to the menu and display **FULL 1 PRELOAD**. Disconnect the AutoCal at this point and start the vehicle. Once verifying the vehicle will start, shut the engine off and continue to **STEP 4**.

STEP 4-

Repeat steps 1 and 2. Click **NEXT** until you see **FULL 2 TOW** displayed on the screen. Click **OK** and follow the prompts on the screen. Wait for the download to complete. Once the download finishes you will be prompted to turn the key off, do so and then click **OK**. Wait for the countdown to complete, once it does the AutoCal will revert back to the menu and display **FULL 2 TOW**. You may disconnect the AutoCal and start the vehicle, the tune installation process has been completed.

***The “TOW” power level comes loaded default on all AutoCal tuners. To install a different power level, please refer to the “Multi-Tune Power Level Adjustment” section or visit www.gdptuning.com and check the videos section.**



2013-2016 DODGE 6.7L CUMMINS

2013-2016 CUMMINS

CSP4 POWER LEVEL ADJUSTMENT

CSP-4 SWITCH

Plug the switch into the trucks OBD port and tune adjustment is as simple as turning the adjustment knob to the desired position.

“SWITCH TUNES” AutoCal Menu Option

Plug the AutoCal into the trucks **OBD** port and turn the key to the run position. Click **NEXT** until **SWITCH TUNES** is displayed on the screen. Click **OK** and then scroll up and down through the list using the **NEXT** and **PREVIOUS** buttons. Once your desired power level is displayed, click **OK** to select the tune. Your AutoCal will quickly display **TUNE SWITCHED** and will then revert back to the main menu. You are safe to unplug the AutoCal and start the truck at this point.

MULTI-TUNE POWER LEVEL ADJUSTMENT

Step 1 -

Download and install the EFI Live software on your computer. Visit www.gdptuning.com and click on the “Support” tab, there you will find a link to download this software.

Step 2 -

Plug your AutoCal and the thumb drive that was included in your package in to your computer.

Step 3 -

- Open up the EFI Live Explorer program.
- Ensure that there is a green check mark on the AutoCal logo in the lower right corner.
- In the top left box, click on the “GDP TUNING” thumb drive icon. Your tunes will appear in the top right hand box.
- Delete whichever power level is currently in the lower right hand box underneath “Filename”.
- Left click one time on the desired power level shown in the top right box and then click, hold and drag that file in to the lower right hand box. Drop it underneath the Pre-Load file.
- Once the “Operation in Progress” bar completes and you see your desired tune listed underneath the Pre-Load file in the lower right box, you’re finished at the computer and you may unplug the tuner.
- To install the new power level, follow the Multi-Tune Installation steps.

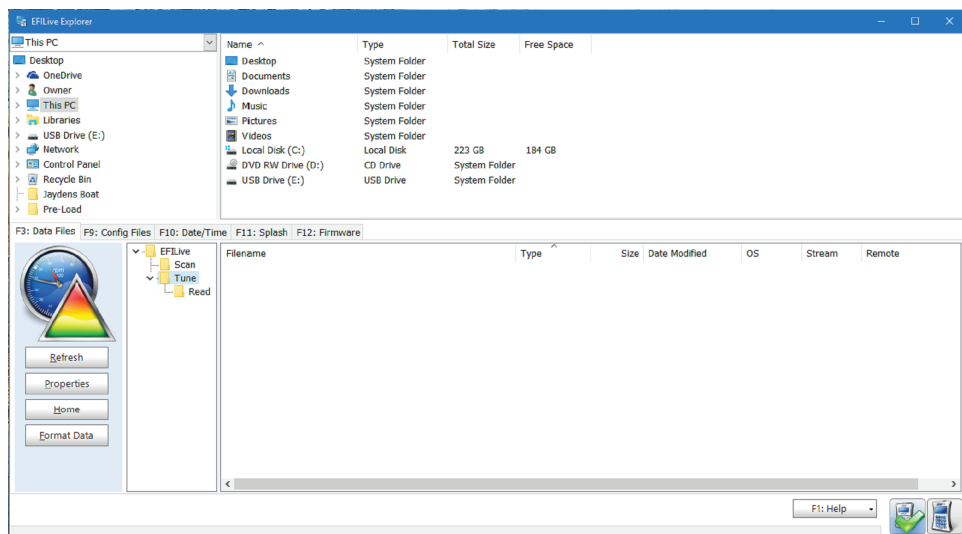


2013-2016 DODGE 6.7L CUMMINS

2013-2016 CUMMINS

MULTI-TUNE POWER LEVEL ADJUSTMENT Continued

- Your Screen Should Look Similar To This -



DIANGOSTICS

Your AutoCal will act as a scan tool to read and clear diagnostic trouble codes.

Display DTCs

Plug the AutoCal into the trucks **OBD** port and turn the key to the run position. **Display DTCs** is the first option on the menu, click **OK**. The AutoCal will then display the trouble codes on the screen, if any are present.

Erase DTCs

Plug the AutoCal into the trucks **OBD** port and turn the key to the run position. Click **NEXT** until **Erase DTCs** is displayed and then push **OK**. You will be asked if you want to erase the codes, click **OK**.



2001-2005 GM 6.6L DURAMAX

2001-2005 DURAMAX

2001-2005 GM 6.6L Duramax tunes are configured in DSP-5 format. This configuration requires a DSP-5 switch or an Edge Insight Monitor for power level adjustment.

DSP-5 TUNING INSTALLATION

STEP 1-

Plug the AutoCal directly into the trucks OBD port.

STEP 2-

Turn the key to the run position, do **NOT** start the engine.

STEP 3-

Click **NEXT** until you see **FULL 1 DSP5** displayed on the screen. Click **OK** and follow the prompts on the screen. You will be asked if you want to license the **ECU**, click **OK** and wait for the download to complete. Once the download finishes you will be prompted to turn the key off, do so and then click **OK**. Wait for the countdown to complete, once it does the AutoCal will revert back to the menu and display **FULL 1 DSP5**. You may disconnect the AutoCal and start the vehicle, the tune installation process has been completed.



2001-2005 GM 6.6L DURAMAX

2001-2005 DURAMAX

POWER LEVELS

Switch Position	Power Level Name	HP Rating
#1	NO POWER	+20HP
#2	TOW	+50HP
#3	STREET	+120HP
#4	PERFORMANCE	+175HP
#5	RAMPAGE	+240HP

POWER LEVEL ADJUSTMENT

DSP-5 SWITCH

Refer to DSP-5 installation instructions.

Edge CTS/CS Insight Monitor

Refer to Edge installation instructions

DIANGOSTICS

Your AutoCal will act as a scan tool to read and clear diagnostic trouble codes.

Display DTCs

Plug the AutoCal into the trucks **OBD** port and turn the key to the run position. **Display DTCs** is the first option on the menu, click **OK**. The AutoCal will then display the trouble codes on the screen, if any are present.

Erase DTCs

Plug the AutoCal into the trucks **OBD** port and turn the key to the run position. Click **NEXT** until **Erase DTCs** is displayed and then push **OK**. You will be asked if you want to erase the codes, click **OK**.



2006-2010 GM 6.6L DURAMAX

2006-2010 DURAMAX

2006-2010 6.6L Duramax tunes are configured in DSP-5 format. This configuration requires a DSP-5 switch for power level adjustment.

DSP-5 TUNING INSTALLATION

STEP 1-

Plug the AutoCal directly into the trucks OBD port.

STEP 2-

Turn the key to the run position, do **NOT** start the engine.

STEP 3-

Click **NEXT** until you see **FULL 1 DSP-5** displayed on the screen. Click **OK** and follow the prompts on the screen. You will be asked if you want to license the **ECU**, click **OK** and wait for the download to complete. Once the download finishes you will be prompted to turn the key off, do so and then click **OK**. Wait for the countdown to complete, once it does the AutoCal will revert back to the menu and display **FULL 1 DSP-5**. You may disconnect the AutoCal and start the vehicle, the tune installation process has been completed.



2006-2010 GM 6.6L DURAMAX

2006-2010 DURAMAX

POWER LEVELS

Switch Position	Power Level Name	HP Rating
#1	NO POWER	+20HP
#2	TOW	+50HP
#3	STREET	+120HP
#4	PERFORMANCE	+175HP
#5	RAMPAGE	+260HP

POWER LEVEL ADJUSTMENT

DSP-5 SWITCH

Refer to DSP-5 installation instructions.

DIANGOSTICS

Your AutoCal will act as a scan tool to read and clear diagnostic trouble codes.

Display DTCs

Plug the AutoCal into the trucks **OBD** port and turn the key to the run position. **Display DTCs** is the first option on the menu, click **OK**. The AutoCal will then display the trouble codes on the screen, if any are present.

Erase DTCs

Plug the AutoCal into the trucks **OBD** port and turn the key to the run position. Click **NEXT** until **Erase DTCs** is displayed and then push **OK**. You will be asked if you want to erase the codes, click **OK**.



2011-2016 GM 6.6L DURAMAX

2011-2016 DURAMAX

2011-2016 6.6L Duramax tuning comes as 5 separate files. To change power level you must re-program your vehicle with the AutoCal.

LML DURAMAX TUNE INSTALLATION

YOU MUST INSTALL FULL 1 NO POWER FIRST. DO NOT INSTALL ANY OTHER LEVEL UNTIL YOU HAVE PROGRAMMED THE TRUCK WITH FULL 1 NO POWER. FAILURE TO FOLLOW THESE INSTRUCTIONS WILL RESULT IN A NO START CONDITION

STEP 1-

Plug the AutoCal directly into the trucks OBD port.

STEP 2-

Turn the key to the run position, do **NOT** start the engine.

STEP 3-

Click **NEXT** until you see **FULL 1 NO POWER** displayed on the screen. Click **OK** and follow the prompts on the screen. You will be asked if you want to license the **ECU**, click **OK** and wait for the download to complete. Once the download finishes you will be prompted to turn the key off, do so and then click **OK**. Wait for the countdown to complete, once it does the AutoCal will revert back to the menu and display **FULL 1 NO POWER**. You may disconnect the AutoCal and start the vehicle, the tune installation process has been completed.



2011-2016 GM 6.6L DURAMAX

2011-2016 DURAMAX

POWER LEVELS

Switch Position	Power Level Name	HP Rating
#1	NO POWER	+20HP
#2	TOW	+50HP
#3	STREET	+75HP
#4	PERFORMANCE	+130HP
#5	RAMPAGE	+230HP

Rampage **REQUIRES a lift pump in order to see the full 230 HP increase.*

POWER LEVEL ADJUSTMENT

STEP 1-

Plug the AutoCal directly into the trucks OBD port.

STEP 2-

Turn the key to the run position, do **NOT** start the engine.

STEP 3-

Click **NEXT** until you reach **Prog 1**. Scroll up and down using the **NEXT** and **PREVIOUS** buttons. Click **OK** once you have selected your desired power level and then follow the on screen prompts. Once the download finishes you will be prompted to turn the key off, do so and then click **OK**. Wait for the countdown to complete, once it does the AutoCal will revert back to the menu and display your previous selection. You may disconnect the AutoCal and start the vehicle, the tune installation process has been completed.

DIANGOSTICS

Your AutoCal will act as a scan tool to read and clear diagnostic trouble codes.

Display DTCs

Plug the AutoCal into the trucks **OBD** port and turn the key to the run position. **Display DTCs** is the first option on the menu, click **OK**. The AutoCal will then display the trouble codes on the screen, if any are present.

Erase DTCs

Plug the AutoCal into the trucks **OBD** port and turn the key to the run position. Click **NEXT** until **Erase DTCs** is displayed and then push **OK**. You will be asked if you want to erase the codes, click **OK**.



Notes:

NOTES:



Notes:

NOTES:



TECH SUPPORT

IF YOU REQUIRE ANY TECHNICAL OR INSTALLATION ASSISTANCE, PLEASE CONTACT:

TECH SUPPORT: 1-877-223-5018

EMAIL: tech@gdptuning.com

TECH SUPPORT HOURS: M-F, 8am-5pm (MST)

CUSTOMER SUPPORT

FOR ORDER/PRODUCT INFORMATION AND GENERAL QUESTIONS, PLEASE CONTACT:

CUSTOMER SUPPORT: 1-208-359-9939

EMAIL: support@gdptuning.com

WWW.GDPTUNING.COM



WWW.GDPTUNING.COM