



Installation Instructions

VEHICLE APPLICATION

Year: 2011 - 2016
 Make: CHEVY / GMC
 Model: 2500HD/ 3500
 Engine: 6.6L Duramax LML

TOOLS REQUIRED

- 8mm, 10mm, & 13mm Wrench & Socket
- T-20 Security Torx Wrench (Supplied w/ Kit)
- 7/16" Wrench and Socket
- 5/16" Nut Driver or Flat Blade Screwdriver
- Phillips Screwdriver, Pliers or Channel locks
- Socket Extension

S&B FILTER MAINTENANCE

Cleanable (KF-1062). If the enclosed filter is Red, it came pre-oiled from the factory. Please visit www.sbfilters.com for exact oil amount required after cleaning.

Disposable (KF-1062D). If the enclosed filter is White, it is a disposable filter and should be discarded once it reaches capacity. This filter (does not require oil). For more info on S&B's disposable filter, visit www.sbfilters.com.

NOTES

Kit may not fit with the following Aftermarket Parts installed:

- Body Lift or Lowering Kit
- Custom Hood
- Intercooler or Turbo upgrades

CARB STATUS - EXEMPT

CARB EO# D-590-10

Legal for use in CA or other states adopting CA emissions standards" See Page 3 for more info.

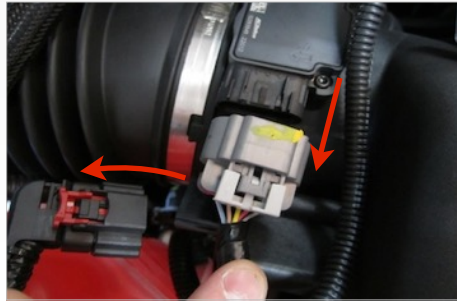
BEFORE YOU START

- Please read the entire product guide before proceeding.
- Ensure all components listed on page 4 are present.
- If you are missing any of the components, call our customer support at (909) 947-0015.
- Do not work on your vehicle while engine is hot.
- Make sure the engine is turned off and the vehicle is in Park or the Parking Brake is set.

1. With the ignition switched off and the parking brake set, disconnect the negative battery cables on both batteries. **Note: Failure to disconnect the battery may cause the CEL to illuminate upon completion of the installation and subsequent operation. Do not skip this step!**



2. Disconnect the electrical connection for the MAF sensor. For 2013-2016 Models, disconnect the electrical connection for the humidity sensor.



3. Loosen the hose clamp at the turbo mouthpiece.



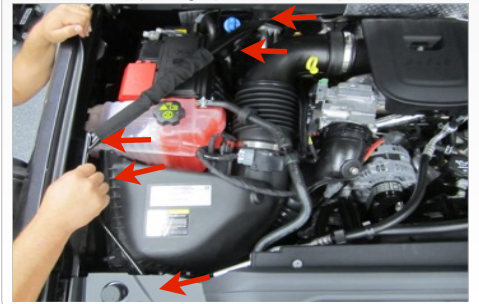
4. For 2015-2016 Models Only. Remove the 4 plastic push pins on the far left side of the front liner to gain access to the front crossbar. To remove the push pins use a flat blade screw driver to pop out the top head and pull out.



5. For 2015-2016 Models Only. Remove the rubber hood seal on the passenger side by pulling forward towards the front of the hood and pulling up.



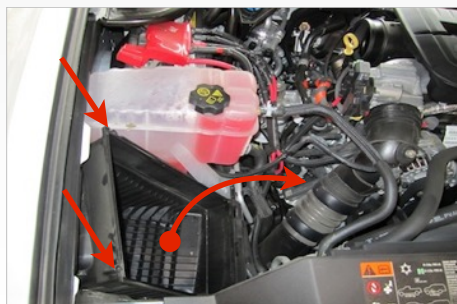
6. For 2015-2016 Models Only. Remove both the upper and lower crossbars by removing the 5 mounting bolts, a 10mm & 13mm socket will be needed. The lower crossbar bolt can be accessed by pulling up on the front plastic liner.



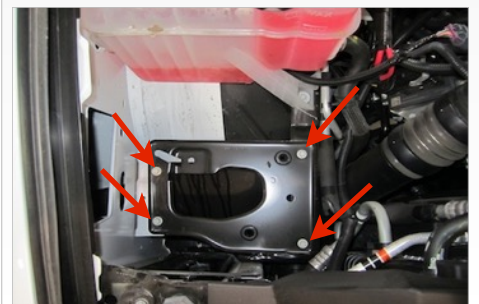
7. Loosen the hose clamp connecting the intake tube to the air box lid. Then remove the intake tube from the truck.



8. Remove air box lid and air filter by removing the two screws by the fender. Then carefully pull the lower portion or the air box up out of the two rubber grommets.



9. Remove the four bolts mounting the air box tray. Remove the mounting tray from the truck. Save all hardware.



SEE EXPLODED VIEW ON PAGE 4

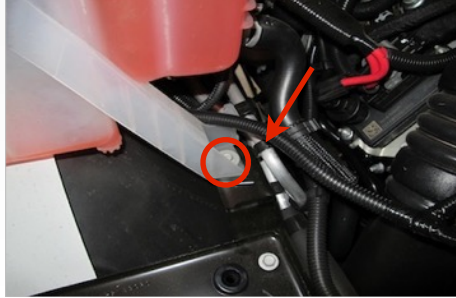


Installation Instructions (continued)

10. Between the battery and the fender; remove the nut mounting the coolant reservoir.



11. Unsnap the plastic clip holding the coolant reservoir to the AC line using a flat blade screwdriver. Then remove the other screw mounting coolant reservoir.



12. Carefully remove the MAF sensor from the stock air box lid and install the MAF sensor onto the Intake Tube #2 (K) with the supplied #8-32 Screws (R) and Plastic Spacers (N). Do not over tighten.



13. For 2011-2012 Models Only. Install the Block Off Plate and Gasket (S & T) onto the Intake Tube #2 (K) with the M4 Screws (O).



14. For 2013-2016 Models Only. Carefully remove the humidity sensor from the stock air box lid and install the humidity sensor onto Intake Tube #2 (K) with the supplied M4 Screws (O). Do not over tighten.



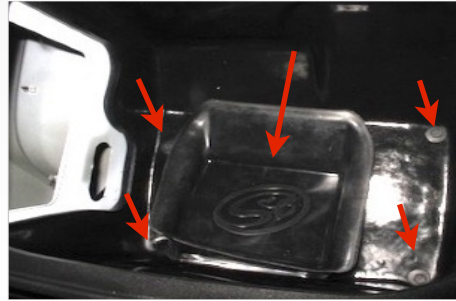
15. Move the coolant reservoir out of the way. Install the Air Box (A) flush onto the bottom of the vehicles mounting points.



16. Reinstall the coolant reservoir and mounting hardware that was removed in Step #10 & 11.



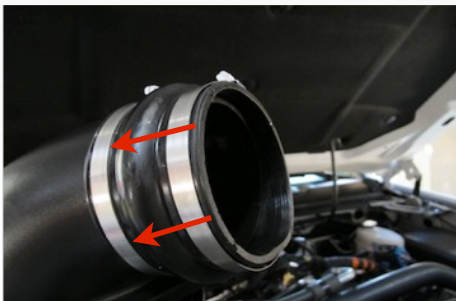
17. Once the Air Box is installed use the four factory bolts to mount it down. Also for those concerned about minimal engine heat; install the provided Box Plug (B) on the bottom of the box. (see page 3 for details). If necessary, use the Bolt (U) and Washer (V) if the factory bolts are too short.



18. Install the Tube Seal (C) onto the air box.



19. Place the two #80 Hose clamps (M) over the Hump Coupler (L) then over Intake Tube #1 (D). Leave the clamps loose for now.



20. Carefully place the Air Filter (E) into the Air Box (A) then slide the air filter onto Intake Tube #1 (D) and rotate the filter so that it points towards the bottom opening of the box. When positioned tighten the #88 Hose Clamp (F). Make sure the filter is not rubbing against the box or touching anything.



21. Place the Silicone Adapter (P) and both #72 Hose Clamps (Q) onto the turbo inlet mouthpiece. Tighten the clamp on the turbo mouthpiece only.



SEE EXPLODED VIEW ON PAGE 4



Installation Instructions (continued)

22. Route the MAF sensor wiring harness as shown then install Intake Tube #2 (K) into the Hump Coupler (L) and Silicone Adapter (P) at the turbo inlet.



23. Make any adjustments to the tube if necessary, when satisfied with the positioning, tighten all hose clamps. Do not over tighten.



24. Reconnect the MAF sensor wiring harness. Reconnect the Humidity sensor wiring harness if applicable.



25. Remove the paper covering from the Clear Lid (G) and install the Lid Seal (H).



26. Install the Clear Lid (G) using the supplied #10-24 Screws (J) and Washers (I). Do not over tighten.



27. Reconnect both batteries and inspect your installation. Make sure the kit is properly positioned and all fasteners are secure. Affix the ID/CARB sticker near the intake kit. **For 2015-2016 Models Only.** Reinstall and bolt down both the upper & lower crossbars and side hood seal. Also re-insert the push pins on the front plastic liner. The installation is now complete.



Air Box End Cap Testing

Stock air boxes are a significant contributor to poor air flow which is why S&B designs custom air boxes with secondary and/or enlarged openings. With that said, S&B recognizes the benefits of cooler air, so we have included a plug to seal off the opening if so desired. For optimal performance, we recommend that the intake be used without the plug except in conditions of extreme heat.

Performance Testing

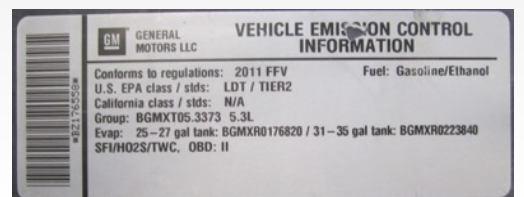
- Engage parking brake and start your engine. Listen for abnormal noises. If an air leak is detected, re-inspect hoses and connections as they may need to be repositioned and tightened.
- S&B FILTERS recommends that you keep your stock intake system in the event it is required in the future.
- In order to maintain your warranty, all connections and components must be checked periodically for alignment and for proper tension on all connections. Failure to do so may void your warranty.
- Use only S&B FILTERS cleaning and oil products to service your filter. Using any other brand oil and or cleaners on your S&B air filter may void your warranty.

Related Items for your Purchase

- Replacement Air Filter (Oiled) (S&B P/N: KF-1062)
- Replacement Air Filter (Dry) (S&B P/N: KF-1062D)
- Filter Wrap (S&B P/N: WF-1062)
- Precision II Filter Cleaning & Oiling Kit (S&B P/N: 88-0008)

Warning!

If your vehicle has a Vehicle Emission Control Information decal affixed to the factory airbox, a new replacement label must be obtained and installed in a readily visible position in the engine compartment in order to remain CARB compliant. Failure to do so will prevent the vehicle from passing a smog check. Replacement labels can be ordered from your local dealership. Regulations state that the VEI label shall not be affixed to any equipment which is easily detached from the vehicle. Label placement, under the hood on a painted surface is recommended.



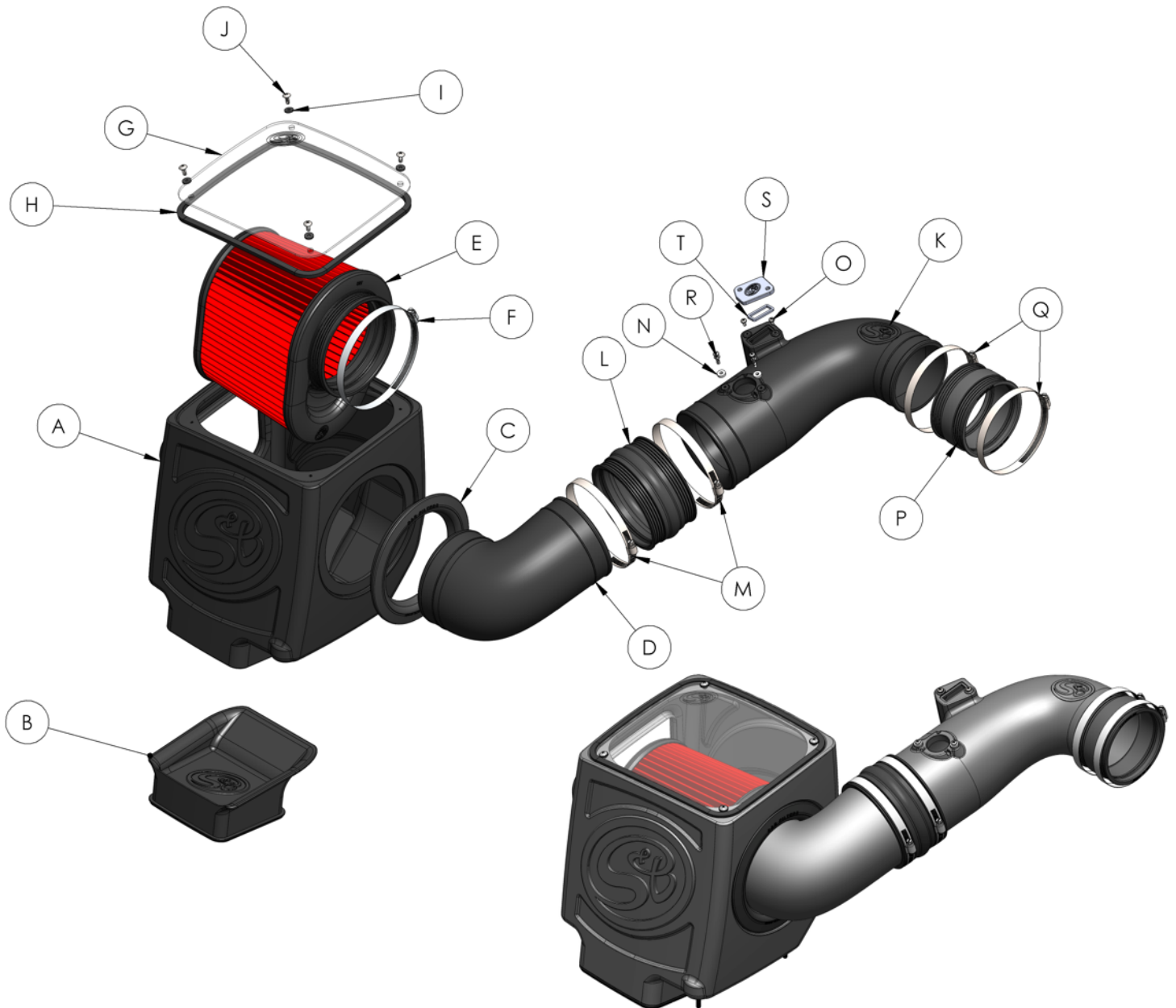
Emissions Standard

The California Air Resource Board (CARB) requires that an E.O. identification label be applied to the vehicle in order to pass a smog check inspection when a Performance Intake Kit has been installed. You must place the E.O. label provided on or near the intake kit after installation so that a smog check technician can easily verify the E.O. number. As of April 2009, S&B has never had a product where CARB denied an exemption request; however, the exemption process with CARB can take as long as 18 months. Check the status of the exemption process by looking up a specific part number at www.sbfilters.com. The CARB Exemption number and/or status is listed under the Product Details section for each part number. If the status shows as "Pending," CARB has yet to issue an exemption but the product has been submitted. Products that have not been issued an EO number are street legal in most states, but may not be used on emission controlled vehicles in the state of California and are for off road use only. If you purchased your kit from S&B Filters directly, we will automatically mail you your Exemption Sticker when it is issued to us. If you purchased your kit from an authorized S&B Filters Dealer, log onto our web site and register to receive your Exemption Sticker.

SEE EXPLODED VIEW ON PAGE 4



Exploded View



ITEM	QTY.	DESCRIPTION	P/N	ITEM	QTY.	DESCRIPTION	P/N
A	1	AIR BOX	AL1235B-00	O	2	SCREW, PAN, M4	AI1360-00
B	1	BOX PLUG	AL1700C-00	P	1	SILICONE ADAPTER	AI1354C-00
C	1	TUBE SEAL	AI1689C-00	Q	2	HOSE CLAMP, #72	AG1009-00
D	1	INTAKE TUBE #1	AL1235-00	R	2	SCREW, PAN, #8-32 x 1/2"	AI1479-00
E	1	AIR FILTER	KF-1062	S	1	MAF BLOCK OFF PLATE	AI1988-00
F	1	HOSE CLAMP, #88	AG1011-00	T	1	MAF BLOCK OFF GASKET	AI1989-00
G	1	CLEAR LID	AI1691-00	ITEMS NOT SHOW IN THE EXPLODED VIEW			
H	1	LID SEAL	AI1636-03	U	2	BOLT, HEX, M6 x 25mm	AI1415-00
I	4	WASHER, SEALING, #10	AI1540-00	V	2	WASHER, FLAT, M6	AI1535-00
J	4	SCREW, TRUSS, #10-24 x 1/2"	AI1539-00				
K	1	INTAKE TUBE #2	AL1199-00				
L	1	HUMP COUPLER	AI1338C-00				
M	2	HOSE CLAMP, #80	AG1010-00				
N	2	WASHER, SPACER	AI1536-00				

AM0212-00 Rev.H.06/26/2017

Warranty

Visit www.sbfilters.com for complete warranty information.