



FILTERS

COLD AIR INTAKE

INSTALLATION INSTRUCTIONS:

P/N: 75-5105 / 75-5105D





FILTERS

BREATHE EASY. YOUR ENGINE & WARRANTY ARE PROTECTED.™

Thank You! for purchasing your new S&B Filters intake kit. If at any time you need additional assistance with installation or have any other questions or comments, feel free to call our customer service department at 909-947-0015. You can also take advantage of our live chat at www.sbfilters.com and connect with an S&B representative immediately. We hope you enjoy your new S&B Filters product and thank you for your continued support. Breathe Easy. Your Engine and Warranty Are Protected.

VEHICLE APPLICATION:

YEAR: 2008-10

MAKE: Ford

MODEL: F-250/F-350

ENGINE: 6.4L Powerstroke

APPROX. INSTALL TIME: 1HRS | 00MIN

TOOLS REQUIRED:

- 8mm Wrench/Socket
- 1/4", 5/16" Nut Driver or Flat Blade Screwdriver
- T20 Torx
- Phillips Screwdriver

NOTES:

Kit may not fit with the following Aftermarket Parts installed:

- Body Lift or Lowering Kit
- Custom Hood
- Throttle Body Spacer/ Upgrade

CARB STATUS - EXEMPT

Product will be submitted to Air Resources Board for approval shortly.

*Not Legal for use in CA or other states adopting CA emissions standards"
See Page 2 for more info.*

S&B FILTER MAINTENANCE:

- Cleanable (KF-1051). If the enclosed filter is Red, it came preoiled from the factory. Please visit www.sbfilters.com for exact oil amount required after cleaning.
- Disposable (KF-1051D). If the enclosed filter is White, it is a disposable filter and should be discarded once it reaches capacity. This filter **does not require oil**. For more info on S&B's disposable filter, visit www.sbfilters.com.

BEFORE YOU START

- Please read the entire product guide before proceeding.
- Ensure all components listed on pages 3 & 4 are present.
- If you are missing any of the components, call our customer support at (909) 947-0015.
- Do not work on your vehicle while engine is hot.
- Make sure the engine is turned off and the vehicle is in Park or the Parking Brake is set.

RELATED ITEMS FOR YOUR PURCHASE

Order Online today at www.sbfilters.com or through your local S&B distributor.



Filter Wrap
SKU# WF-1031



Replacement Cotton Filter
SKU# KF-1051



Replacement Dry Filter
SKU# KF-1051D



**Precision II:
Cleaning & Oil Kit**
SKU# 88-0008

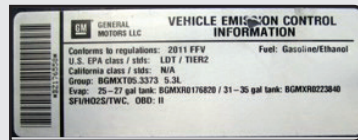
Air Box Plug Testing

Stock air boxes are a significant contributor to poor air flow which is why S&B designs custom air boxes with secondary and/or enlarged openings. With that said, S&B recognizes the benefits of cooler air, so we have included a plug to seal off the opening if so desired. For optimal performance, we recommend that the intake be used without the end cap except in conditions of extreme heat.

Performance Testing

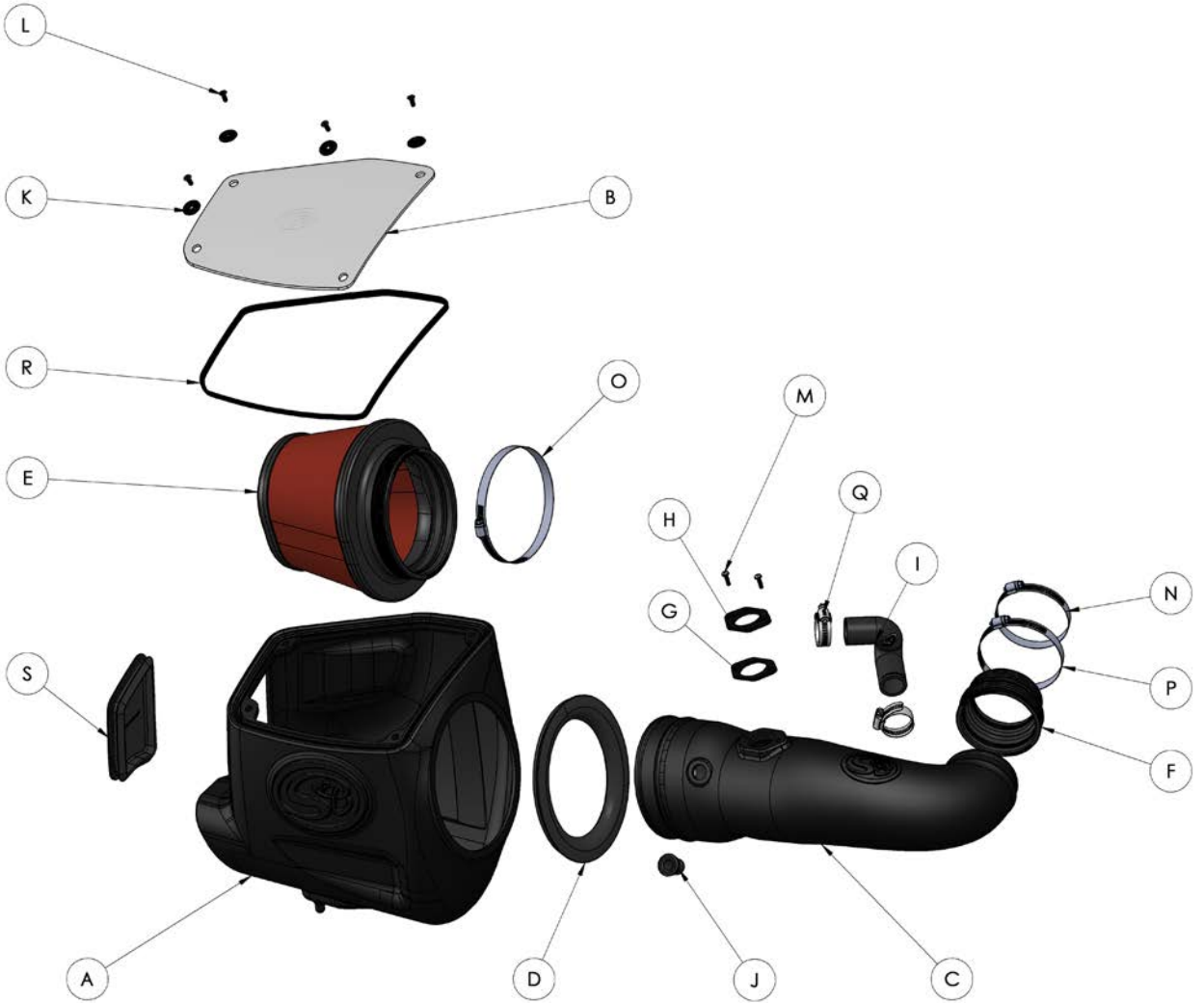
- After your installation is complete engage parking brake and start your engine. Listen for abnormal noises. If an air leak is detected, re-inspect hoses and connections as they may need to be repositioned and tightened.
- S&B FILTERS recommends that you keep your OE intake system in the event it is required in the future.
- In order to maintain your warranty, all connections and components must be checked periodically for alignment and for proper tension on all connections. Failure to do so may void your warranty.
- Use only S&B FILTERS cleaning and oil products to service your filter. Using any other brand oil and/or cleaners on your S&B air filter may void your warranty.

Warning! If your vehicle has a Vehicle Emission Control Information decal affixed to the factory airbox, a new replacement label must be obtained and installed in a readily visible position in the engine compartment in order to remain CARB compliant. Failure to do so will prevent the vehicle from passing a smog check. Replacement labels can be ordered from your local dealership. Regulations state that the VECL label shall not be affixed to any equipment which is easily detached from the vehicle. Label placement, under the hood on a painted surface is recommended.



Emissions Standard The California Air Resource Board (CARB) requires that an E.O. Identification label be applied to the vehicle in order to pass a smog check inspection when a Performance Intake Kit has been installed. You must place the E.O. Label provided on or near the intake kit after installation so that a smog check technician can easily verify the E.O. Number. The exemption process with CARB can take as long as 18 months. Check the status of the exemption process by looking up a specific part number at www.sbfilters.com. The CARB Exemption number and/or status is listed under the Product Details section for each part number. If the status shows as "Pending," CARB has yet to issue an exemption but the product has been submitted. Products that have not been issued an E.O. number are street legal in most states, but may not be used on emission controlled vehicles in the state of California and are for off road use only. If you purchased your kit from S&B Filters directly, we will automatically mail you your Exemption Sticker when it is issued to us. If you purchased your kit from an authorized S&B Filters Dealer, log onto our web site and register to receive your Exemption Sticker.

EXPLODED VIEW:



PARTS LIST: 75-5105/75-5105D

ITEM	QTY	DESCRIPTION	PART NUMBER
A	1	AIR BOX	AL1303B-00
B	1	CLEAR LID	AI11974-00
C	1	INTAKE TUBE	AL1303-00
D	1	TUBE SEAL	AI1972C-00
E	1	AIR FILTER	KF-1051
F	1	COUPLER	AI1316C-00
G	1	MAF GASKET	AI1345-00
H	1	MAF PLATE	AI1973-00
I	1	VENT HOSE	AI1990-00
J	1	FILTER MINDER GROMMET	AI1814-00
K	4	LID WASHER	AI2006-00
L	4	SCREW, FLAT, #10-24 X 1/2"	AI2005-00
M	2	SCREW, 8-32	AI1252-00
N	1	HOSE CLAMP, #52	AG1007-00
O	1	HOSE CLAMP, #88	AG1011-00
P	1	HOSE CLAMP, #56	AG1019-00
Q	2	HOSE CLAMP, #16	AG1001-00
R	1	LID SEAL	AI1766-01
S	1	BOX PLUG	AI1971C-00

AM0338-010 REV-A 07/07/2017

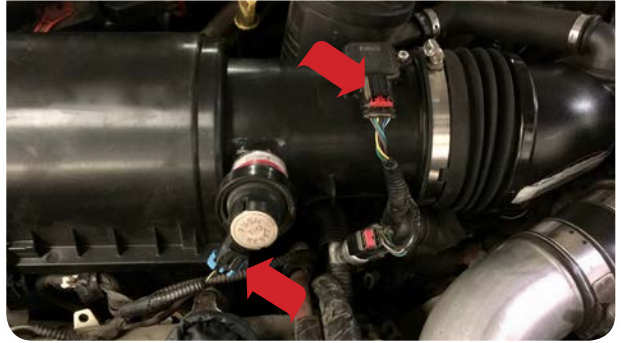
HARDWARE PACKS
HP1475-00
AG1007-00
AG1019-00
HP1477-00
AI1252-00
AI1973-00
AI1345-00
HP1474-00
AI2005-00
AI2006-00
AI1990-00
AG1001-00
AI1814-00
HP1476-00
AI1974-00
AI1766-01

INSTALLATION STEPS:

- 1** With the ignition switched off and the parking brake set, disconnect the negative battery cable on both batteries. **Note: Failure to disconnect the battery may cause the CEL to illuminate upon completion of the installation and subsequent operation. Do not skip this step!**
Tool Required: 8mm Socket/Wrench.



- 2** Disengage the red locking clip, press down on the tab, then pull out to disconnect the MAF sensor harness from the MAF sensor. Disconnect the filter minder electrical harness.



- 3** Loosen the hose clamp at the turbo inlet. Use a flat blade screwdriver to pry open the hose clamp securing the crankcase vent hose to the intake tube.
Tool Required: Flat Blade Screwdriver



- 4** Disconnect the hose clip securing the secondary air inlet.



- 5** Lift the stock intake box to unseat the prongs from the grommets and remove both the intake assembly and secondary air inlet from the vehicle.



- 6** Double check to make sure the grommets are still on the truck after removing the stock intake box.



7 Install the Tube Seal (D) onto the Air Box (A).



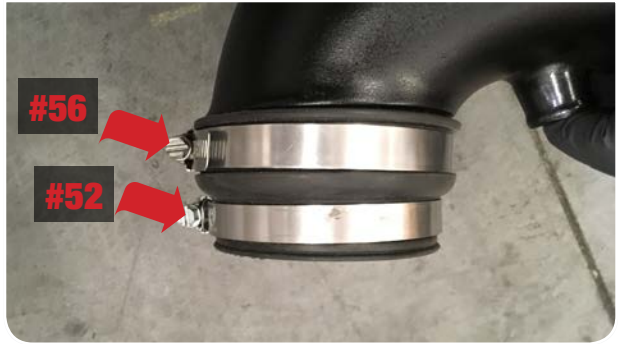
8 Determine if you want to install the Box Plug (S) onto the Air Box (A) or leave it open. See the "Air Box Plug" note on Page 2 for more information. If the Box Plug is desired, simply press the Box Plug into the box opening until it snaps into place.



9 Carefully remove the MAF sensor from the stock intake tube then install the sensor onto the Intake Tube (C) with the 8-32 Screws (M), MAF Plate (H) and MAF Gasket (G). Install the Filter Minder Grommet (J) into the intake tube.
Tool Required: T20 Torx, Screwdriver



10 Slide the Coupler (F) and #56 and #52 Hose Clamps (P & N) onto the Intake Tube (C). Make sure the coupler is seated up to the stop bead. Tighten the #56 hose clamp only, leave the #52 hose clamp loose.
Tool Required: 5/16" Nut Driver or Flat Blade Screw Driver.



11 Install the Intake Tube (C) into the Air Box (A) then install the intake assembly into the truck. Align the fender side opening of the airbox with the inlet, then rock the airbox downward. Push down on the box to make sure that the air box is completely seated on the grommets then slide the coupler onto the turbo inlet.



INSTALLATION STEPS:

- 12** Insert the Vent Hose (I) with the two #16 Hose Clamps (Q) into the oil canister and Intake Tube (C). Tighten all hose clamps.
Tool Required: 1/4", 5/16" Nut Driver or Flat Blade Screw Driver..



- 13** Install the Air Filter (E) onto the Intake Tube (C) and tighten the #88 Hose Clamp (O).
Tool Required: 5/16" Nut Driver or Flat Blade Screw Driver..



- 14** Press the Lid Seal (R) into the groove on top of the Air Box (A).



- 15** Remove the protective covering on the Clear Lid (B).



- 16** Place the Clear Lid (B) on top of the Air Box (A) and secure with the 10-24 Screws (L) and Lid Washers (K).
Tool Required: Screwdriver



- 17** Remove the filter minder from the stock intake box and insert it into the Intake Tube (C).



18 Reconnect the MAF sensor harness into the MAF sensor and engage the red locking clip. Reconnect the sensor harness into the filter minder.



19 Reconnect the negative terminal on both batteries. Inspect your installation, make sure the kit is properly positioned and all fasteners are secure. Keep all stock parts in case you would ever need to reinstall the stock intake assembly. Affix the ID label near the intake kit. The installation is now complete.

Tool Required: Flat Blade Screwdriver



INSTALLATION NOTES:

INSTALLATION NOTES:

