

GT PLATINUM DIESEL



Not legal for sale or use in California on pollution-controlled vehicles.



**BULLY
DOG**
powered by **DERIVE**

CONTENTS



About the GT 2-16

- Preview of Basic Installation Steps 2
- California Emissions Regulations..... 2
- Tuning Information 2
- Vehicle Applications..... 3
- Parts List 4
- Parts Description 5-6
- Button Navigation 7
- The Main Screen..... 8
- Available Options – All Models 9-16
 - Change Vehicle 9
 - Install Download 9
 - Gauge Setup 9-10
 - Performance Testing..... 11
 - DPF Burn-Off..... 11
 - Special Functions 11
 - Diagnostics 11
 - Driving Coach Setup..... 12-14
 - Vehicle Setup..... 15
 - User Options..... 16
 - Show Settings 16
 - Uninstall Download 16
 - Update Firmware..... 16
- Special Functions..... 17**

- Vehicle Specific Download Features..... 18**
 - Speed Limiter 18
 - Calibrate Speedometer 18
 - Low End Power 18
- Important Warranty Information 19**
- Updating the GT 20-27**
 - Overview 20
 - FAQs about Updating 20
 - Basic Steps to Update (Short Version) 21
 - What You Need to Update the GT 21
 - Updating (Detailed Steps for Windows) 22-25
 - Troubleshooting Updating Problems..... 26
 - Updating (Detailed Steps for Apple) 27
- Physical Installation 28-31**
 - Brief Preview 28
 - Detailed Instructions..... 29-30
 - Using the Universal Windshield Mount 30
 - Additional GT Mounting Options..... 31
- Installing the Tune 32-37**
 - Important Preparation Steps..... 32-35
 - How to Install the Tune 36
 - Troubleshooting Installation Problems 37
- Uninstalling - Returning to Stock 38-40**
 - What does this mean? 38
 - When to Return to Stock 38
 - How to Return to Stock 39
 - What if I Don't Return to Stock? 40
 - How Do I Know if the GT is (Still) Installed?..... 40
- More Information 41-53**
 - Pyrometer Calibration 41
 - Reset Fee 41
 - Performance Testing Software 41
 - Windows Update 42-48
 - Contacting Technical Support..... 49
 - USB Mode 49
 - Transmission Relearn Process..... 50
 - FAQs/Troubleshooting..... 51-53

ABOUT THE GT

Preview of Basic Installation Steps

1. Update the GT. **This step is very important!!!** See page 20 for more information.
2. Physically install the GT. See page 28 for more information.
3. Install the tune to your vehicle. See page 32 for more information.

IMPORTANT NOTE: You **MUST** uninstall your Bully Dog engine tune before taking your vehicle in for ANY type of service. There are also other important times to uninstall the tune. Please see page 38 for more information.

See pages 4-6 for a complete list and description of the items included with your GT.

California Emissions Regulations

Due to emissions regulations in California we offer a 50 state legal product that is legal for use in California. The 50 state legal GT Diesel is part number 40425. If your vehicle is registered in the state of California you must use our 50 state legal GT Diesel on your vehicle. The 49 state legal GT Diesel, part number 40420, is not legal for use on vehicles that are emissions regulated and registered in the state of California. Installing a 49 state legal GT diesel on a vehicle registered in California can result in certain state penalties imposed by the state of California. The executive order (EO) is issued by the California ARB to signify that our vehicle tunes have been emissions tested and are legal for on road use. To discover Bully Dog applications that have an EO number, visit our website at www.bullydog.com/carb_info.php. If your vehicle has received an EO number the EO label should be in this package. If there is no EO label for you vehicle application and it has been indicated as legal then please contact Bully Dog Tech Support. See page 49 for more information about contacting technical support.

Tuning Information

The results we have provided are typical – variations do occur between vehicles. Some vehicles do not have the extreme power level setting available or On-The-Fly horsepower adjustability.

SETTING	PEAK HORSEPOWER	PEAK TORQUE
Extreme	Up to 120+	Up to 250+
Performance	75+	125+
Tow/Economy	50+	100+
Stock Power	Stock	Stock



VEHICLE APPLICATIONS

This vehicle application list is current for GT software version 1.13.8. Check the GT product page at www.bullydog.com to check for new applications.

CHEVROLET/GMC
EXPRESS/SAVANA
6.6L 2006-2015
KODIAK/TOPKICK
6.6L 2006-2010
SIERRA/SILVERADO
6.6L 2001-2015

DODGE
RAM 2500-3500
5.9L 2003-2007
6.7L 2007-2015
RAM 4500-5500
5.9L 2003-2007
6.7L 2007-2015

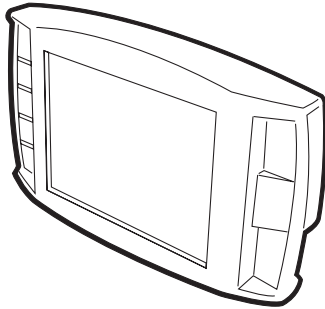
FORD
EXCURSION
6.0L 2003-2006
7.3L 1999-2003
F-250-550
6.0L 2003-2007
6.4L 2008-2010
6.7L 2011-2015 *
<i>*No '13-'15 cab & chassis</i>
7.3L 1999-2003

PARTS LIST

Your GT package should include the following items:

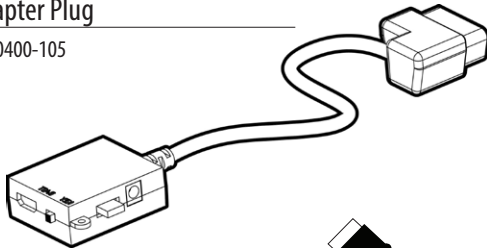
1. The GT Head Unit

Part Number: 40420-1



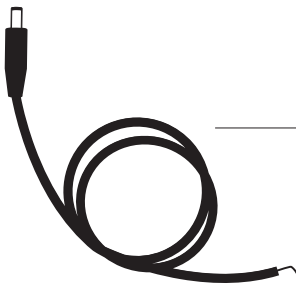
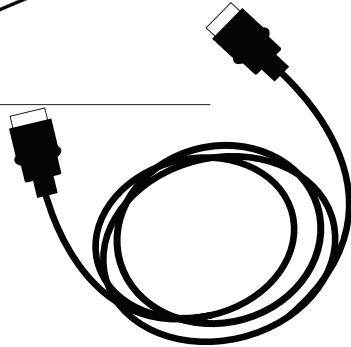
2. OBDII Adapter Plug

Part Number: 40400-105



3. HDMI Cable

Part Number: 40400-100

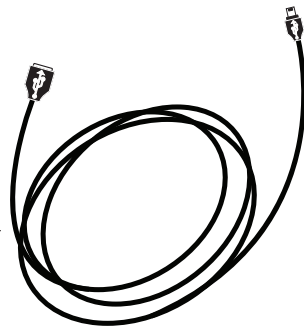


4. Mini USB

Part Number: 40400-103

4. Power Wire

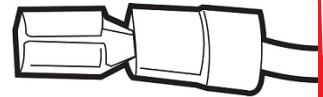
Part Number: 40400-101



5. Fuse Tap



6. Fuse Spade



7. Micro SD Card

Part Number: 40410-10



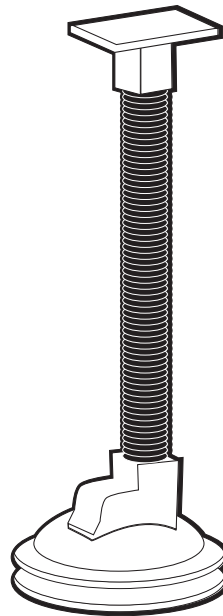
8. Micro SD Card Reader

Part Number: 40410-10



8. Windshield Mount

Part Number: 40400-102



You may also want to have the items listed below available when you are installing the GT:

Tools Needed

- Fuse Puller
- Voltage Meter (optional)

Extra Parts (Optional)

- Battery Charger or Jumper Cables
- Alternative Mounting Solution (See page 31 for more information.)

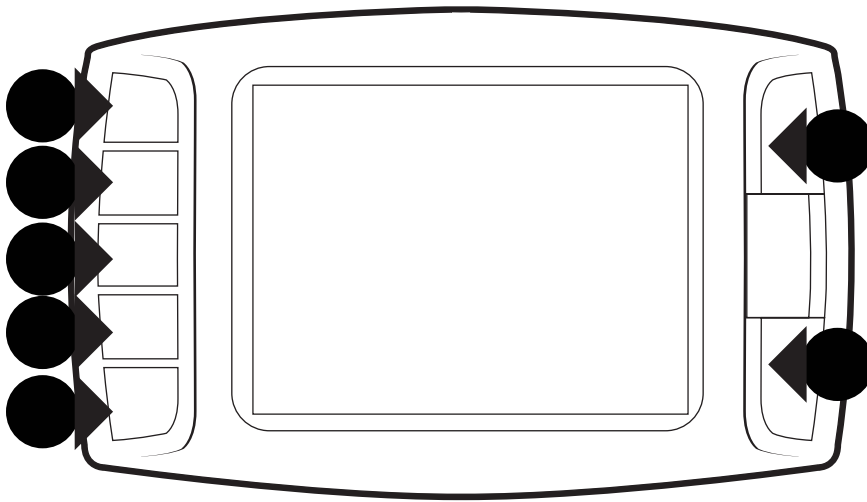


**BULLY
DOG**
powered by DERIVE

PARTS DESCRIPTION

The GT Head Unit

The main component of the Gauge Tuner is the head unit. It has the screen and the buttons that allow you to access all of the functions and features of the tuner.

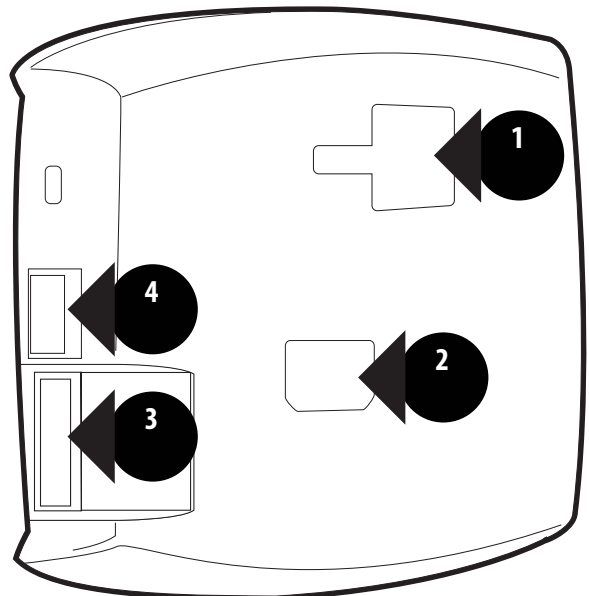


GT Front Side:

The GT has seven capacitive touch buttons. Capacitive touch is a button style that is sensitive to the presence of your finger. Capacitive buttons do not need to be pushed, only touched to activate. The front of the GT head unit features a 2.4" LCD screen.

GT Back Side:

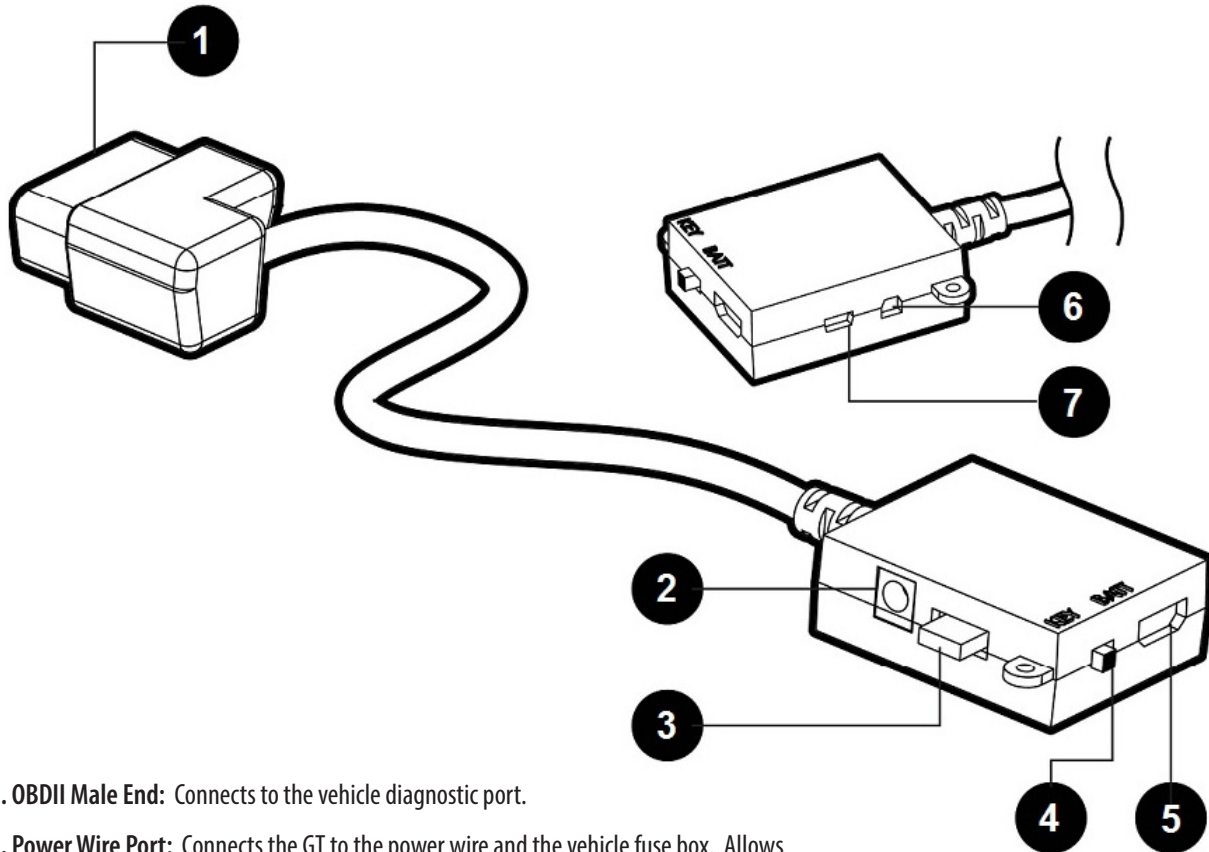
1. T-Slot Mount Socket, which allows you to use the GT with different mounting options.
2. HDMI port
3. Micro SD card port
4. Mini-USB port



PARTS DESCRIPTION

The OBDII Adapter Plug

The GT assembly connects to your vehicle through the diagnostic port, which is located under the dash on the driver's side. The OBDII Adapter Plug connects to the diagnostic port on your vehicle and has a connection for the HDMI cable that plugs into the back of the GT Head Unit. The illustration and numbered list below contain more information about the other parts of this important piece of the GT assembly.



1. **OBDII Male End:** Connects to the vehicle diagnostic port.
2. **Power Wire Port:** Connects the GT to the power wire and the vehicle fuse box. Allows the GT to turn on and off with the key.
3. **Fuse:** The adapter plug fuse protects the GT from being damaged by unexpected power surges.
4. **Power Switch:** Changes the active power source of the GT.
The two options are: 1) KEY: this pulls energy from the fuse box through the power wire and allows the GT to automatically turn on and off based on the vehicle's ignition key position; and 2) BATT: This provides continuous battery power to the GT directly through the vehicle's diagnostic port.
5. **HDMI Port:** Connects the OBDII adapter plug to the GT Head Unit.
6. **Pyrometer/Sensor Docking Station Port:** Connects the GT to optional sensors including pyrometers or the Bully Dog Sensor Docking Station.
7. **Future Peripherals:** Not currently in use – may be used to connect additional devices in the future



**BULLY
DOG**
powered by DERIVE

BUTTON NAVIGATION

FUNCTION 1: Press the top left button to enter the Main Menu, also use this button to exit menus.



FUNCTION 2: Press any of the four buttons on the left side of the GT adjacent to one of the vehicle parameters on the screen will display that parameter in the large gauge area.

FUNCTION 4: Only for On-the-Fly Vehicles
Power Level Up
Power Level Down
Use the power level buttons to control power levels on-the-fly only while in the main screen.

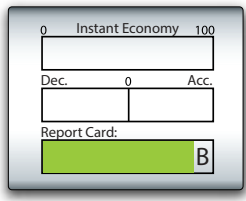
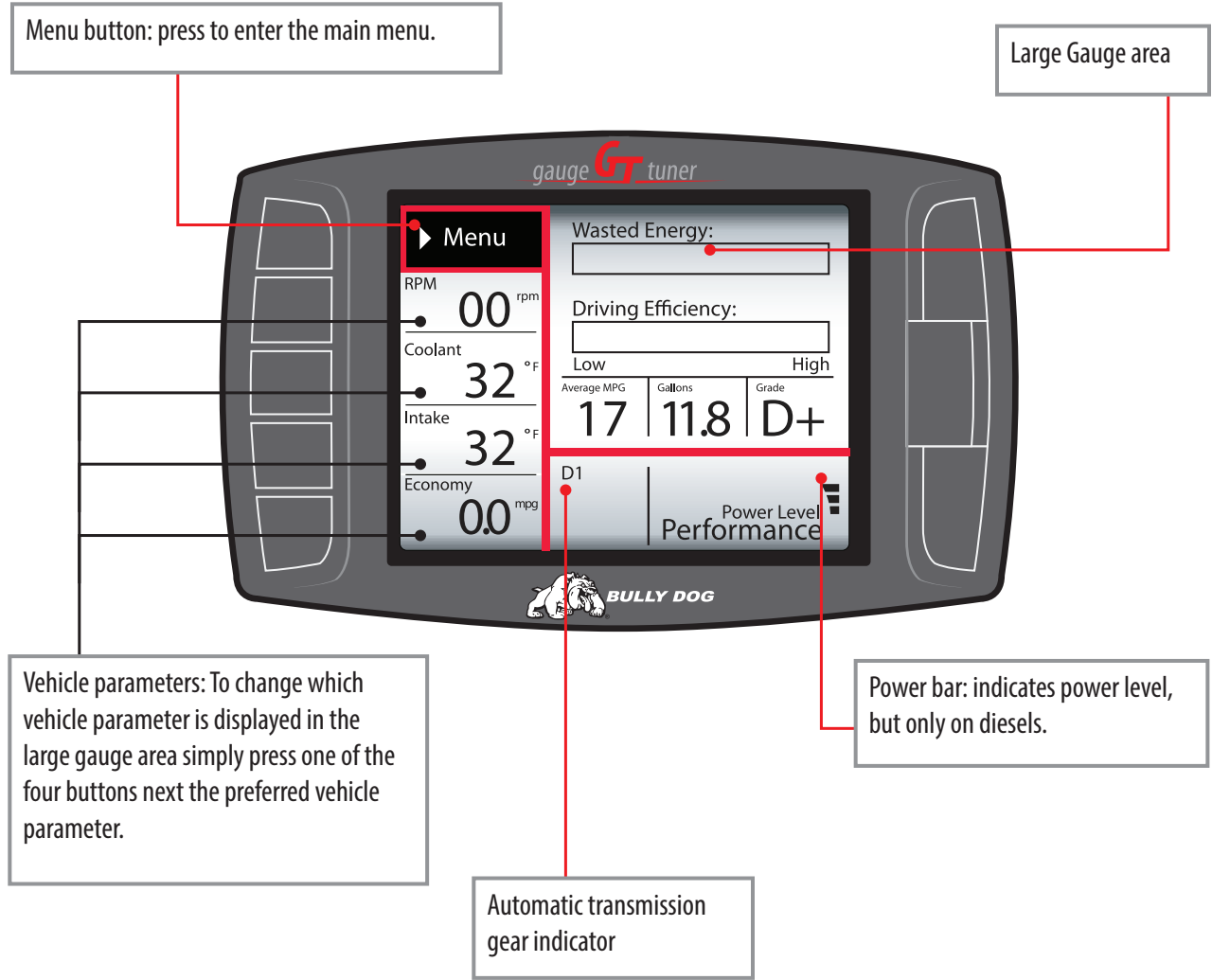
FUNCTION 3: Continuously hold any of the four buttons to change the Large Gauge style, there are four different styles that pop up.

FUNCTION 5: Use these buttons to scroll up and down when GT is in a menu screen.

NOTE: The GT buttons are Capacitive Touch. This means that a light touch is all that is needed to choose different options. You do not need to push hard or get the buttons to move down or in for the GT to work for you.

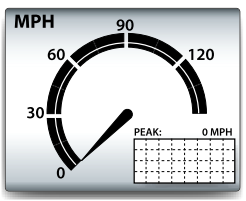
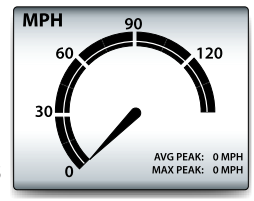
THE MAIN SCREEN

This picture of the GT main screen has the Driving Coach selected for the Large Gauge option. You can change which gauge is featured in the upper right corner of the main screen by holding down one of the buttons on the left side of the GT until the gauge type that you want is shown.



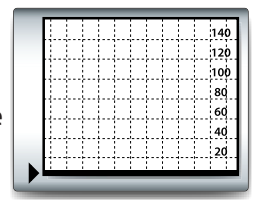
1.
The Driving Coach

2.
Analog gauge with average and max peaks



3.
Analog gauge with mini graph

4.
Large real time graph



See page 9 for more information about changing the information shown on the main gauge screen.



AVAILABLE OPTIONS – ALL MODELS

These options are presented in the order they appear on the Main Menu. If options are missing in your Main Menu, you should update your GT. See pages 20-27 for more information on updating your GT.

Change Vehicle

This option allows you to choose the type of vehicle that the GT will be used with. If the tune has already been installed, the Change Vehicle option cannot be used. Pages 38-40 have more information about how to uninstall the tune and how to check to see if the tune has been successfully removed.

Install Download

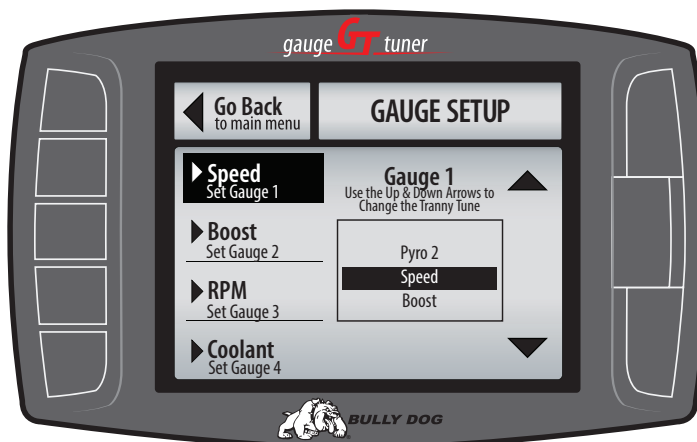
This option allows you to install the tune to the engine computer in your vehicle. If the tune is already installed, this option will allow you to change certain settings that can only be changed by writing a new tune to the engine computer. Pages 18 and 38 have more information about the download options and returning to stock.

Gauge Setup

This option will allow you to change which gauges are being displayed on the main gauge screen. Definitions for each type of gauge option available are listed on the next page.

Changing the Information on the General Display

1. Choose Gauge Setup from the Main Menu.
2. Press the button on the left side of the GT to highlight the gauge slot you would like to change.



3. Use the buttons on the right side of the GT to scroll through the different functions and highlight the one you want shown on the General Display.
4. When you are done, use the top left button to go back to the Main Menu and General Display.

NOTE: All of the gauge types may not be available through your vehicle's diagnostic port (OBDII port). This fact is out of the control of Bully Dog; however, Bully Dog offers a range of add-on automotive sensors and sensor interface equipment. Contact Bully Dog or a Bully Dog dealer to learn more.

Gauge Setup (continued)

Pyro 1 & 2

Both pyro 1 and pyro 2 measure exhaust gas temperature. The only difference between them is the location of the temperature sensor. These temperature readings are used for defuel and warning level settings, which can help protect your engine from heat damage. The availability and location of factory installed pyrometers vary according to vehicle make and year. All '07.5 and newer diesel pickups that are equipped with OEM diesel particulate filters also include factory installed pyrometer sensors. For all other vehicles, pyrometer kits are available for purchase from www.BullyDog.com.

Speed

This option shows the current vehicle speed. Monitoring this information can help you ensure that the speed displayed on the GT and the vehicle speedometer match the actual vehicle speed. Other important numbers, like the odometer and fuel efficiency, are based on this information. If the speed is displayed incorrectly on the GT, it can easily be corrected. See page 13 for more information.

Boost

This option shows the turbo boost pressure.

RPM

This option shows the number of revolutions per minute of the engine. This will help you protect your vehicle and improve performance by watching and ensuring that the RPMs stay within the optimal operating range for your engine.

Coolant

This option shows the coolant temperature. The temperature information is used in defuel and warning level settings to help prevent damage to the engine.

Throttle

This option shows the throttle position measurement – it is displayed as the percent open. The throttle position information is used by the Driving Coach to indicate where changes can be made to driving habits to maximize fuel efficiency.

Intake

This option shows the intake air temperature. Air temperature affects combustion temperature and engine performance. Adding a Bully Dog Rapid Flow Intake (RFI) closed air system will lower this temperature, improve performance, and increase horsepower. The Gauge Tuner (GT) is designed to work with the RFI to get the most out of your engine.

ICP

This option shows the injection control pressure (ICP). The ICP affects correct fuel injection, and this information is used by the engine computer to adjust other settings like fuel flow to achieve optimum engine performance and increase horsepower.

Trans Temp

This option shows the transmission temperature. The transmission temperature is used in defuel and warning level settings to help prevent damage to the transmission.

MAF

This option displays information from the Mass Airflow Sensor. It is used by the Engine Control Module (ECM), aka: the engine computer, to determine how much air is going into the engine. The ECM then sends the correct amount of fuel for optimum engine performance.

Fuel Econ.

This option displays a real-time measurement of the vehicle's fuel economy, shown in miles per gallon. This information will help you to determine when your fuel efficiency peaks or dies to improve your driving habits and your bottom line when visiting the pump.

Fuel Flow

This option displays the amount of fuel being used at any given time; it is shown in gallons per hour.

The following gauge options are provided to allow the GT to monitor additional sensors that are only available with the Bully Dog Sensor Docking Station.

A/F Ratio 1 & 2

This gauge option shows the ratio of air to fuel. The GT will use this information to ensure that your engine is using the correct ratio to completely burn all of the fuel being used and maximize performance and efficiency.

Only available on Bully Dog Sensor Docking Station part number 40385.

AUX 1, 2 & 3

This gauge option shows the information from sensors connected to the **0-5V** auxiliary inputs on the Bully Dog Sensor Docking Station.

AUX Temp

This gauge option shows the information returned to the Sensor Docking Station by an optional temperature sensor. The port for this sensor is marked as **5V out**.

Frequency

This gauge option shows the information from a pulsing type of sensor, like an on-board speed sensor or another optional sensor that operates on the 0-5kHz 5V pulse range. The port on the Bully Dog Sensor Docking Station for this gauge option is marked as **FN**.



**BULLY
DOG**
powered by DERIVE

Performance Testing

This feature offers drag racers the ability to complete the 1/4 Mile and 0-100 KPH performance tests.

You can also download saved tests from your GT to your computer and analyze it using the Bully Dog Performance Testing Software. The software is available by free download from www.bullydog.com. See page 41 for more information about the Performance Testing Software.

SPECIAL NOTE: Street racing is illegal and extremely unsafe. The performance testing feature should only be used on a sanctioned 1/4 mile drag racing track.

There are two different styles available for both tests. The GT will show different test screens based on the style of test that is currently selected in the Performance Testing Setup Menu.

Speed Sensitive Performance Test

Once this test is begun, the GT will show instructions to the user to first bring the vehicle to a stop. Once the vehicle is at zero miles per hour, the test is ready. The test will automatically start once the vehicle begins to move.

Race Tree Performance Test

Before initiating the Race Tree style performance test it is important that the vehicle should already be at a complete stop. Once the test is begun, the GT will display a classic race tree on the screen. As soon as the lights on the tree turn green, the GT will begin to record the vehicle's time. In this style of test, the GT will not wait for the vehicle to start moving before it starts recording performance data.

1/4 Mile Performance Test

This option will test the vehicle's performance until the vehicle has traveled 1/4 mile.

- View Test Results

View the results for the last performance test that was run.

- Save Previous Test to SD Card

Save the results of the last run to the SD card in the GT. All runs that are saved to the SD Card can be transferred to your computer using our Performance Testing Analysis Software. For more information on our Performance Testing Analysis software, see page 41 or visit our website: www.bullydog.com

- Fastest Times

View the results for the quickest 1/4 mile ever recorded.

0-100 KPH Test.

This option will test the vehicle's performance until the vehicle has reached a speed of 100 kilometers per hour, which is about the same speed as 62 miles per hour.

DPF Burn-Off

Also known as Mobile Desoot, this option is not available for all vehicles. See page 17 for more information about this special function.

Special Functions

These options vary from vehicle to vehicle. See page 17 for more information.

Diagnostics

This option reads the Diagnostic Trouble Codes (DTCs) from your vehicle engine. You can also erase these codes from here.

To look up the DTC codes, the following website is very helpful: <http://engine-codes.com/>

You can also search for more information about DTC codes online using your favorite search engine.

IMPORTANT NOTE: Most DTCs indicate a problem with the engine, not with the tune or the tuner itself. If you want to know if a DTC is being caused by the GT or not, uninstall the tune and drive your vehicle for about one week. If the DTC comes back, there is a problem with the vehicle and you should take it to a trusted mechanic. If the DTC doesn't come back, reinstall the tune and test drive for another week – if the DTC comes back while the tune is reinstalled, contact technical support. Be sure to have your tuner, vehicle, and a computer with internet access available when contacting technical support. See page 49 for more information about contacting technical support.

Driving Coach Setup

The Driving Coach is a special feature designed to be your fuel economy dashboard and information center. It provides real-time visual and audio feedback about driving efficiency and where energy is being lost. The driving coach will help you understand the optimal conditions for your particular vehicle through real-time observation, giving you the power to maximize your vehicle's fuel economy.

Two hidden bonuses of driving more efficiently are: saving money on fuel and helping the environment!

Before the Driving Coach can give you accurate information, it is important to make sure that the GT is showing the correct speed. In the sections below, you will find specific instructions for using the Driving Coach to become the best driver you can be.

Set Economy Goal

This option will allow you to select a fuel economy goal. The Driving Coach will use the economy goal to calculate your driving grade.

It is very important to select an economy goal that is realistic for both your vehicle and the kind of driving you will be doing. If you will be driving mainly in the city or on the highway, choose a goal that is very close to the advertised fuel efficiency for your vehicle in that type of environment. If you will be doing a mixture, choose an economy goal between the advertised city and highway mileage for your car.

Reset Average Economy

This option will clear the values stored in the GT for the average fuel economy, the number of gallons used, and the grade in the Driving Coach.

Adjust Acceleration

This option will allow you to select the GT sensitivity for the acceleration and deceleration for your vehicle.

Coach Sound Setup

This option will allow you to turn the Driving Coach sounds on or off.

Showing/Hiding the Driving Coach

The driving coach is always running, even if you choose not to have the information displayed. You can show or hide the driving coach on the Main Display by holding one of the four bottom left buttons until the display cycles through to the gauge style that you want.



Driving Coach Setup *(continued)*

Checking Speedometer Accuracy

First: Change the Gauge Setup to have the Speed displayed on the main display screen. See page 9 for more information about changing the information displayed on the main display screen.

Next: Go to a safe place with little to no traffic where you can perform a speed test. Make sure the speed limit is at least 60 mph. Here are two different ways to find out your vehicle's actual speed:

Method 1: GPS

1. Use a GPS device to compare your actual speed and the speed displayed on the Bully Dog.
2. Calculate the Percent Difference by using this formula:

$$\text{Percent difference} = \frac{\text{GT speed} - \text{GPS Speed}}{\text{GPS Speed}}$$

Example 1: A GPS device reads 65 mph and the GT reads 62 mph for one single moment.

$$\text{Step 1. Percent difference} = \frac{62 - 65}{65}$$

$$\text{Step 2. Percent difference} = \frac{-3}{65}$$

Step 3. Percent difference = .046 or 4.6% then round up 5%

Method 2: Stopwatch

1. Use a Stop Watch to measure how long it takes to travel one mile while traveling at 60 mph according to the GT.

Accelerate up to a speed of 60 mph (as shown on the GT)

While traveling at that constant speed, record the amount of time in seconds that it takes to travel exactly one mile.

*Use highway mile markers to ensure that your one mile measurement is correct.

2. Record the time.

3. Calculate the Percent Difference.

If it takes 60 seconds to travel one mile at 60 mph, then the GT is accurately reading your vehicle speed.

If it takes 2 seconds more or less than 60 seconds to travel one mile, then use the formula to the right to calculate the Percent Difference.

Once you have calculated the Percent Difference, you can use that information to adjust the speed display as described below

To calculate the percent difference use this formula:

$$\text{Percent difference} = \frac{\text{Recorded Time} - 60 \text{ seconds}}{60 \text{ seconds}}$$

Example 1: Using a stop watch the actual time it took to drive one mile while traveling at 60 mph according to the GT was 63 seconds.

$$\text{Step 1. Percent difference} = \frac{63 - 60}{60}$$

$$\text{Step 2. Percent difference} = \frac{3}{60}$$

Step 3. Percent difference = .05 or 5.0%

Adjusting the Speed Display

1. Use one of the methods described in the previous section to determine the exact percentage difference between the GT and your actual speed.
2. Choose the opposite percentage in the Adjust Speed Display menu.

For example, if the difference between your actual speed and the speed displayed on the GT was 5%, you should choose -5% (negative five percent).

Driving Coach Setup *(continued)*

Checking Average Fuel Economy

It is important to check the accuracy of the average economy readout on the GT at least once every changing season. There are many reasons to check and adjust the average fuel economy, here is one example: The fuel delivered to gas stations during the winter contains an average of 1.3% less energy than the fuel delivered in warmer seasons. That means that the same amount of liquid is going into the tank, but it is 1.3% less effective, on average. There are many similar factors that affect your fuel efficiency that you cannot control and the GT cannot sense or adjust for. That is why it is important to adjust the fuel economy of the GT every once in a while.

To adjust the Average Fuel Economy displayed by the GT, follow these steps:

1. Go to the gas station and get a full tank of gas.
2. Reset both of the following gauges before driving away from the gas station:
 - The Average Economy on your GT.
 - The trip odometer on your vehicle.
4. Drive the vehicle for an entire tank (or two)
5. Calculate your vehicle's average fuel economy by hand using the following equation:
6. Use the equation below to calculate the Percent Difference between the average fuel economy that you have calculated and the average fuel economy that is displayed by your GT.

• NOTE: If the speedometer on the vehicle is not accurate, then the odometer will also be incorrect. You will need to be able to calculate the exact number of miles driven before your next refill.

$$\text{Calculated Average Economy} = \frac{\text{miles driven}}{\text{gallons used to fill the tank back up}}$$

$$\text{Percent difference} = \frac{\text{GT Average Economy} - \text{Calculated Average Economy}}{\text{Calculated Average Economy}}$$

Example 1: Assume the GT Average Economy is 24 mpg and the Calculated Economy is 21.

Step 1. Percent difference = $\frac{24-21}{21}$

Step 2. Percent difference = $\frac{3}{21}$

Step 3. Percent difference = .142 or 14.2% round down to 14%

Adjust the Average Fuel Economy

Follow the steps listed below to change the average fuel economy that is displayed by the GT:

1. Go to the Main Menu
2. Choose Vehicle Setup
3. Choose Adjust Economy Display
4. Use the buttons on the right to move up and down the percentages
5. Choose a percent value that is the opposite sign of the Percent Difference that you calculated using the equation above.
 - For example, if you determine that the Percent Difference is 14%, you should choose -14%.



Vehicle Setup

Select Pyro Source

Choose either factory installed or Bully Dog pyrometers.

Set Defuel Levels

Set the temperature level at which the extra power level settings on your GT are automatically turned off to protect your engine from damage.

It is also possible to turn each of these settings completely off. This is appropriate if the sensor for that setting is not available or if you do not wish to have that setting controlled by the GT.

See the Pyrometer Calibration section on page 41 for help in determining the correct temperatures for the defuel settings:

Adjust Economy Display

Change the miles per gallon shown by the GT.

This setting should be changed if the GT is showing incorrect fuel mileage. See page 14 for more information about how to do this.

NOTE: The defuel option is only available on vehicles that can adjust horsepower levels on the fly. For vehicles that cannot adjust power levels on the fly, on screen warnings are available in place of automated defueling.

Adjust Speed Display

Change the vehicle speed shown by the GT.

This setting should be changed if the GT is showing an incorrect vehicle speed. See page 13 for more information on how to do this.

Pyro 1 Temperature Level

Pyro 2 Temperature Level

Engine Coolant Temp Level

Transmission Temperature

Turn this setting off or add a Bully Dog pyrometer sensor if your vehicle does not have a factory transmission temperature sensor.

Startup Coolant Temp Level

This option was included to ensure that the vehicle is warmed up properly before the GT tuning options that provide additional power are available to be used.

NOTE: If the GT is stuck in Engine Warm Up mode, change this setting to a lower temperature or turn the feature off.

User Options

Set Background Theme

Change the display colors on your GT.

Adjust Backlight

Change the brightness for both the day and the night operating modes of the GT.

To change between night and day mode, hold both the right buttons (the up and down buttons) while you are in the general gauge display.

Set Animation Preferences

Turn the Wave Effect on or off. This effect creates a ripple on the screen whenever you press a button.

English/Metric Units

Switch between miles/kilometers and gallons/liters.

Reset to Default

Change the user preferences back to the original Bully Dog default settings.

This option does not change other GT features to default settings.

Show Settings

The Show Settings screen will show you information about your vehicle, the GT, and your current vehicle settings. This screen will also indicate if the GT tune is currently installed or not installed on a vehicle.

Uninstall Download

This option will allow you to uninstall the tune from your vehicle. This process is very similar to installing the tune, so be sure to take the same precautions listed on pages 32-35.

You can find more information about uninstalling the download on pages 38-40.

Update Firmware

This option will update the software on the GT itself from the files on the Micro SD card. This is an important final step to the update process. See pages 20-27 for more information about updating your GT.



SPECIAL FUNCTIONS

The following features are not available for all vehicles. Check the chart in the Product Information Sheet for a complete list of which features are available for specific vehicles. You can access the Product Information Sheet by clicking the link below:

<http://www.bullydog.com/documents/40420%20GT%20Diesel%20product%20information%20sheet%20v5.4%20.pdf>

Chevrolet/GMC

DPF Burn-Off (2007.5 – 2012 Chevy/GM 6.6L Duramax Vehicles Only)

The DPF Burn-Off feature will send a request to the vehicle to start the DPF burn-off of the diesel particulate filter. Follow the on-screen instructions provided by the GT when using this feature.

NOTICE! The DPF Burn-Off function should only be used if absolutely necessary. If the diesel particulate filter clogs often on a particular vehicle there may be an issue with the filter itself, which would need to be serviced by an OEM dealer.

Dodge

Mobile Desoot (2007.5 – 2009 Dodge 6.7L Cummins Vehicles Only)

The Mobile Desoot feature will send a request to the vehicle to start the desoot process of the diesel particulate filter. Follow the on-screen instructions provided by the GT when using this feature.

NOTICE! The Mobile Desoot should only be used if absolutely necessary. If the diesel particulate filter clogs often on a particular vehicle there may be an issue with the filter itself, which would need to be serviced by an OEM dealer.

Auto Door Lock

Enabling this feature will cause all doors to lock once the vehicle reaches a speed of 15 mph. Once the vehicle comes to a complete stop, if the driver's door is the first to open all of the other doors will automatically unlock.

Head Lamp Delay

Use this feature to set the amount of time that the head lamps remain on after the vehicle has been turned off. Use the up/down arrows on the tuner to scroll in 5 second increments between 0 and 80 seconds.

Fog Lamp

Enabling this feature will allow the fog lights and high beams to operate at the same time. This feature is for Off-road use only.

Horn Chirp on Lock

Enabling this feature will sound a horn chirp each time the doors are locked when using a remote door lock system.

Optical Chirp on Lock

Enabling this feature will flash the hazard lights each time the doors are locked when using a remote door lock system.

Seat Belt Reminder Chime

Enabling this feature will remind the driver to buckle their seat belt with an audio chime each time the vehicle is put into drive and the driver's seat belt is not buckled.

Accessory Delay

Use this feature to set the amount of time that the accessory items in the vehicle will remain on after the vehicle has been shut off as long as the doors remain closed. Accessory items include the radio, cigarette lighter, etc. Use the up/down scroll buttons on the tuner to choose between the following settings: 0 seconds, 45 seconds, 5 minutes, 10 minutes, 30 minutes, or 60 minutes.

Unlock Driver Door

Enabling this feature will affect the way the doors unlock when using a remote door lock system. If enabled, the first time the remote unlock button is pressed only the driver door will unlock, the second hit will unlock the passenger doors. If disabled, all doors will unlock on the first press of the remote unlock button.

Daytime Headlights:

Use this new option to turn daytime running lights on or off while driving.

VEHICLE SPECIFIC DOWNLOAD FEATURES

These options cannot be adjusted OTF (On the Fly). This means that once they are set during the install download process, they can only be changed by starting that process again and choosing to Change Settings when prompted by the GT.

The following features are not available for all vehicles. Check the chart in the Product Information Sheet for a complete list of which features are available for specific vehicles. You can access the Product Information Sheet by clicking the link below: <http://www.bullydog.com/documents/40420%20GT%20Diesel%20product%20information%20sheet%20v5.4%20.pdf>

Speed Limiter

This changes the top speed that the car will reach before the engine automatically limits the power needed to go faster.

Calibrate Speedometer

This feature will adjust the speed displayed by the factory installed speedometer on your vehicle. This can be useful to correct an inaccurate speedometer caused by a change in tire size.

Calibrating for any tire size over 35" may cause the on-dash ABS light to turn on.

Low End Power

This feature improves the throttle response in the lower end of the RPM range, resulting in more horsepower and torque at lower RPMs. This feature is not recommended for everyday use.

This feature is available only on Dodge 5.9L Cummins '03-'07 vehicles with automatic transmissions.



IMPORTANT WARRANTY INFORMATION

Vehicle Warranty

You can access information about your vehicle warranty and your rights as an owner to use aftermarket products without voiding the warranty at the following SEMA (Specialty Equipment Market Association) website:

<http://www.bipac.net/page.asp?content=warranty&g=semaga>

GT Warranty

A new GT is covered for one year after the date of purchase. This warranty covers repairs for factory defects; it does not cover accidental damage or reset services. See page 41 for more information about GT resets and the required fee. For pricing information and assistance in having a damaged GT unit repaired, contact technical support. See page 49 for more information about contacting technical support.

You can find more specific warranty information at the following page on the Bully Dog website:

<http://www.bullydog.com/warranty.php>

UPDATING THE GT

OVERVIEW

FAQs about Updating

Why do I have to update my GT?

Because it's very important! These are just some of the reasons:

1. Vehicle manufacturers regularly change the part numbers and other information that the GT needs to know in order to communicate effectively with your engine computer. If the GT doesn't have updated information, it may not work correctly with your vehicle. Bully Dog releases updates when necessary to keep up with any changes that vehicle manufacturers make and give our customers the best support possible.
2. Our technical support team gathers information about any problems experienced by customers and works with the engineers to fix them as soon as possible. If these fixes can help other people avoid similar problems, our engineers include them in the updates that we release for everybody. One of the most important troubleshooting steps we take when someone encounters a problem is to make sure they have the most recently released software version. This often immediately fixes the problem!
3. Bully Dog engineers are constantly working to expand the features and vehicles that the GT is able to support. Once a new vehicle or option is unlocked, they make sure it is available to everyone by including it in the updated software version.

Do I have to update my brand new GT?

Yes! There is no way to know how long your particular GT may have been waiting on the shelf for you.

How often should I update?

Updates are released regularly, so you should check for them at least four times a year. A good rule of thumb is to check once every three months.

It is also a good idea to update the GT if you have uninstalled the tune for any reason, like taking your vehicle in for service. This will help you avoid any problems during the reinstall if the engine computer has been flashed and has new part numbers (this is very common, even for a routine vehicle service).

What is included in updates?

Updated part numbers and other information from vehicle manufacturers, tested fixes for problems customers may encounter, and any additional features or vehicles that our engineers have unlocked.

How can I tell which software version I currently have?

1. Go to the Main Menu.
2. Choose the Show Settings option.

The software version is listed under System Info, next to Software.

How can I use the Update Agent to check for updates?

Start the Update Agent application and connect the Micro SD card to your computer using the card reader that came with your GT. If you have an older model of GT and did not receive a card reader, you can purchase one from a local retailer who carries card readers that are capable of supporting the Micro SD card format.

The Update Agent should automatically recognize the Bully Dog device, check the current software, and let you know if an update is available.

See page 26 if your SD card is not automatically recognized by the Update Agent.



UPDATING THE GT

Basic Steps to Update (Short Version)

You can find a more detailed description of this process on pages 22-25.

1. Run the Update Agent.
2. Connect the Micro SD card to your computer.
3. Choose the vehicle application and let the Agent search.
4. Click the Update button.
5. When the Update is finished, put the Micro SD card in the GT.
6. Update the GT from the SD card by choosing Update Firmware from the Main Menu.



What You Need to Update the GT

1. A computer with internet access.

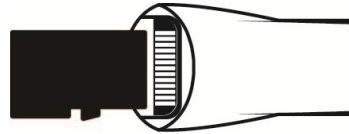
- Currently, it is most convenient to update if you have a Microsoft Windows computer.
- If the only computer that you have access to is an Apple, you can find information for how to use this type of computer to update on page 27.

2. A way to connect the Micro SD card to the computer.

There are two different options:

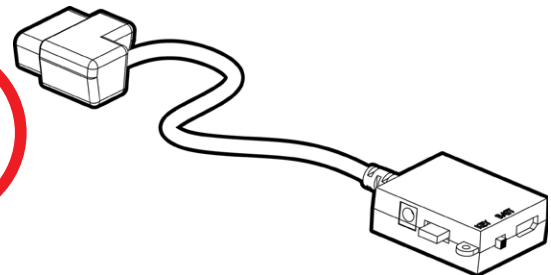
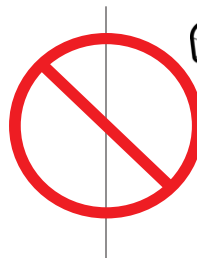
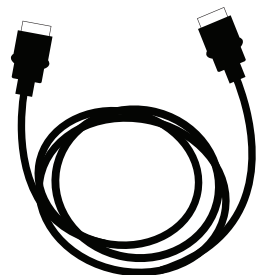


- A Micro SD card reader to connect it directly to the computer.



- A USB cable to connect the GT to the computer (with the Micro SD card installed in the GT).

Note: Do not try to connect the HDMI cable or the OBDII adapter plug to update the GT.



UPDATING THE GT

(DETAILED STEPS FOR WINDOWS)

The following instructions are intended for Microsoft Windows computers.
Please see page 27 for Apple computer instructions.

Uninstall the tune from your vehicle

1. If the tune is not yet installed, skip to Connecting your micro SD card.
2. For information about uninstalling the tune, see pages 38-40.
3. For information about checking to see if the tune is installed, see page 40.

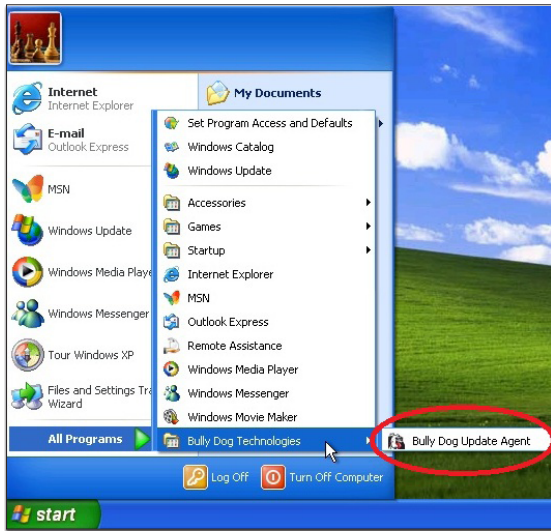
Connect your Micro SD card to a computer with internet access

1. Connect the Micro SD card using a card reader.

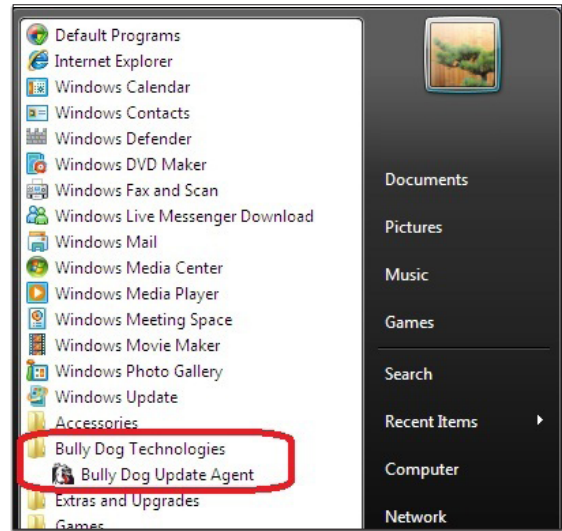
OR

2. Connect the GT with the Micro SD card installed by using a USB cable. Do not use the HDMI cable or the OBDII adapter plug to update the GT.
3. Download and install the Update Agent application.

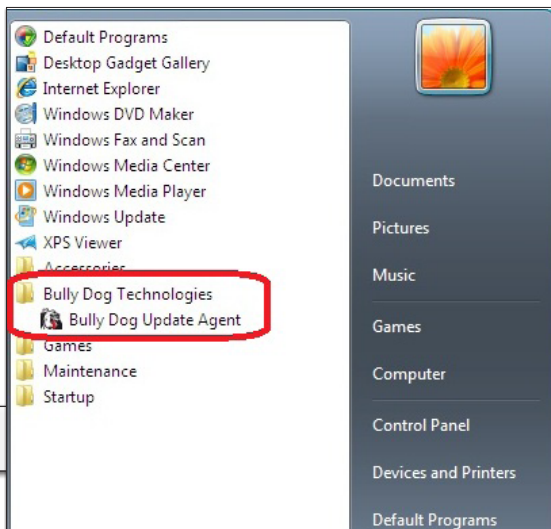
- If it is already installed, skip to step 5. You can see if it is already installed by checking your Start Menu under All Programs. The Update Agent will be listed under the Bully Dog Technologies folder:



Windows XP



Windows Vista



Windows 7

Note: If you don't have the Update Agent installed see the next page for details on how to download and install it from the internet.



UPDATING THE GT

(DETAILED STEPS FOR WINDOWS)

The following instructions are intended for Microsoft Windows computers.

- 4. You can download the installation file at http://www.bullydog.com/update_agent.php

HOW TO INSTALL THE UPDATE AGENT:

1.  [Click here](#) to download the Update Agent.
2. Save file to a known location on your computer.
3. Run program and let agent install.
4. To find agent, click Start Menu > All Programs > Bully Dog Technologies
5. Plug unit in and go through new hardware wizard.

- Run the application – you do not need to save it.



- If you get pop-up messages asking for permission to install, click the buttons to let your computer finish installing the Update Agent.



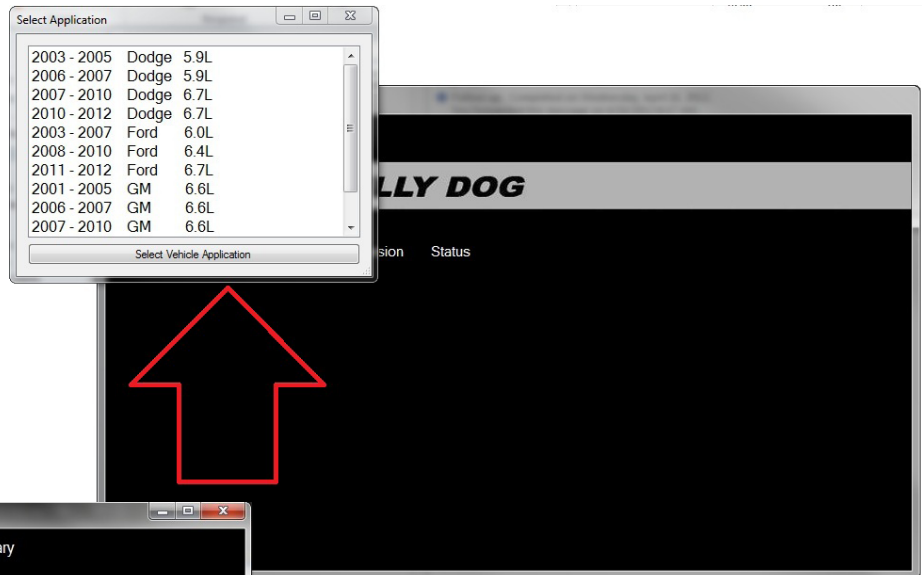
UPDATING THE GT

(DETAILED STEPS FOR WINDOWS)

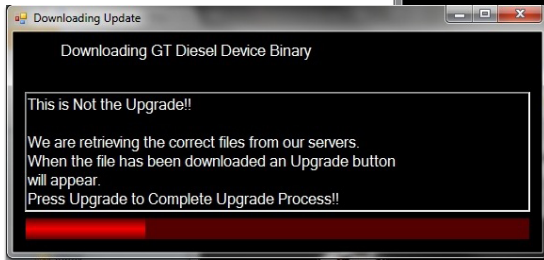
5. Run the application.

- If you have just installed it, the Agent may already be running.
 - You can show the Update Agent by right-clicking the icon in the system tray at the bottom right corner of your screen, and then clicking **Show Agent**.
 - Or you can stop the previous instance of the Update Agent and open a new one – either option is a winner.
- If you have already installed the application in the past, it should be listed under Bully Dog Technologies in your computer's list of All Programs. Just double-click the Update Agent icon in that folder to let it start.

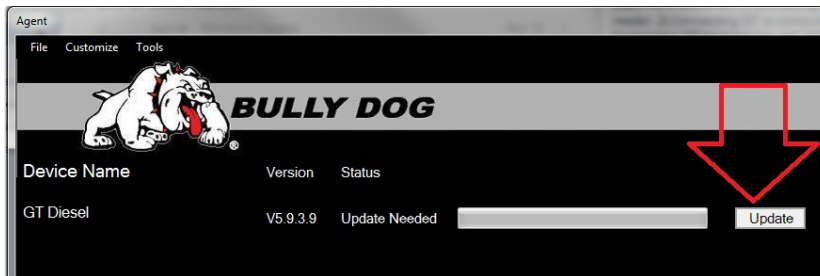
5. Choose the correct application from the list for your vehicle and click Select Vehicle Application.



6. Let the Update Agent search and download available update files.



7. Click the Update Button and let it write the update to the SD card.

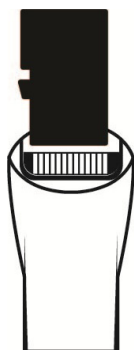


UPDATING THE GT

(DETAILED STEPS FOR WINDOWS)

8. NOTE: This step varies depending on how you have connected the Bully Dog to your computer.

- If you have the Micro SD card connected to the computer:



- Disconnect it from the computer and put it in the GT.
- Then turn the GT on by connecting it to a computer or to a vehicle and turning the key to the Run position.

- If you have the GT connected to the computer:

- Press the second key from the top on the left side to get out of USB mode.
- OR
- Disconnect the GT from the computer, plug it in to your vehicle, and turn the key to the Run position.



9. Go to the Main Menu on your GT.

10. Go to the bottom of the menu and choose Update GT Software.

- If the Update GT Software option is not available on the Main Menu:

- Choose Update GT Firmware.

OR

- Scroll to the top and choose Change Vehicle, then select your vehicle from the list.

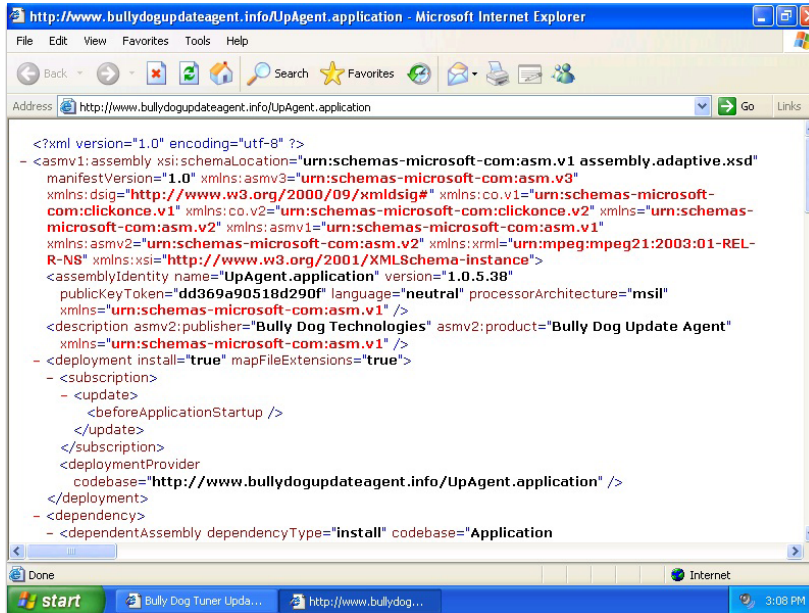
11. Confirm that you want to load the file.

12. Let the GT load the file and reboot. Do not disconnect it or turn it off during this part of the process.

The GT has now been updated!

TROUBLESHOOTING UPDATING PROBLEMS

The Update Agent Won't Install



Q. Why does my computer open a window full of weird symbols when I try to install the Update Agent?

A. Your computer is not up to date and you need to run Windows Update first. See pages 42-48 for more information about running Windows Update.

The Update Agent Won't Recognize my Micro SD card

Q. Why isn't the Update Agent recognizing that the Micro SD card is connected to my computer?

A. The SD card is missing an important file. You can get the file and fix the problem by following these steps:

1. Go to the Bully Dog website.
2. Click on the link for the Update Agent page.
3. Click on the GT Diesel card file link.
4. Find the downloaded file on your computer and copy it to your SD card.
 - Your computer will most likely not be able to open this file. This is not a problem; all you need to do is copy the file to the SD card.
 - The name of the file is GTDIDF.bin
5. Restart the Update Agent application and it should recognize the SD card.



UPDATING YOUR GT

(DETAILED STEPS FOR APPLE)

1. **Return your vehicle to stock.** See pages 38-40 for detailed instructions on this process.
2. **Connect your Micro SD card to your computer.**
 - Connect the Micro SD card using a card reader.
 - OR
 - Connect the GT with the Micro SD card installed by using a USB cable. Do not use the HDMI cable to update the GT.
3. **Go to the Bully Dog website and click on the link for Update Agent.**
 - There are two locations for this link:
 - Under Quick Links, on the lower right side of the home page
 - Under Download, in the black toolbar on the upper right side of the home page.
4. **At the bottom of the page, under the heading for MACINTOSH USERS ONLY, click the link for GT Diesel.** This will allow you to download the zipped file labeled GTDFiles.zip.
5. **Find where your computer saved the file (it will most likely be in your Downloads folder).**
6. **Extract all the files in the GTDFiles.zip file.**
7. **Select ALL contents within the "COPY" folder and drag to SD Card. Select "COPY & REPLACE", or "replace all" option**
8. **Install the Micro SD card in your GT unit.**
9. **Connect your GT unit to your vehicle.**
10. **Choose the Update GT Software option from the Main Menu.**
 - If the Update GT Software option is not available:
 - Choose Update GT Firmware.
 - OR
 - Scroll to the top of the Main Menu and choose Change Vehicle, then choose your vehicle from the list.
11. **Confirm that you want the GT to load the file.**
12. **Let the GT finish loading the file and rebooting – be sure not to disconnect it or interrupt power in any other way during this part of the process.**

The GT has now been updated!

PHYSICAL INSTALLATION

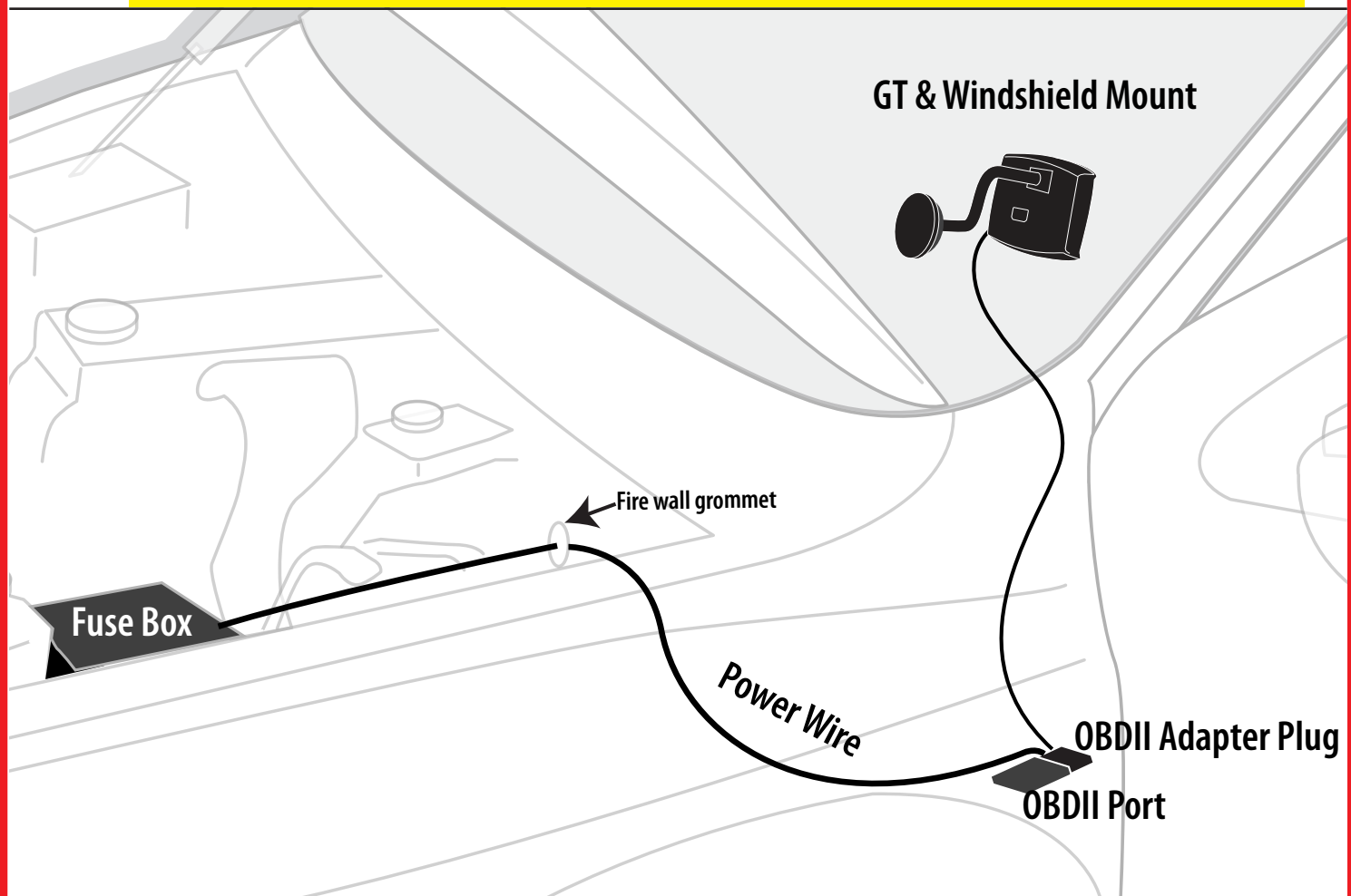
Be sure to check the list and description of included parts on pages 4-6.

Brief Preview

This is a quick list of the basic installation steps. You can find more specific information about each step in the next section.

1. Connect the OBDII adapter plug to the port under the dash.
2. Plug in the power cable to the fuse box and connect it to the adapter plug.
3. Run the HDMI cable under the dash.
4. Mount and connect the GT.

The illustration below shows how to install the power wire if there is no fuse box available inside the cab of the vehicle. If a fuse box is available inside the cab, there is no need to run the power wire through the firewall into the engine bay.

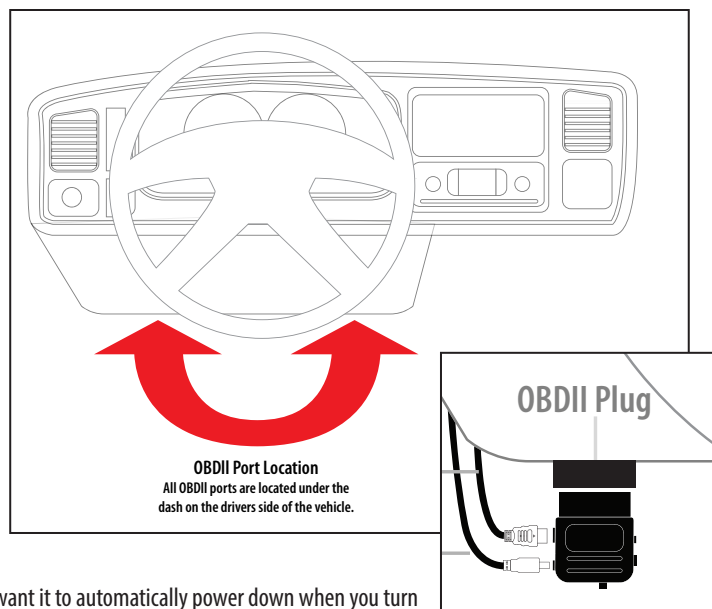


PHYSICAL INSTALLATION

Detailed Instructions

1. Connect The OBDII Adapter Plug to the OBDII Port. See page 6 for a detailed description of the different parts of the OBDII adapter plug.

- Find the OBDII port in your vehicle. As shown in the illustration, the specific location of the port can vary between different vehicles, but it is always somewhere under the driver's side dash. The OBDII port will have the same shape as the end of the adapter plug.
- Once you have found the port, simply connect the adapter plug to it.



2. Connect The Power Cable. The power cable is not really optional if you want to enjoy the originally designed functions of the GT. It is only optional under one of the following circumstances:

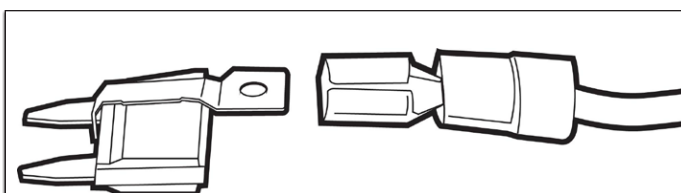
You do **not** want to keep the GT permanently installed and plan on disconnecting it when you are not actively using the unit.

You **want** the GT to remain on at all times, regardless of the effect that this could have on your car battery

You prefer physically switching the GT on and off and do not want it to automatically power down when you turn the key to the off position.

Otherwise, in order for the GT to work as originally designed, it is very important for the power cable to be installed as described below:

1. Locate an ignition fuse.
 - An ignition fuse is one that is controlled by the position of the key.
 - Sometimes we call this a "key-on" or "key-off" fuse.
 - The fuse that controls the front windshield wiper is usually perfect, but any fuse that turns off when the key is turned off will work just fine.
 - Every vehicle is different. There is no way to provide wiring diagrams for all vehicles. You will be able to find the information for your vehicle in the owner's manual or online.
 - Some vehicles have a fuse box inside the cab. If your vehicle does not have a fuse box inside the cab, you will need to locate the fire wall and connect the power cable to the fuse box under the hood.
2. Connect the power cable to the fuse.
 - You may have received a fuse tap with your GT. See below for an illustration and instructions on using the fuse tap to install the power cable.
 - You can also simply put the power cable into the fuse box along with the fuse that is normally installed in that location. See the diagram and picture for more information.
 - If you did not receive a fuse tap, but prefer to use one to install your power cable, you can purchase one at your local auto parts store. Be sure to ask for installation instructions if none are included with the fuse tap.



Using the Fuse Tap and Spade

1. Find and pull the fuse that you are going to use to insert the GT Power Cable.
2. Slip the fuse tap over the prong on the fuse.
3. Fit the spade over the fuse tap and crimp them together with pliers.
4. Put the tapped fuse back into the fuse box.

PHYSICAL INSTALLATION

Detailed Instructions (Continued)

3. Run the HDMI cable under the dash.

This step helps you install the HDMI cable in a way that is discreet, stylish, and that helps to protect the GT

1. Plug one end of the HDMI cable into the port on the OBDII adapter plug.
2. Run the middle of the cable up through the dash on the driver's side so that the end of the cable comes out near the A-pillar.
 - It may be necessary to temporarily remove the weather stripping and dash panel to successfully hide the HDMI cable under the dash.
3. Make sure that there is enough slack in the cable to connect the GT when it is in the mount.

4. Connect and Mount the GT

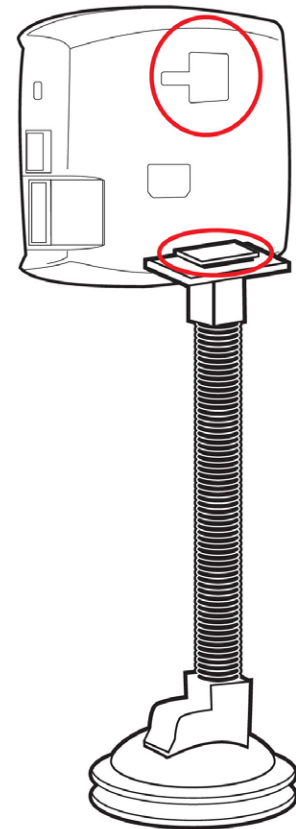
1. Install the mount that you have chosen. If you are using the Universal Windshield Mount included with the GT, see the installation instructions in the next section.
2. Connect the HDMI cable to the GT.
3. Secure the GT to the mount.

Using the Universal Windshield Mount

IMPORTANT NOTE: Safety is your first and most important responsibility as a driver. Safety is also your first and most important concern when placing your GT. Make sure the GT does not create blind spots or distract the driver.

1. Locate the T-shaped socket on the back of the GT.
2. Place the square top of the Universal Windshield Mount into the square part of the T-shaped socket on the GT.
3. Slide to the left to secure the GT to the mount.
4. Place the suction cup against the windshield and use the lever to secure the mount to the windshield.

You will find information about alternative mounting options on the following pages.



**BULLY
DOG**
powered by DERIVE

ADDITIONAL MOUNTING OPTIONS

Bully Dog has created alternative mounting solutions which will allow you to mount your GT in even more convenient locations.

RAM Mirror-Mate

Part Numbers: 31600 and 33600

The RAM Mirror-Mate mounting kit will allow you to mount your GT directly beneath your rearview mirror. This heavy-duty mounting solution provides easy and intuitive access to your GT without blocking the driver's view.

You can find more information about the Mirror Mate by clicking the link below:

http://www.bullydog.com/product_listing.php?prodlist=RAM%20Mounts



RAM Suction Cup Mounting Kit

Part Number: 30600

This kit is the best suction cup mount on the market. The amazing holding power will allow you to mount your GT to multiple surface materials in any vehicle – which means that you can try different places and find the best place for your GT to be at any time.

You can find more information about the RAM Suction Cup Mounting Kit by clicking the link below:

http://www.bullydog.com/product_listing.php?prodlist=RAM%20Mounts

Pillar Mount Gauge Pods

Bully Dog also offers gauge pods, which will allow you to mount the GT on the pillar of your vehicle.

The gauge pods are vehicle specific, so you will need to get the part number that matches your vehicle make and year.

Visit our website at http://www.bullydog.com/product_listing.php?prodlist=Gauge%20Pods for more information.



INSTALLING THE TUNE

In order to enjoy additional horsepower and other advantages of tuning your vehicle, you need to use the Install Download feature.

The process is basically the same when you are installing, changing settings, or returning to stock.

CAUTION! This option actively reprograms the engine computer in your vehicle – if the process is interrupted because of poor preparation you will have problems which could prevent you from using the GT or even being able to drive your vehicle for a few days. In order to have the best installation experience possible, it is important to review the instructions and pay close attention to the preparation steps listed below:

Important Preparation Steps

Choosing an Appropriate Time and Place to Install

Do NOT install if you will need to use the vehicle to get somewhere soon.

DO set aside at least an hour for this part of installation.

Under optimal circumstances the installation can be completed in less than 30 minutes.

If you encounter any problems, you will need at least an hour to resolve the problem.

Do NOT install if the vehicle is in a remote location.

DO make sure that you have access to a phone and a computer with internet access.

DO update the GT online by using the Update Agent before you try to install.

You might need to connect to a computer to get special files from technical support if you encounter problems during the install.

Do NOT install if you do not have a way to contact technical support.

DO make sure that you can contact Bully Dog technical support.

Technical support is open Monday-Friday, 7 a.m. – 6 p.m., Mountain Standard Time.

If you decide to install on Friday evening and encounter problems, you might not be able to use your vehicle until you are able to contact technical support on Monday.

See page 49 for more information about contacting technical support.

Managing Other Electronics

DO turn off all factory installed electronics inside the vehicle. This includes:

Headlights, heater, air conditioning, stereo, DVD players, etc.

Failing to turn off all electronics can prevent a successful download.

DO disconnect additional electrical appliances. Remove any chargers or electrical devices connected to:

Cigarette lighters, USB ports, or other types of electrical outlets in the vehicle

DO disconnect any other aftermarket electronic devices. This includes:

Trailer brakes, stereo, alarm, CB, remote start, Sirius/XM satellite radio, etc.

Any electrical device that was installed after the vehicle was released from the factory.

Disconnect these items from the fuse box, or other power connection. You do not have to completely physically uninstall them; just make sure they are not getting power.

Note: It is important to make sure that electrical devices are turned off or disconnected as described above while installing tuning to the vehicle. Once the download is installed, you can reconnect and turn on all of the electronics that you normally use.

IMPORTANT NOTE: It is not recommended to use the GT with any other electronic tuner designed to increase horsepower.



INSTALLING THE TUNE

Important Preparation Steps (Continued)

Make SURE that the Battery is Charged

DO make sure that your batteries are fully charged before beginning any download.

It is a good idea to have a battery charger ready to connect to your vehicle if the batteries begin to lose their charge while you are installing the download.

IMPORTANT NOTE: It is very important that the tuner is not interrupted while it is writing to your engine computer – if the batteries die and the tune is interrupted, it could prevent you from being able to start your vehicle.

Make SURE the Tuner is Ready

DO complete an online update with the Bully Dog Update Agent.

This is a free application available on the Bully Dog website.

This requires a computer with internet access.

See pages 20-27 for instructions on updating the GT.

DO make sure that the tune has not already been installed.

1. Go to the Main Menu on the GT.
2. Choose the Show Settings option.
3. Check what is showing next to status

If the GT shows Installed

- Connect the GT to the original vehicle and uninstall the tune.

- If this cannot be done, contact technical support for a reset – there is a mandatory fee for this service. See page 41 for more information.

If the GT shows Not Installed you can continue with your preparations to install the download to your vehicle.

If the GT shows Recovery, contact technical support for further assistance. See page 49 for more information about contacting technical support.

INSTALLING THE TUNE

Removing Fuses

This step is vital for successful installation on some vehicles, but not required on others. The following pages include information about which fuses need to be pulled to allow the GT to install the tune to the engine computer on specific vehicles. If the fuses are not pulled, the tune will most likely freeze during the install process. Fuses can be replaced after the tune installation has been completed.

99-'01 Ford 7.3L Power Stroke:

Fuses 16, 19 & 29

'02-'03 Ford 7.3L Power Stroke

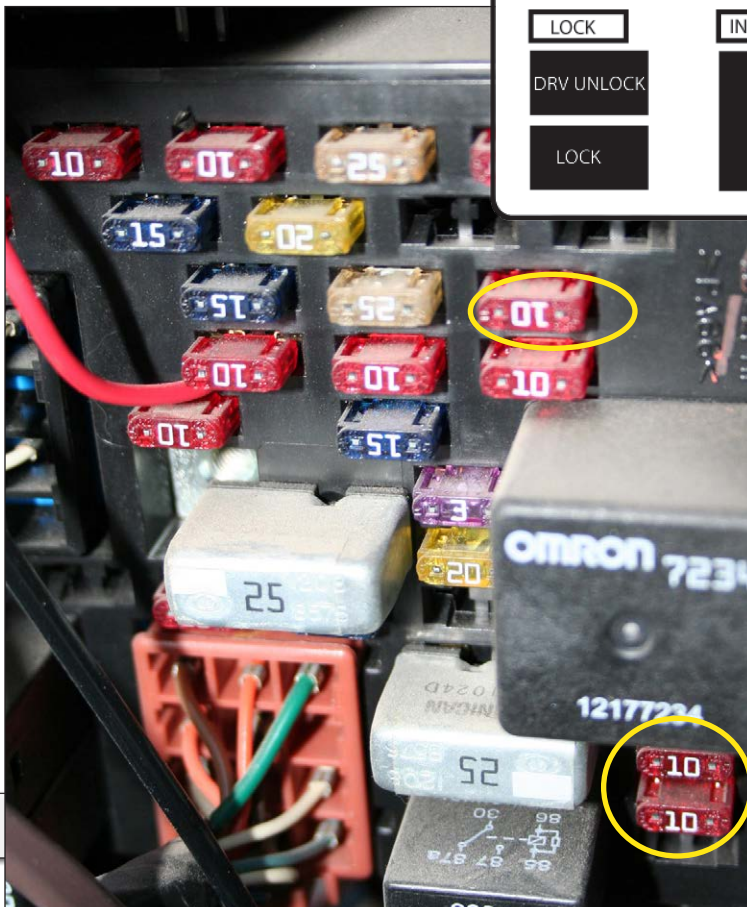
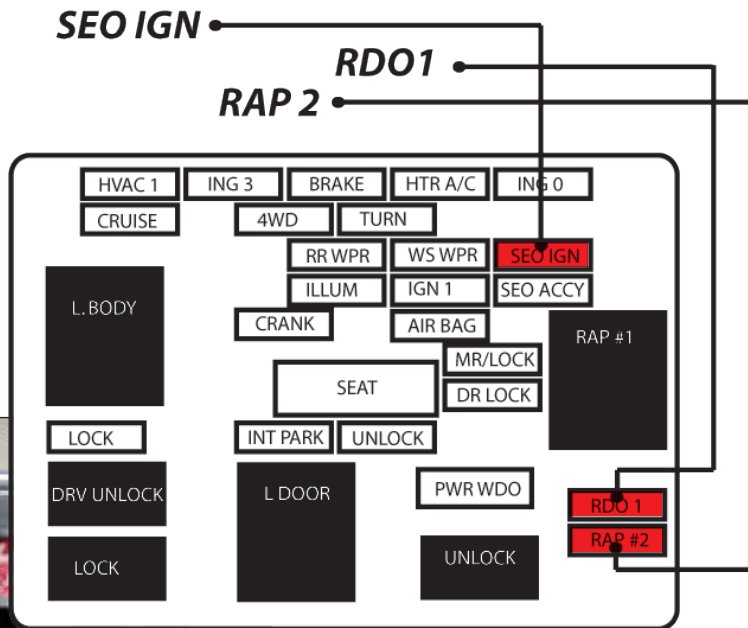
Fuses 19, 35 & 41

2001-2002 Duramax Fuses

SEO IGN

RDO 1

RAP 2



Important: this fuse box is located inside the cab on the driver's side of the vehicle



HOW TO INSTALL THE TUNE

1. Complete the Pre-install steps

- Update GT using Update Agent (pages 20-27).
- Physical Installation (pages 28-31).
- Install tune preparations (pages 32-35).

2. Turn your key to the Run position. (DO NOT start the engine)

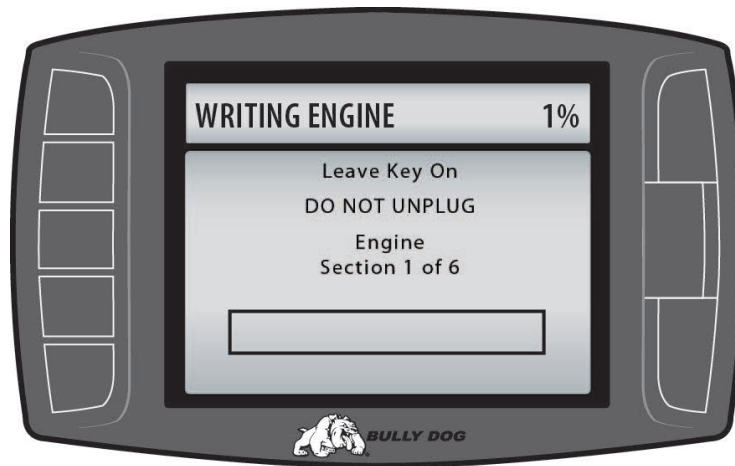
3. Go to the Main Menu

4. Choose Install Download

5. Follow the instructions on your GT screen, which will include the following steps:

- You will need to turn your key to different positions and then press Continue.
Do NOT start the engine when turning the key to the Run position, or at any other time when you are installing the tune.
- You may be prompted with choices for certain settings like the speed limiter. Many of these are vehicle specific.
See pages 17 and 18 for more information on these settings.
- If there is a problem or the GT displays an error message, do not change anything and contact technical support immediately.
See page 49 for more information about contacting technical support.

IMPORTANT NOTE: There are certain times when disconnecting or interrupting power to the GT can interfere with the engine computer programming process. If the Writing Engine process is interrupted, the programming on your engine computer can be corrupted. This can cause your vehicle not to start and possibly even require the ECM to be replaced. The illustration below is an example of one of the times during the installation when it is vital that the power is not disturbed.



Note: There may be times when our technical support team will instruct you to disconnect the tuner even though the screen tells you not to unplug.

6. The GT will indicate when it is finished & then reboot to the Main Gauge Display

- Once the tuner has rebooted to the Main Gauge Display, you can start and use your vehicle like normal.



INSTALLING THE TUNE

Troubleshooting Installation Problems

Error During Installation

1. Make note of the code number and all information displayed on the screen.
2. Disconnect and update your GT. See pages 20-27 for instructions.
3. Make sure that you have disconnected all aftermarket electronics and completed all of the important preparation steps. See pages 32-35 for more information.
4. Try to install the download again.
5. If the error occurs again, contact technical support. See page 49 for more information about contacting technical support.

This troubleshooting procedure applies to all errors, including the following code numbers: 0, 141, 325 (on a 2011 Duramax), 358, 393

Gets Stuck on "Turn Key to Run"

1. Make sure that the key is turned as far as possible without turning the engine on.
2. Turn the key to the Off position, then turn it back to the On position.
3. Jiggle the key.
4. Disconnect the GT.
5. Update if this has not already been done. See pages 20-27 for more information.
6. Reconnect the GT.
7. Make sure that all aftermarket electronics are disconnected from the vehicle.
8. Pull fuses if necessary for your vehicle. See pages 34 and 35 for more information.
9. Try installing a battery charger to maintain voltage. (This step can solve many problems, even if your battery is new and fully charged). See page 33 for more information.
10. Try to install the download again.
11. If the error occurs again, contact technical support.

GT Freezes in the Middle of the Download.

Try installing a battery charger to maintain voltage. (This step can solve many problems, even if your battery is new and fully charged). See page 33 for more information.

UNINSTALLING - RETURNING TO STOCK

What does this mean?

“Uninstalling the tune” and “returning to stock” are different ways to describe the same thing: writing the original (stock) information to the engine computer so it uses the settings that it used before you installed your GT. Doing this also sends a signal to the GT to let it know that it is no longer installed on a vehicle, which will allow you to install the tune at a later time. The GT will not allow you to install if the tune has already been installed on a vehicle.

When to Return to Stock

You should return to stock in ALL of the following situations:

- EVERY TIME you take your vehicle in for any type of service. It is a very common practice for the engine computer to be “flashed” (reprogrammed) during all types of service, even routine maintenance. If the tune from the GT is still installed when the engine computer is flashed, it can cause problems when you want to use your GT in the future. See page 38 for more information.
- If you want to install the GT on a different vehicle. For instance
 - If you have a second vehicle and want to try the GT on it. The GT can only be used on one vehicle at a time.
 - If you want to let a friend try the GT.
 - If you have decided to sell the GT to someone else.
- If the battery is having problems and could possibly go dead.
- If you need to disconnect the battery for any reason.

IMPORTANT NOTE: If you do not return your vehicle to stock, you may have to call in to technical support to have your GT reset. There is a mandatory fee for this service. See pages 41 and 49 for more information about the reset fee and contacting technical support.



UNINSTALLING - RETURNING TO STOCK

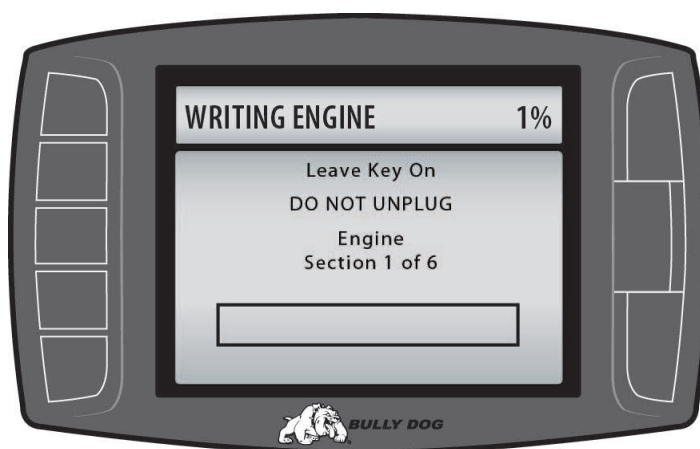
How to Return to Stock

There are two ways to return your vehicle to stock.

IMPORTANT NOTE: Both methods are very similar to installing the tune to your vehicle, so you should make the same preparations and take the same precautions. This means choosing a good time and place, making sure the battery is charged, pulling fuses (if necessary), disconnecting aftermarket electronics, etc. See pages 32-35 for more information.

IMPORTANT NOTE: There are certain times when disconnecting or interrupting power to the GT can interfere with the engine computer programming process. If the engine write is interrupted, the programming on your engine computer can be corrupted. This can cause your vehicle not to start and possibly even require the ECM to be replaced.

This illustration is an example of one of the times during the uninstallation when it is vital that the power is not interrupted and the tuner is not disconnected from the vehicle.



Note: There may be times when our technical support team will instruct you to disconnect the tuner even though the screen tells you not to unplug.

Uninstall Download

1. Choose the Uninstall Download option from the Main Menu.
 2. Follow the instructions shown on the GT screen.
 3. When the GT gives you a message that the tune has been removed, disconnect the GT from your vehicle.
 4. Check to make sure the tune has been removed from your vehicle. See page 40 for instructions on how to do this.
 5. Test your vehicle to make sure that it starts. If not, see the troubleshooting FAQ on page 52.
- If this option is not listed on the Main Menu, use the option described on the next page.

Install Download > Return to Stock

1. Choose the Install Download option from the Main Menu.
2. Follow the instructions shown on the GT screen.
3. Choose "Return to Stock" when the GT gives you the option between "Change Settings" or "Return to Stock".
4. Follow the instructions shown on the GT screen.
5. Check to make sure the tune has been removed from your vehicle. See page 40 for instructions on how to do this.
6. Test your vehicle to make sure that it starts. If not, see the troubleshooting FAQ on page 52.

UNINSTALLING - RETURNING TO STOCK

What if I Don't Return to Stock?

Here are some common examples:

- If you take your vehicle in for service, they will “flash” the engine computer. Even if you ask them not to, any dealer or shop will do this automatically – it is standard procedure for any vehicle they see and they really can't help themselves from following this ingrained habit. What they are doing is actually writing an updated file over any information that is currently saved in your engine computer. This includes the tune from your GT, so basically the tune is no longer installed and you will not be able to use the power level settings or any other options – but the GT doesn't know that, it still thinks that the tune is saved to your engine computer. Unless you go through the uninstall process with your GT, it will still show as installed and will not allow you to reload the tune on your vehicle or on any other vehicle. The only way to resolve this problem is to contact technical support and have the GT reset – there is a mandatory fee for this service. See page 41 for more information about the reset and fee.
- If you sell or trade-in your vehicle you will not be able to install your GT on another one without calling technical support to have the GT reset. See page 41 for more information about the required fee for the reset service.
- If you sell the GT to another person without uninstalling the tune from your vehicle first, they will not be able to use it. You will probably have negative consequences like an upset buyer, having to refund the purchase price or cover the cost of a reset. See page 41 for more information about resetting the GT and the mandatory fee.

By now, you may have noticed a pattern: if you do not return your vehicle to stock and something happens to your engine computer, you will need to call and pay the fee in order to have the GT reset. Page 41 has more information about the reset process and the required fee.

How Do I Know if the GT is (Still) Installed?

There are two ways to check if the tune is currently installed:

Main Screen

1. Look at the lower right corner of the main display screen.
2. If there is a box that reads “Power level setting not available until download is installed” the tune is not installed.
 - If there is anything else in this part of the main screen, the tune is probably installed. You can double check by using the method described below.

Show Settings Screen

1. Go to the Main Menu.
2. Scroll down.
3. Choose Show Settings.
4. Check to see what the GT shows next to “Status”.
5. If it shows:
 - Installed – the tune is still loaded on the engine computer.
 - Not Installed – the tune has been uninstalled and the vehicle is returned to stock.
 - Recovery – there is a problem and you should contact technical support. See page 49 for more information.



MORE INFORMATION

Pyrometer Calibration

What is Pyrometer Calibration?

Pyro calibration is a way to find the best temperature to use for the GT defueling or warning setting for your vehicle. This will help you prevent heat damage to your engine.

How to Calibrate Your Pyrometer

1. Return your truck to stock by uninstalling the tune. See pages 38-40 for more information.
2. Find a steep hill with a long road and a high speed limit.
3. Wait for a hot day.
4. Set up a heavy load on your vehicle.
5. Haul the load to the top of the hill.
6. Check the pyrometer temperature.
7. Add 150°F.
8. Change the defuel setting (or the setting to display a warning) to the new temperature.

Reset Fee

Why is This Policy in Place?

In the past, our technical support department has been flooded with people needing to reset their tuners. Because of this, we were not able to support the other people who needed help. The extra calls were coming for two different reasons:

1. Despite our best attempts to educate customers about the importance of uninstalling the tune before selling their vehicle or having it serviced, people did not remember or did not take seriously the requirement of returning their vehicle to stock and were calling in repeatedly.
2. Some dishonest people were installing the tune on multiple vehicles and calling in to have the unit reset in between each tune. The tuners are designed to only be installed on one vehicle at a time.

Once the policy for the reset fee was created, the number of calls to request tuner resets was significantly reduced and we were able to improve our support to everybody.

The reset process is relatively simple and a technician can help you complete the reset over the phone. See page 49 for more information about contacting technical support.

Performance Testing Software

This software allows you to download saved Performance Testing data from your GT (see page 11 for more information) to your computer and display the information as a graph for easy analysis.

You will be able to get graphs and raw Excel data for: speed, RPM, horsepower, and torque. You can print drag racing time slips, save and rename tests, and download up to 20 tests from your GT at one time.

Visit www.bullydog.com/performance_testing.php to download this free software

MORE INFORMATION

Windows Update

Windows XP

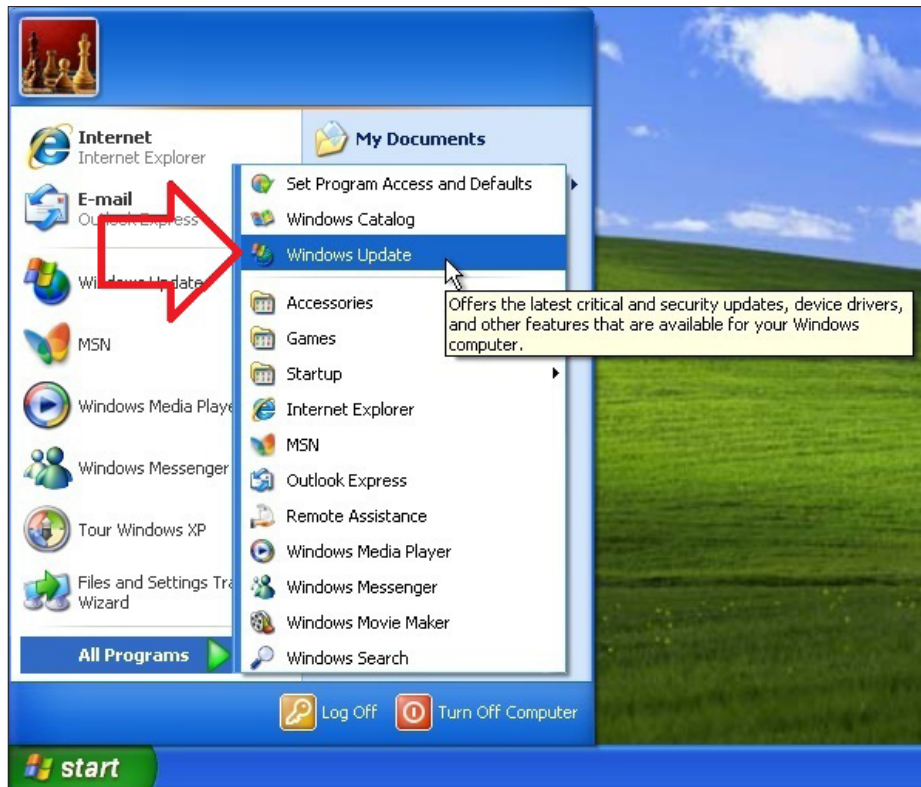
1. Click the **Start** button.



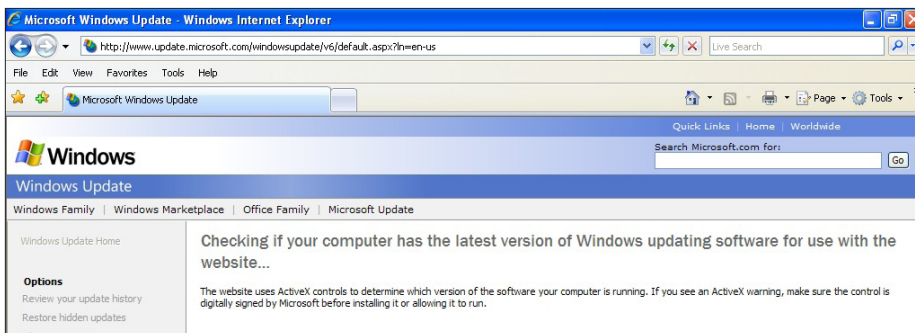
2. Click **All Programs**



3. Click **Windows Update**



4. Windows Update will check to see if you have the current version of the updating software:



MORE INFORMATION

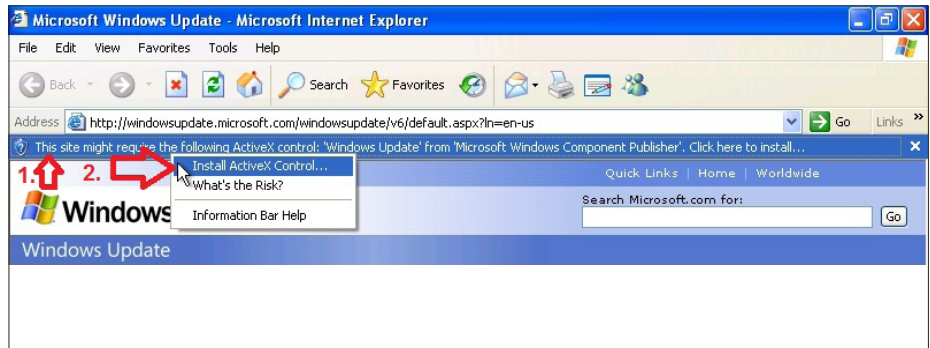
Windows Update (continued)

Windows XP

5. If your computer doesn't have the most recent update software, your browser will display a pop-up bar like the one shown below:

If your computer shows that message, click on the bar and then click **Install ActiveX Control**:

If your computer doesn't show that message, skip to step 9.



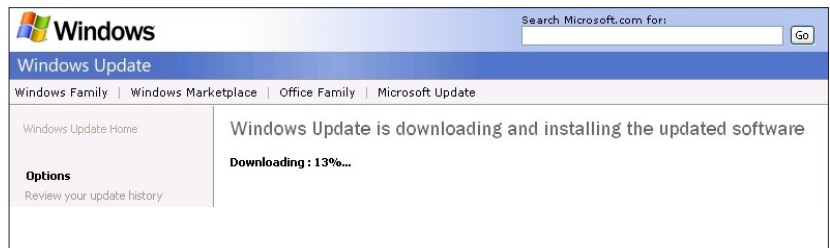
6. When the Internet Explorer Security Warning pops up, click **Install**:



7. Click the **Install Now** button.



8. Windows will then automatically download and install the latest Update Software.



MORE INFORMATION

Windows Update (continued)

Windows XP

9. At this point, you have two choices:

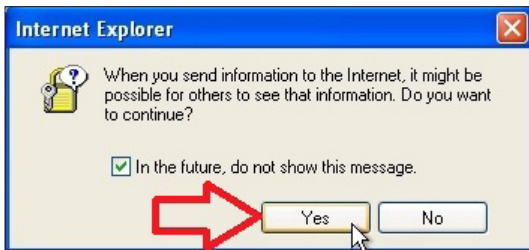
- **Express:** Choose this option if you prefer an automatic update and have the time to wait for all of the updates to finish downloading and installing. Depending on how many updates are required, this could take several hours. It is also likely that you will have to restart your computer in the middle of the process and may even have to run the Express Update more than once before your computer is completely up to date.
- **Custom:** Choose this option if you prefer to manually locate and install the update that your computer needs to be able to install and run the Bully Dog Update Agent.

NOTE: Because the Express update is relatively automated and quite time consuming, these instructions will only show you how to update using the Custom option. Either option will work; however, some of the updates completed during the Express update cannot be uninstalled, so you should be sure before choosing that option.

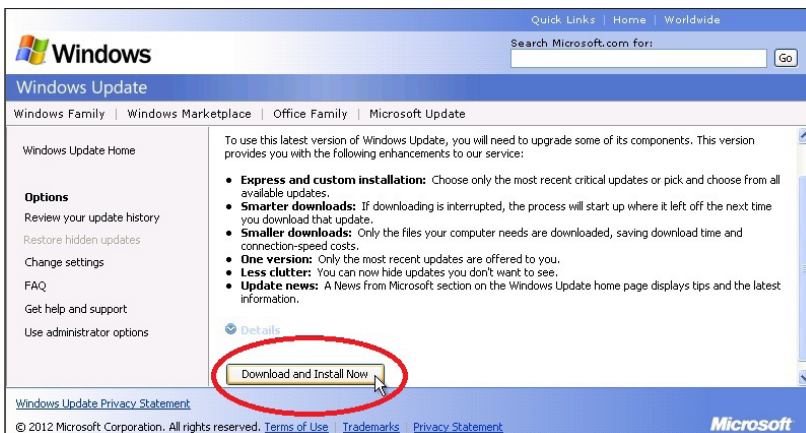
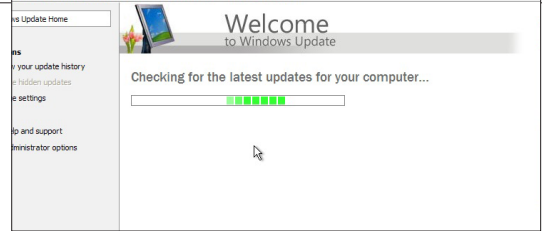


10. Windows will check your computer for updates:

NOTE that this could take several seconds or several minutes



Your computer might generate an Internet Explorer pop up message about information and privacy. Click **Yes**. (You might also want to check the box as shown in the picture to prevent your computer from showing the pop up again.)



11. Your computer might prompt you to upgrade some components of Windows Update. If you see the screen below, click **Download and Install Now**, as shown below. If your computer does not display this screen, skip to step 14.

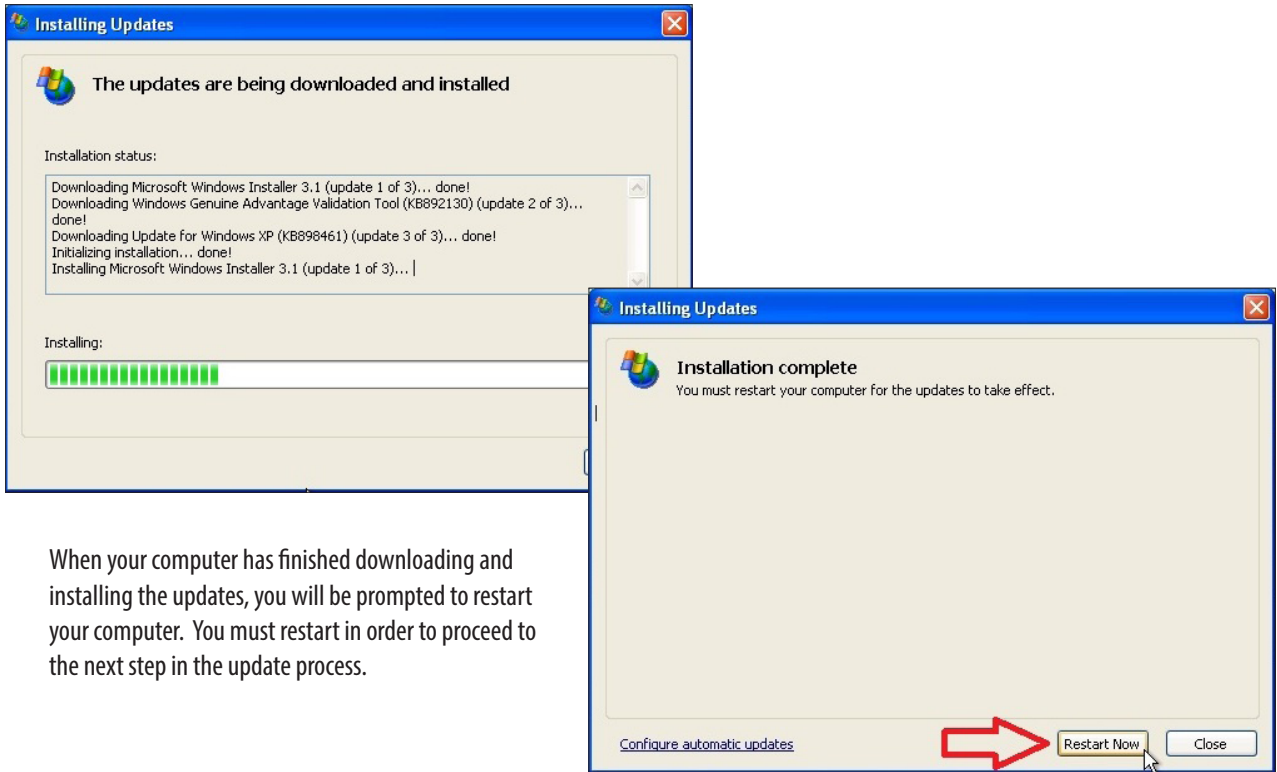


MORE INFORMATION

Windows Update (continued)

Windows XP

12. Your computer will then download and install the updates for the Windows Update software.



When your computer has finished downloading and installing the updates, you will be prompted to restart your computer. You must restart in order to proceed to the next step in the update process.

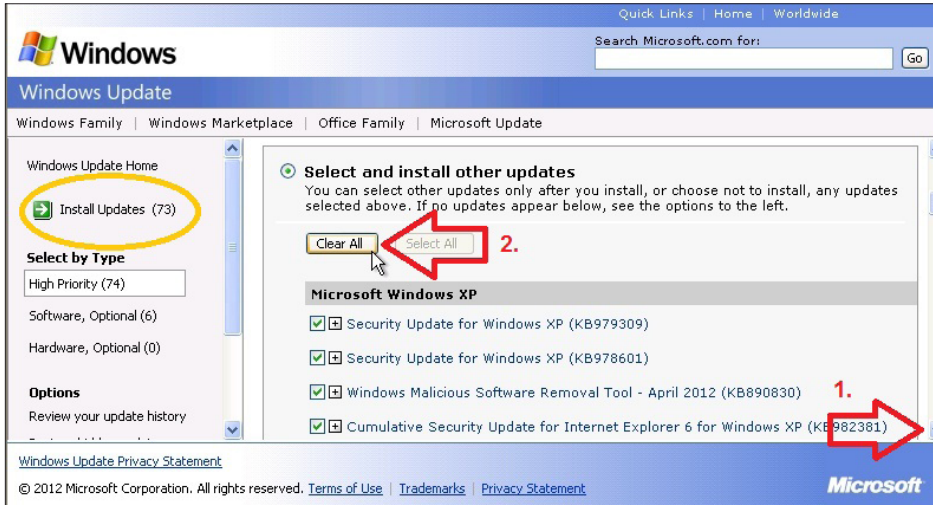
13. Once your computer has restarted, repeat steps 1,2,3, and 9 (open Windows Update and click Custom).



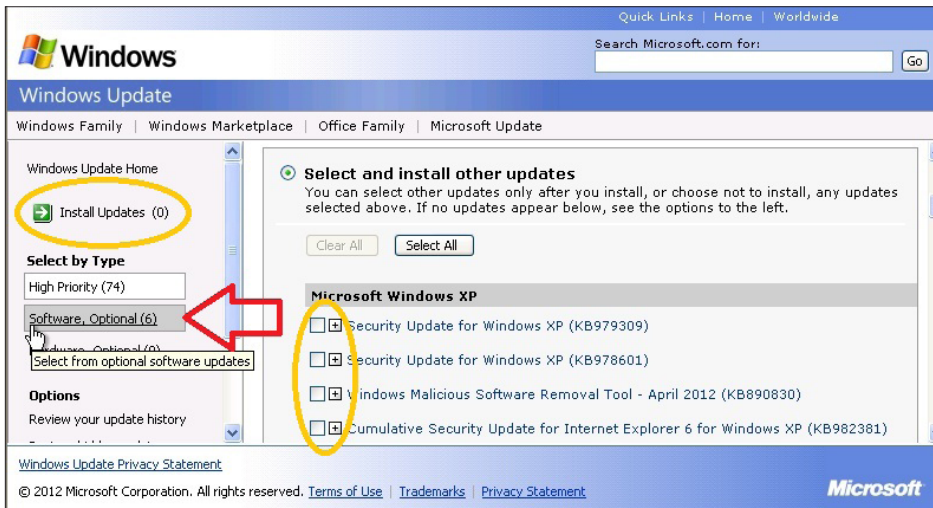
MORE INFORMATION

Windows Update (continued)

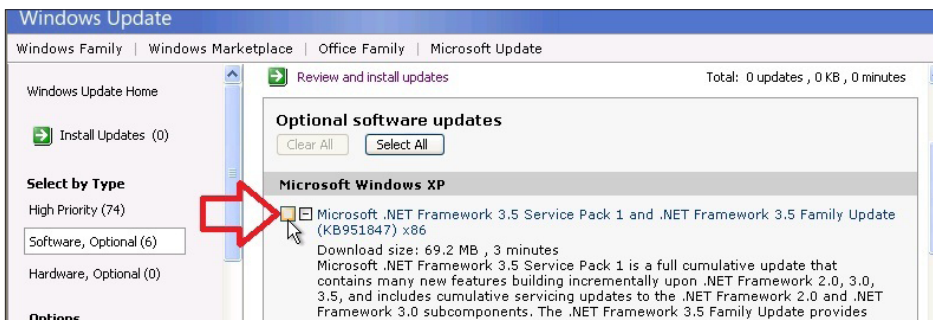
Windows XP



14. After checking for the latest updates for your computer, Windows Update will display a list of updates that are available. First, scroll down and clear any of the High Priority updates that may already be selected.



15. Once you have cleared the other updates, click on **Software, Optional**.



16. Click the box to select the **Microsoft .NET Framework 3.5 Service Pack 1 and .NET Framework 3.5 Family Update (KB951847) x86**.

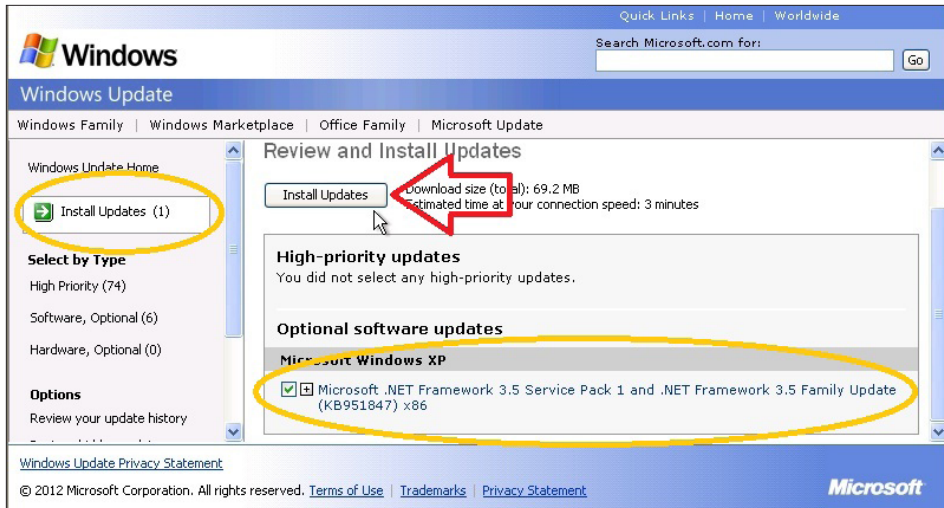
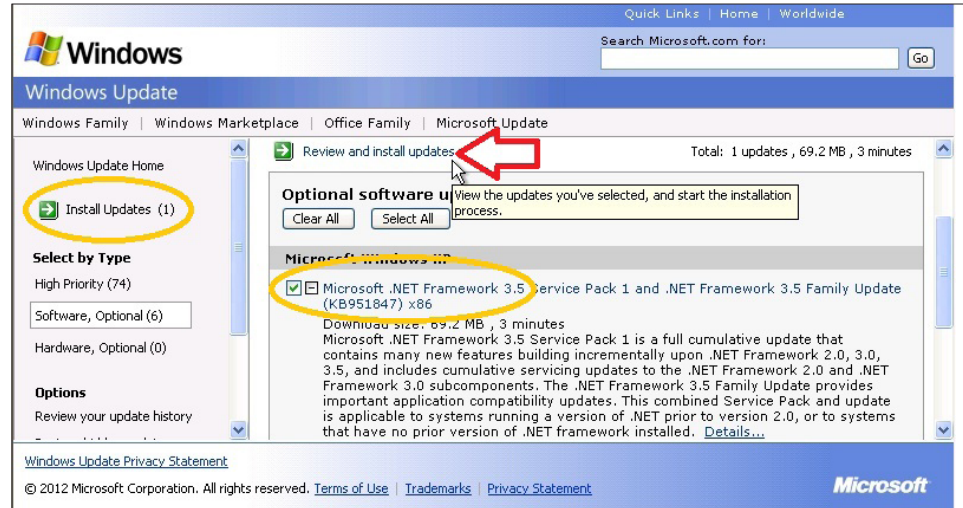


MORE INFORMATION

Windows Update (continued)

Windows XP

17. Once the .NET Framework 3.5 Service Pack is selected, click on **Review and Install Updates**.

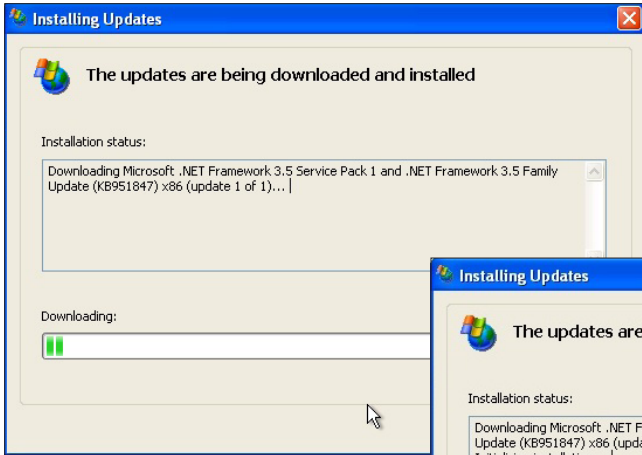


18. Make sure that the .NET Framework is the only update selected, then click **Install Updates**.

MORE INFORMATION

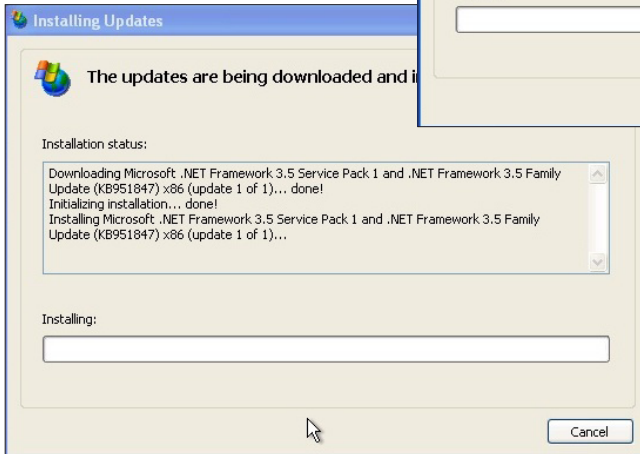
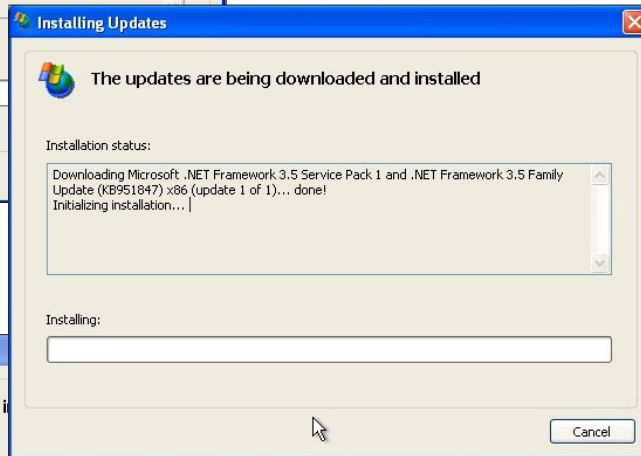
Windows Update (continued)

Windows XP



19. Windows will download the .NET Framework 3.5 Service Pack update.

Windows will also automatically initialize the installation of the update. This step could take a few minutes and it might seem like your computer is stuck, but this is normal and your computer will continue the process automatically when it is ready.



Then, your computer will begin installing the update. Again, this process can take several minutes to get started.

Eventually, your computer will move forward with installing the .NET Framework update.

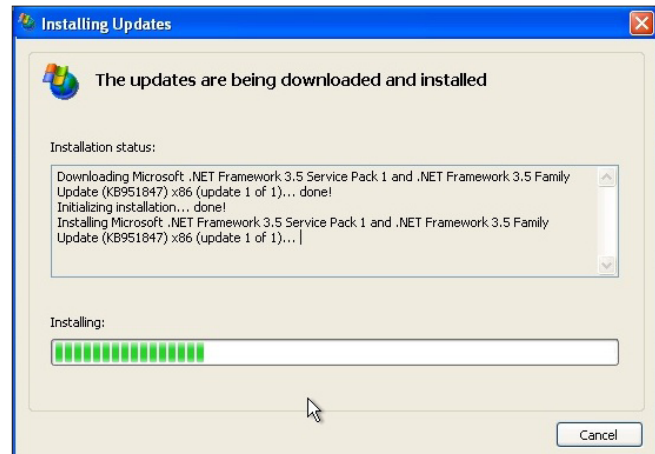
20. Once the .NET installation is complete, click **Restart Now**.



21. Once your computer has restarted, the update process is Complete!

You can now install and run the Bully Dog Update Agent and update your GT.

For more information about updating your GT, see pages 22-27.



CONTACTING TECHNICAL SUPPORT

Technical Support is open Monday-Friday, 7 a.m. – 6 p.m., Mountain Standard Time.

The phone number to contact technical support is (940)783-9915.

You should have all of the following items available when contacting technical support:

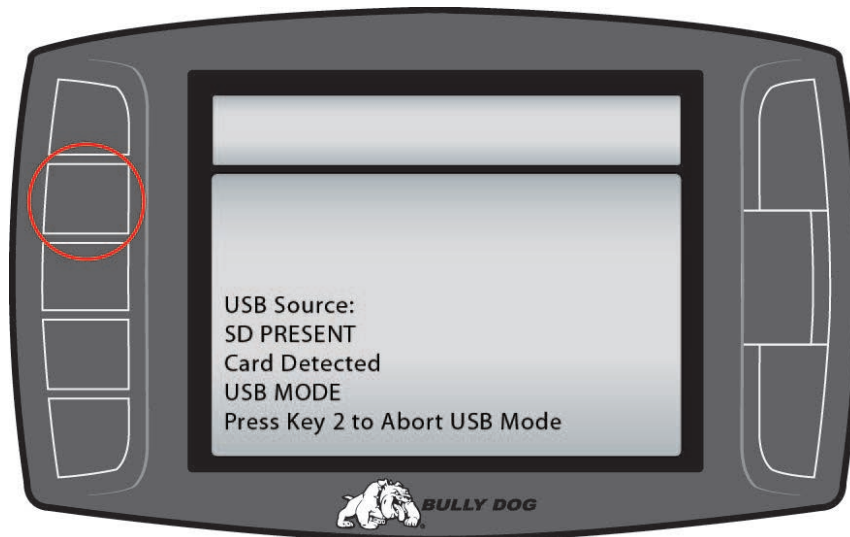
- Your GT tuner
- Your vehicle
- A computer with internet access

USB MODE

When you connect your GT to your computer via a USB cable, it enters USB Mode.

In order to use the Update Agent, keep the GT in USB Mode.

If you want to use your computer to power the GT and allow you to access some of the GT's functions when it is not connected to your vehicle, you can Abort USB Mode. In order to Abort USB Mode, press the second key from the top on the left side, as shown in the picture below:



TRANSMISSION RELEARN PROCESS

If you notice rougher shifting on 6.6L Duramax or the 6.0L/6.4 Powerstroke vehicles after installing the tune to your engine computer, you can help your transmission adjust to the additional horsepower by following the Transmission Relearn Process described below. Your transmission will also automatically adjust after about 150 miles of regular driving if you prefer not to complete the relearn process.

GM 6.6L Duramax with Allison Transmission

1. At a ¼ throttle get up into 5th gear. Once you are in 5th gear, apply light pressure to the brake pedal until the truck is stopped.
2. At a ½ throttle get up into 5th gear. Once you are in 5th gear, apply light pressure to the brake pedal until the truck is stopped.
3. At ¾ throttle get up into 5th gear. Once you are in 5th gear, apply light pressure to the brake pedal until the truck is stopped.
4. At full throttle get up into 5th gear. Once you are in 5th gear, apply light pressure to the brake pedal until the truck is stopped.
5. Go through the same process with the Tow Haul button on.

Ford 6.0L & 6.4L Power Stroke Automatic Torque Shift Transmission

1. Come to a complete stop and put the tuner on its highest setting.
2. Moderately accelerate to 55 mph.
3. Allow the vehicle to shift into overdrive and while in overdrive, maintain a speed of 55 mph for 15 seconds.
4. Lightly apply the brake just enough to engage the brake lights, hold brake lights on while maintaining 55 mph for another 15 seconds.
5. Come to a complete stop for 20 seconds.
6. Repeat steps 3 through 5 five additional times.
7. Drive normally and enjoy.



FAQS/TROUBLESHOOTING

Engine Warm-Up Mode

Q. My engine is stuck in warm-up mode and I can't change the power level. What is going on and how can I fix this?

A. This is a feature that we have included with the GT to help people, particularly fleet managers, ensure that their vehicles are properly warmed up before additional power level settings can be used. In some vehicles, this option doesn't turn off when it should, either because the sensor is not present or the setting is too high.

How to fix this problem:

1. Go to the Main Menu.
2. Choose Vehicle Setup.
3. Choose Set Defuel Levels.
4. Scroll down to the bottom of the list.
5. Choose Startup Coolant Temp Level
6. Turn this setting off.
7. Go back to the Main Display screen.

My GT Won't Turn Off

Q. I have turned my vehicle off and removed the key – everything else has turned off. Why won't my GT turn off?

A. The power switch on the OBDII adapter plug is in the "wrong" position. If you want the GT to turn on and off along with the rest of your vehicle, you will need to make sure that the power switch is in the "correct" position and that the power cable is installed correctly. See page 29 for more information about installing the power cable.

My Vehicle Won't Start after I installed the Download

Q. My truck won't start after I installed the download, what happened and how do I fix this?

A. The GT encountered a problem when it was writing to the engine computer. Follow these steps to resolve the problem:

1. Return the truck to stock. See pages 38-40 for more information about this step. Test to see if the engine starts.
2. Update the GT. See pages 20-27. for more information about this step.
3. Install the download again. Test to see if the engine starts.
4. Contact technical support if the problem persists. See page 49 for more information about contacting technical support.

FAQS/TROUBLESHOOTING

My Vehicle Won't Start after Returning to Stock

Q. My truck won't start after I uninstalled the tune. How do I fix this?

A. Follow these steps to get your truck running with the tune uninstalled:

1. Make sure that you have completed all of the preparation steps on pages 32-35.
2. Go to the Main Menu on the GT.
3. Scroll down and choose the Show Settings Option.
4. Check what the GT is showing next to Download.
 - Recovery: go to step 5.
 - Installed or Not Installed: Contact technical support – see page 49 for more information about contacting technical support.
5. Go back to the Main Menu
6. Choose the Install Download option
7. Confirm that you want to complete the Recovery.
8. Follow the onscreen instructions.
9. Once the recovery is complete, try to start your vehicle.
10. If your vehicle still will not start, contact technical support – see page 49 for more information about contacting technical support.

Note: If the Recovery process completes successfully, your truck is returned to stock. You will not need to do another step to uninstall the tune or return the truck to stock. If the Show Setting screen still shows Recovery next to Download, contact technical support to have the unit reset (there will not be a charge to reset from Recovery Mode).

My Vehicle isn't Listed under Change Vehicle

Q. Why isn't my vehicle included in the list under the Change Vehicle option?

A. Chevrolet owners should choose the GMC option that matches the year of their vehicle. If your vehicle is very new or very old, it may not be supported yet.

What Kind of Increased Performance Can I Expect?

Q. How much extra horsepower will my vehicle get? What can I expect for fuel efficiency improvements?

A. See page 2 for information about additional horsepower. Many people do find that the increased horsepower helps them get the most mileage out of their fuel as possible. However, since fuel efficiency varies so much between different vehicles and drivers, there is no way to accurately predict fuel mileage increases. To get the best gas mileage possible, make sure to calibrate and use the Driving Coach to improve your driving habits. See pages 12-14 for more information about the Driving Coach.



FAQS/TROUBLESHOOTING

DPF Delete

Q. Will the GT delete my DPF?

A. No. Bully Dog does not offer DPF delete. Bully Dog will never offer DPF delete.

Crazy Larry

Q. Can I get the Crazy Larry tune on my GT?

A. No. Crazy Larry is no longer available. Due to EPA regulations, it will not be offered again.

I Don't Feel Extra Power

Q. Why can't I feel the extra horsepower?

A. If your vehicle was just returned from the dealer, you might have forgotten to return the vehicle to stock. See pages 38-39 for more information on returning to stock. See page 40 for more information on checking to see if your vehicle was returned to stock and what to do if it was not returned to stock. If you can't feel the extra horsepower after installing the tune, contact technical support. See page 49 for more information on contacting technical support.

PTO

Q. What is the PTO option during GT setup?

A. The PTO option is a power take-off option. If this hardware option is installed on your truck, it will allow you to use your engine to provide power to external devices. This option is not available on most vehicles, which is why the GT will most likely only give you the "No" option during the install process.