



INSTALLATION INSTRUCTIONS

VEHICLE APPLICATION

Year: **2007 - 2010**
 Make: **Chevrolet/GMC**
 Model: **2500HD / 3500**
 Engine: **6.6L Duramax LMM**

TOOLS REQUIRED

- 10mm Wrench & Socket
- T-20 Security Torx Wrench (Supplied w/ Kit)
- 5/16" Nut Driver or Flat Blade Screwdriver
- Phillips Screwdriver

S&B FILTER MAINTENANCE

- Cleanable (**KF-1035**). If the enclosed filter is Red, it came pre-oiled from the factory. Please visit www.sbfilters.com for exact oil amount required after cleaning.
- Disposable (**KF-1035D**). If the enclosed filter is White, it is a disposable filter and should be discarded once it reaches capacity. This filter (**does not require oil**). For more info on S&B's disposable filter, visit www.sbfilters.com.

NOTES

Kit may not fit with the following Aftermarket Parts installed:

- Body Lift or Lowering Kit
- Custom Hood
- Throttle Body Spacer/ Upgrade

CARB STATUS - Pending

Product will be submitted to Air Resources Board for approval shortly.

Not Legal for use in CA or other states adopting CA emissions standards"
 See Page 3 for more info.

BEFORE YOU START

- Please read the entire product guide before proceeding.
- Ensure all components listed on page 4 are present.
- If you are missing any of the components, call our customer support at (909) 947-0015.
- Do not work on your vehicle while engine is hot.
- Make sure the engine is turned off and the vehicle is in Park or the Parking Brake is set.

1. With the ignition switched off and the parking brake set, disconnect the negative battery cables on both batteries. **Note: Failure to disconnect the battery may cause the CEL to illuminate upon completion of the installation and subsequent operation. Do not skip this step!**



2. Disconnect the MAF sensor harness.



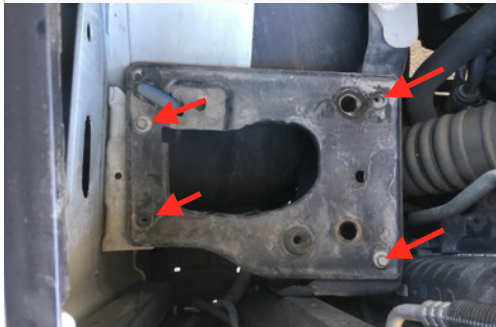
3. Loosen both hose clamps and remove the stock intake tube from the vehicle.



4. Pull up on the stock air box to release the prongs from the two rubber grommets on stock air box tray.



5. Remove the four bolts on the stock air box tray and remove the tray from the vehicle. Be sure to save the speed clips underneath. They will be reused to install the Intake Box (B) in Step 9.



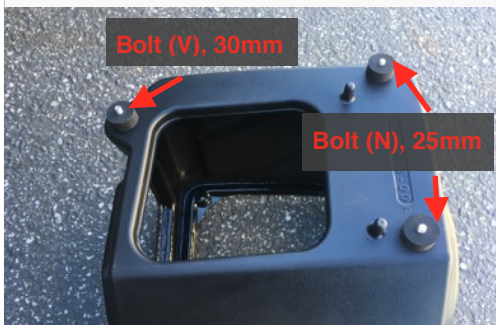
6. Insert the Fender Seal (H) onto the Intake Box (B).



7. Insert the Tube Seal (G) onto the Intake Box (B).



8. Place the M6 Bolts (N & V) and Washers (O) through the mounting holes on the Intake Box (B) then press the Spacer Grommet (W) onto the bolts. Note which M6 bolts goes where. The two mounting holes closest to the engine uses the 25mm and the closest to the fender uses the 30mm.



9. Install the Intake Box (B) into the truck. Align the bolts with the mounting points and tighten.



SEE EXPLODED VIEW ON PAGE 4



INSTALLATION INSTRUCTIONS (CONTINUED)

10. Determine whether or not you want to install the Box Plug (I).



11. Remove the sensor from the stock intake tube. Use the provided MAF Gasket (S), MAF Mount (R), and Screws (L) to install the MAF sensor into the Intake Tube (A).



12. If you want to reuse the stock filter minder, insert the provided Filter Minder Grommet (Q) into the Intake Tube (A). If not, skip to Step 13.



13. Insert the filter minder into the grommet.



14. Install the Grommet Plug (T) into the Intake Tube (A).



15. Insert the Air Filter (F) into the Intake Box (B).



16. Slide the Coupler (E) and two #72 Hose Clamp (U) onto the Intake Tube (A). Tighten the hose clamp closest to the tube. Leave the other end loose.



17. Insert the Intake Tube (A) first into the Intake Box (B) and then slide the other end of the Coupler (E) onto the turbo mouthpiece. Tighten the #72 Hose Clamp (U) on the turbo mouthpiece.



18. Slide the Air Filter (F) onto the Intake Tube (A) and tighten the #80 Hose Clamp (K).



19. Press the Lid Seal (D) into the grooves on the Intake Box (B).



20. Remove the protective covering from the Clear Lid (C).



SEE EXPLODED VIEW ON PAGE 4

INSTALLATION INSTRUCTIONS (CONTINUED)

21. Place the Clear Lid (C) on top of the Intake Box (B) and secure the lid using the four provided Lid Screw (P) and Rubber Washer (M).

22. Reconnect the MAF sensor harness.

23. Reconnect the negative terminal on both batteries. Inspect your installation, make sure the kit is properly positioned and all fasteners are secure. Affix the ID label near the intake kit. The installation is now complete.



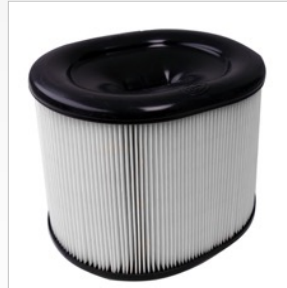
RELATED ITEMS FOR YOUR PURCHASE



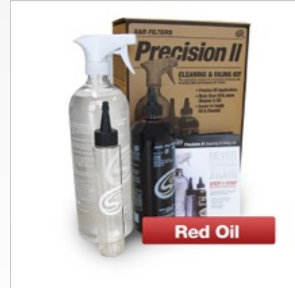
Air Filter Wrap
SKU# WF-1023



Replacement Cotton Filter
SKU# KF-1035



Replacement Dry Filter
SKU# KF-1035D



Precision II: Cleaning & Oil Kit
SKU# 88-0008

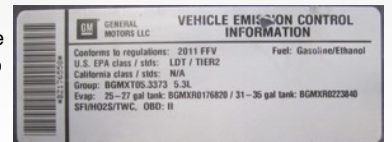
Order online today at www.sbfilters.com or through your local S&B distributor.

PERFORMANCE TESTING

- Engage parking brake and start your engine. Listen for abnormal noises. If an air leak is detected, re-inspect hoses and connections as they may need to be repositioned and tightened.
- S&B FILTERS recommends that you keep your OE intake system in the event it is required in the future.
- In order to maintain your warranty, all connections and components must be checked periodically for alignment and for proper tension on all connections. Failure to do so may void your warranty.
- Use only S&B FILTERS cleaning and oil products to service your filter. Using any other brand oil and or cleaners on your S&B air filter may void your warranty.

WARNING!

If your vehicle has a Vehicle Emission Control Information decal affixed to the factory airbox, a new replacement label must be obtained and installed in a readily visible position in the engine compartment in order to remain CARB compliant. Failure to do so will prevent the vehicle from passing a smog check. Replacement labels can be ordered from your local dealership. Regulations state that the VECI label shall not be affixed to any equipment which is easily detached from the vehicle. Label placement, under the hood on a painted surface is recommended.



EMISSIONS STANDARD

The California Air Resource Board (CARB) requires that an E.O. identification label be applied to the vehicle in order to pass a smog check inspection when a Performance Intake Kit has been installed. You must place the E.O. label provided on or near the intake kit after installation so that a smog check technician can easily verify the E.O. number. As of April 2009, S&B has never had a product where CARB denied an exemption request; however, the exemption process with CARB can take as long as 18 months. Check the status of the exemption process by looking up a specific part number at www.sbfilters.com. The CARB Exemption number and/or status is listed under the Product Details section for each part number. If the status shows as "Pending," CARB has yet to issue an exemption. Products that have not been issued an EO number are street legal in most states, but may not be used on emission controlled vehicles in the state of California and are for off road use only. If you purchased your kit from S&B Filters directly, we will automatically mail you your Exemption Sticker when it is issued to us. If you purchased your kit from an authorized S&B Filters Dealer, log onto our web site and register to receive your Exemption Sticker.

SEE EXPLODED VIEW ON PAGE 4



EXPLODED VIEW



ITEM	QTY.	DESCRIPTION	P/N	ITEM	QTY.	DESCRIPTION	P/N
A	1	INTAKE TUBE	AL1265-00	O	3	WASHER, FLAT, M6	AI1535-00
B	1	INTAKE BOX	AL1241B-00	P	4	SCREW, TRUSS, 1/4-20	AI1684-00
C	1	CLEAR LID	AI1716-00	Q	1	FILTER MINDER GROMMET	AI1563-00
D	1	LID SEAL	AI1766-04	R	1	MAF PLATE	AI1822-00
E	1	COUPLER	AI1354C-00	S	1	MAF GASKET	AI1823-00
F	1	AIR FILTER	KF-1035	T	1	GROMMET PLUG	AI1705-00
G	1	BOX SEAL	AI1717C-00	U	2	HOSE CLAMP, #72	AG1009-00
H	1	FENDER SEAL	AI1829C-00	V	1	BOLT, HEX, M6 X 30mm	AI1414-00
I	1	BOX PLUG	AI1718C-00	W	3	SPACER GROMMET	AI2051-00
J	—	FILTER MINDER (NOT INCLUDED WITH THE KIT)					
K	1	HOSECLAMP, #80	AG-1010-00				
L	2	SCREW, PAN HEAD, 8-32	AI1837-00				
M	4	RUBBER WASHER	AI1571-00				
N	2	BOLT, HEX, M6 X 25mm	AI1415-00				