



FILTERS

COLD AIR INTAKE

INSTALLATION INSTRUCTIONS:

P/N: 75-5110 / 75-5110D





FILTERS

BREATHE EASY. YOUR ENGINE & WARRANTY ARE PROTECTED.™

Thank You! for purchasing your new S&B Filters intake kit. If at any time you need additional assistance with installation or have any other questions or comments, feel free to call our customer service department at 909-947-0015. You can also take advantage of our live chat at www.sbfilters.com and connect with an S&B representative immediately. We hope you enjoy your new S&B Filters product and thank you for your continued support. Breathe Easy. Your Engine and Warranty Are Protected.

VEHICLE APPLICATION:

YEAR: 2016 - 2017

MAKE: Chevrolet/GMC

MODEL: 2500 / 3500

ENGINE: 6.0L V8

APPROX. INSTALL TIME: 1HRS | 00MIN

TOOLS REQUIRED:

- 8mm, 10mm, 14mm Socket/Wrench
- 1/4" Socket/Wrench or Flat Blade Screwdriver
- T15 Torx (Supplied)
- Phillips Screwdriver
- Panel Poppers

NOTES:

Kit may not fit with the following Aftermarket Parts installed:

- Body Lift or Lowering Kit
- Custom Hood
- Throttle Body Spacer/ Upgrade

CARB STATUS - PENDING

Product will be submitted to Air Resources Board for approval shortly.

*Not Legal for use in CA or other states adopting CA emissions standards"
See Page 2 for more info.*

S&B FILTER MAINTENANCE:

- Cleanable (KF-1062). If the enclosed filter is Red, it came preoiled from our factory. Please visit www.sbfilters.com for exact oil amount required after cleaning.
- Disposable (KF-1062D). If the enclosed filter is White, it is a disposable filter and should be discarded once it reaches capacity. This filter **does not require oil**. For more info on S&B's disposable filter, visit www.sbfilters.com.

BEFORE YOU START

- Please read the entire product guide before proceeding.
- Ensure all components listed on pages 3 & 4 are present.
- If you are missing any of the components, call our customer support at (909) 947-0015.
- Do not work on your vehicle while engine is hot.
- Make sure the engine is turned off and the vehicle is in Park or the Parking Brake is set.

GENERAL INFORMATION AND WARNINGS

Air Box Plug Testing

Stock intake boxes are a significant contributor to poor air flow which is why S&B designs custom air boxes with secondary and/or enlarged openings. With that said, S&B recognizes the benefits of cooler air, so we have included a plug to seal off the opening if so desired. For optimal performance, we recommend that the intake be used without the end cap except in conditions of extreme heatwave.

Performance Testing

- After your installation is complete engage parking brake and start your engine. Listen for abnormal noises. If an air leak is detected, re-inspect hoses and connections as they may need to be repositioned and tightened.
- S&B FILTERS recommends that you keep your OE intake system in the event it is required in the future.
- In order to maintain your warranty, all connections and components must be checked periodically for alignment and for proper tension on all connections. Failure to do so may void your warranty.
- Use only S&B FILTERS cleaning and oil products to service your filter. Using any other brand oil and/or cleaners on your S&B air filter may void your warranty.

Warning!

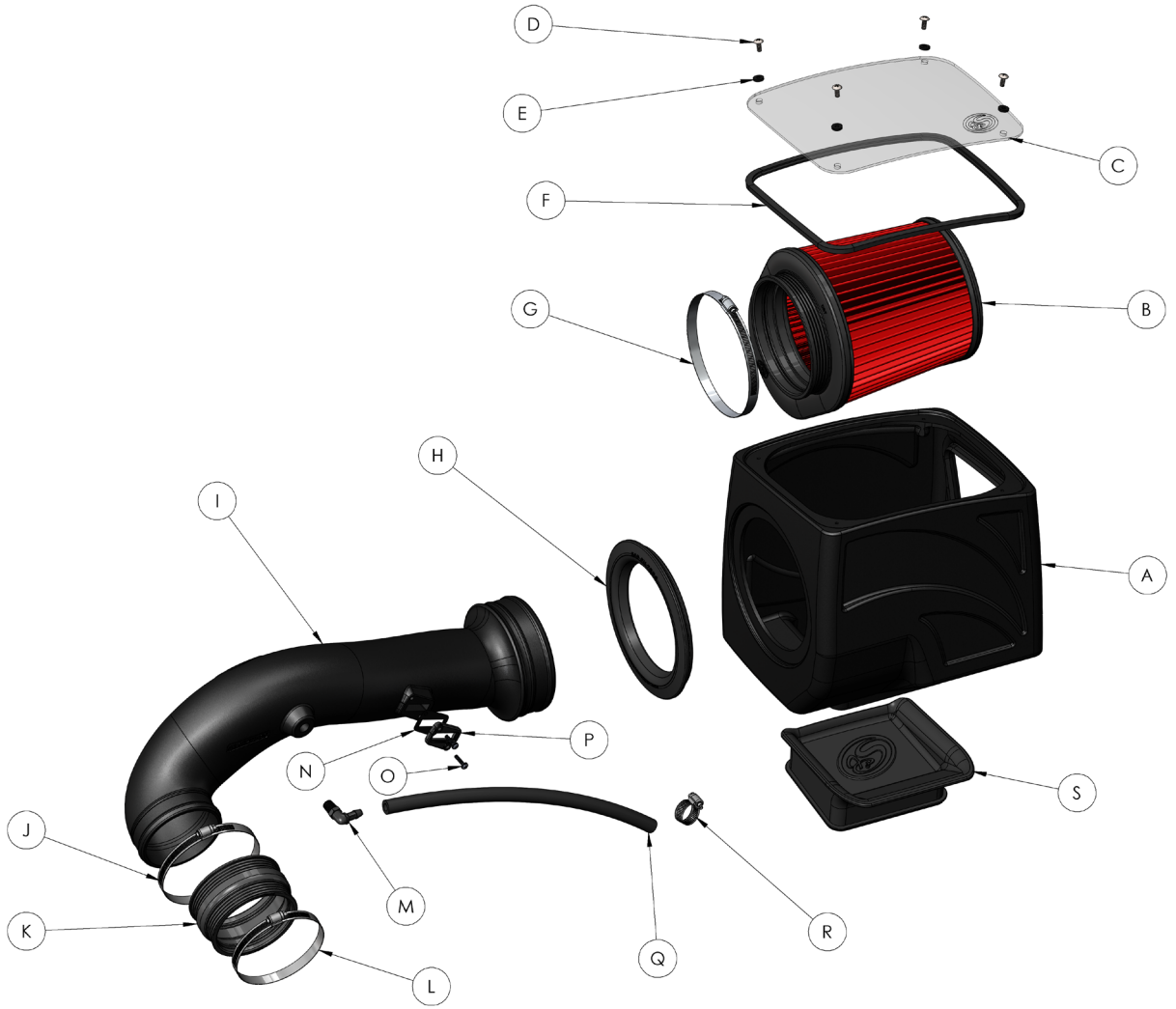
If your vehicle has a Vehicle Emission Control Information decal affixed to the factory airbox, a new replacement label must be obtained and installed in a readily visible position in the engine compartment in order to remain CARB compliant. Failure to do so will prevent the vehicle from passing a smog check. Replacement labels can be ordered from your local dealership. Regulations state that the VECI label shall not be affixed to any equipment which is easily detached from the vehicle. Label placement, under the hood on a painted surface is recommended.



Emissions Standard

The California Air Resource Board (CARB) requires that an E.O. Identification label be applied to the vehicle in order to pass a smog check inspection when a Performance Intake Kit has been installed. You must place the E.O. Label provided on or near the intake kit after installation so that a smog check technician can easily verify the E.O. Number. The exemption process with CARB can take as long as 18 months. Check the status of the exemption process by looking up a specific part number at www.sbfilters.com. The CARB Exemption number and/or status is listed under the Product Details section for each part number. If the status shows as "Pending," CARB has yet to issue an exemption but the product has been submitted. Products that have not been issued an E.O. number are street legal in most states, but may not be used on emission controlled vehicles in the state of California and are for off road use only. If you purchased your kit from S&B Filters directly, we will automatically mail you your Exemption Sticker when it is issued to us. If you purchased your kit from an authorized S&B Filters Dealer, log onto our web site and register to receive your Exemption Sticker.

EXPLODED VIEW:



PARTS LIST: 75-5110/75-5110D

ITEM	QTY	DESCRIPTION	PART NUMBER
A	1	AIR BOX	AL1235B-00
B	1	AIR FILTER	KF-1062
C	1	CLEAR LID	AI1691-00
D	4	SCREW, FLAT, #10-24 X 1/2"	AI2005-00
E	4	LID WASHER	AI2057-00
F	1	LID SEAL	AI1636-03
G	1	HOSE CLAMP, #88	AG1011-00
H	1	TUBE SEAL	AI1689C-00
I	1	INTAKE TUBE	AL1325-00
J	1	HOSE CLAMP, #72	AG1009-00
K	1	STEP COUPLER	AI1542C-00
L	1	HOSE CLAMP, #64	AG1018-00
M	1	HOSE BARB	AI1307-00
N	1	MAF GASKET	AI1823-00
O	2	SCREW, SEMS, 8-32 X 3/4"	AI1837-00
P	1	MAF PLATE	AI1822-00
Q	1	HOSE, 3/8" X 13"	AI1037-04
R	1	HOSE CLAMP, #10	AG1035-00
S	1	BOX PLUG	AI1700C-00
ITEMS BELOW ARE NOT SHOWN IN THE EXPLODED VIEW			
T	1	T15 TORX TOOL	AI1585-00

AM0365-00 REV-A 03/01/2018

HARDWARE PACKS
HP1538-00
AG1009-00
AG1018-00
AI1037-04
HP1407-00
AI1837-00
AI1822-00
AI1823-00
HP1535-00
AI2005-00
AI2057-00
HP1540-00
AI1307-00
AG1035-00
HP1539-00
AI1691-00
AI1636-03

INSTALLATION STEPS:

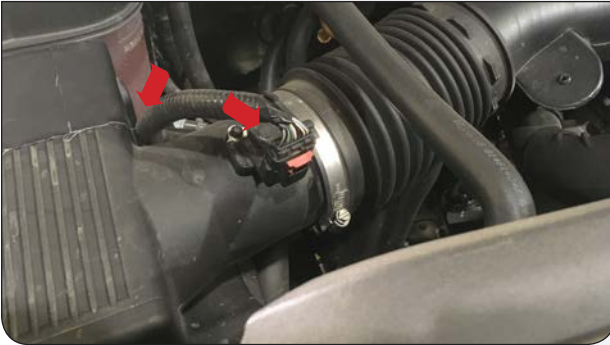
- 1** With the ignition switched off and the parking brake set, disconnect the negative battery cable on both sides. **Note: Failure to disconnect the battery may cause the CEL to illuminate upon completion of the installation and subsequent operation. Do not skip this step!**
Tool Required: 10mm Socket/Wrench



- 2** Remove the engine cover and set it aside. The engine cover will be reinstalled in Step 28.



- 3** Disengage the red locking clip and disconnect the MAF sensor harness from the MAF sensor. Pop out the harness clip attached to the stock air box.
Tool Required: Panel Popper



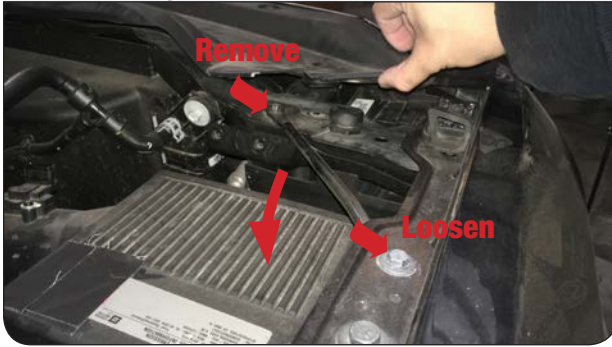
- 4** Disconnect the CCV hose attached to the stock intake tube.



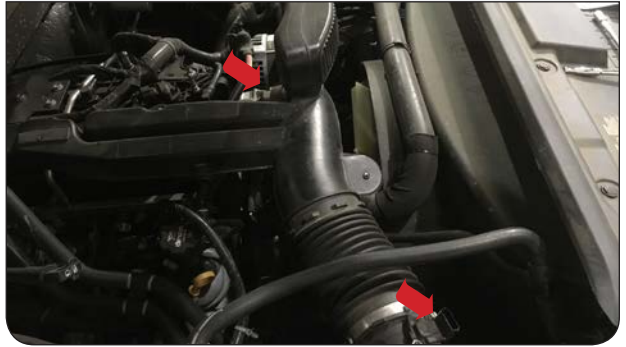
- 5** Remove and set aside the two plastic push pins on the passenger side of the radiator shroud to access the front bolt securing the cross member. The plastic push pins will be reused in Step 27.
Tool Required: Panel Popper



- 6** Loosen the bolt on the fender side of the cross member, then loosen and remove the bolt from underneath the radiator shroud then rotate the cross member out of the way. The bolts will be reused in Step 27.
Tool Required: 10mm Socket/Wrench



- 7** Loosen the hose clamps at the throttle body and air box. Do not remove the intake tube yet.
Tool Required: 8mm Socket/Wrench



- 8** Disconnect the intake tube attached to the air box and slightly prop it up. Disconnect or cut off the radiator hose clip attached to the stock intake tube. Be extremely careful not to puncture the radiator hose. Remove the intake tube from the vehicle.
Tool Required: Panel Popper or Wire Cutters



- 9** Lift up and remove the stock air box from the vehicle



- 10** Remove the four bolts securing the air box tray, then remove the air box tray from the vehicle. Set the hardware aside, they will be reused in Step 18. Double check to make sure that the clips nuts are still attached to the metal flange that was underneath the air box tray.
Tool Required: 10mm Socket/Wrench



INSTALLATION STEPS:

- 11** Disconnect the CCV hose on the engine side and remove it from the vehicle. Use a flat blade screw driver to disengage the tab.
Tool Required: Flat Blade Screwdriver



- 12** Disconnect the two push pins securing the plastic wire harness tray to the fender. Separate the wire harness from the tray then remove the tray from the vehicle. Reroute the wire harness underneath the metal flange with the clip nuts.



- 13** Install the Tube Seal (H) onto the Air Box (A).



- 14** Determine if you want to install the Box Plug (S) onto the Air Box (A). See the "Air Box Plug" note on Page 2 for more information. If the Box Plug is desired, simply press the Box Plug into the box opening until it snaps into place.



- 15** Carefully remove the MAF sensor from the stock air box lid and install the MAF sensor onto the Intake Tube (I) with the supplied MAF Gasket (N), MAF Plate (P) and #8-32 Screws (O). Do not over tighten.
Tool Required: T15 Torx, Phillips Screwdriver



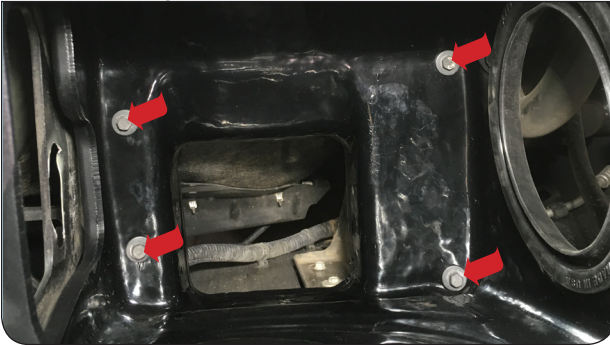
- 16** Install the Hose Barb (M) into the Intake Tube (I) until finger tight, then turn it one to two complete turns with a wrench. Match the position of the barb as shown in the picture below.
Tool Required: 14mm Wrench



- 17** Install the Step Coupler (K) onto the throttle body with Hose Clamps #72 and #64 (J & L). The side with the smaller diameter goes onto the throttle body. Tighten Hose Clamp #64. Do not over tighten. Leave Hose Clamp #72 loose.
Tool Required: 8mm Socket/Wrench



- 18** Place the Air Box (A) into the vehicle and secure to the stock mounting locations with the four stock bolts removed in Step 10. For an easier install, first secure the air box on the fender side then secure the other bolts.
Tool Required: 10mm Socket/Wrench



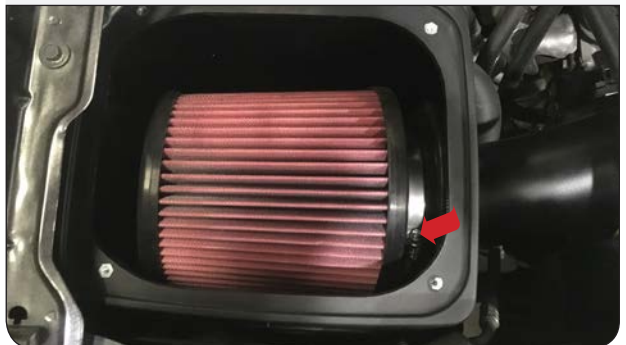
- 19** Place the Air Filter (B) into the Air Box (A).



- 20** Install the Intake Tube (I) through the Tube Seal (H) and Step Coupler (K). Tighten Hose Clamp #72 (J) on the step coupler. Do not over tighten.
Tool Required: 8mm Socket/Wrench



- 21** Install the Air Filter (B) onto the Intake Tube (I) and tighten Hose Clamp #88 (G). Position the air filter in the same position as shown below.
Tool Required: 8mm Socket/Wrench



INSTALLATION STEPS:

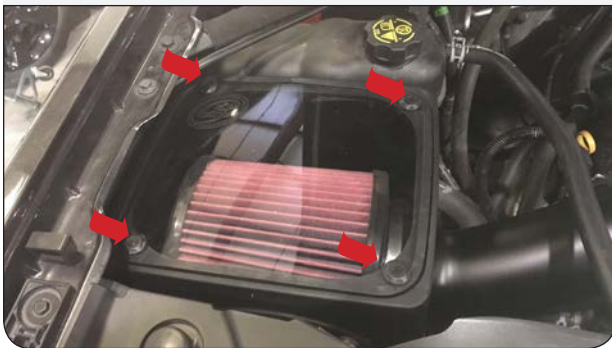
22 Remove the protective covering off the Clear Lid (C).



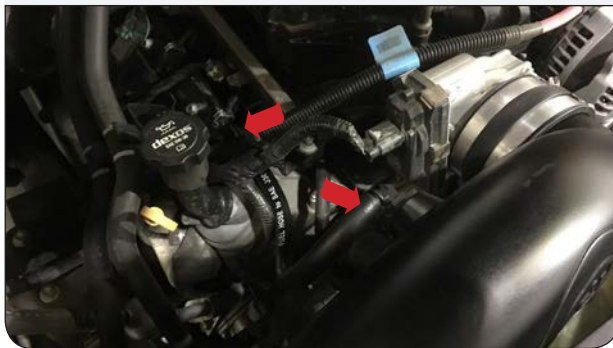
23 Install the Lid Seal (F) around the Clear Lid (C).



24 Install the Clear Lid (C) onto the Air Box (A) with the #10-24 Screws (D) and Lid Washers (E).
Tool Required: Phillips Screwdriver



25 Connect the Hose (Q) from the CCV port on the engine side with Hose Clamp #10 (R) to the Hose Barb (M) on the Intake Tube (I). Tighten the hose clamp onto the engine side. Do not over tighten.
Tool Required: 1/4" Socket/Wrench



26 Reconnect the MAF harness back into the MAF sensor and engage the red locking clip.



27 Reinstall the cross member and the plastic push pins by tightening the two bolts from Step 6 and reinserting the three push pins from Step 5.
Tool Required: 10mm Socket/Wrench



28 Reinstall the engine cover.



29 Reconnect the negative terminal on the battery. Inspect your installation, make sure the kit is properly positioned and all fasteners are secure. Keep all stock parts in case you would ever need to reinstall the stock intake assembly. Affix the ID label near the intake kit. The installation is now complete.
Tool Required: 10mm Socket/Wrench



RELATED ITEMS FOR YOUR PURCHASE

Order Online today at www.sbfilters.com or through your local S&B distributor.



**Replacement
Cotton Filter**
SKU# WF-1062



**Replacement
Dry Filter**
SKU# KF-1062D



Filter Wrap
SKU# WF-1041



**Precision II:
Cleaning & Oil Kit**
SKU# 88-0008

