



**DOWNLOAD THE LATEST
INSTALL MANUALS AT
www.bddiesel.com**



BD Iron Horn Series

Dodge 5.9L T4 Turbo Kit

1045169 - 1045179

Dodge 2003-2007

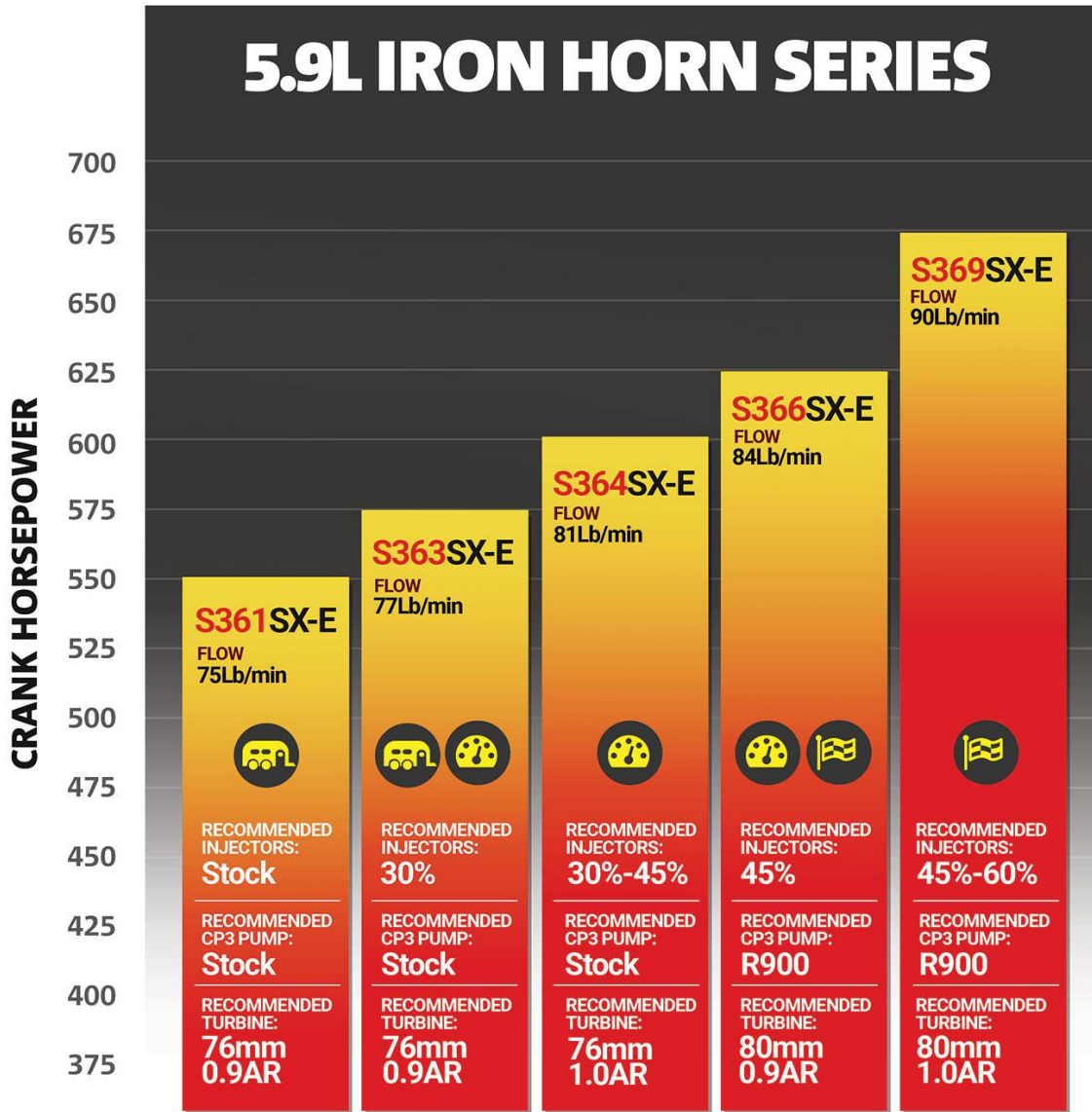
PLEASE READ ALL INSTRUCTIONS BEFORE INSTALLATION

BD ENGINE BRAKE, INC.

Plant Address: 33541 MacLure Rd, Abbotsford, BC, Canada V2S 7W2

US Shipping Address: 88-446 Harrison St, Sumas, WA 98295 | US Mailing Address: PO Box 231, Sumas, WA 98295

Phone: 1-800-887-5030 | Fax: 604-853-8749 | Internet: www.bddiesel.com



| BD Part Number | Compressor Wheel Inducer Size | Turbine Wheel/ Housing AR Ratio |
|----------------|-------------------------------|---------------------------------|
| 1045169* | 64.5mm | 76mm - 1.0AR |
| 1045170* | 61mm | 76mm - .91AR |
| 1045171 | 64.5mm | 76mm - .91AR |
| 1045172* | 63mm | 76mm - .91AR |
| 1045173 | 63mm | 80mm - .91AR |
| 1045174 | 64.5mm | 80mm - .91AR |
| 1045175 | 64.5mm | 80mm - 1.0AR |
| 1045176* | 66mm | 80mm - .91AR |
| 1045177 | 66mm | 80mm - 1.0AR |
| 1045178 | 69mm | 80mm - .91AR |
| 1045179* | 69mm | 80mm - 1.0AR |

* BD's recommended turbine sizes

Please be aware that non-wastegated turbochargers are extremely sensitive to overspeed failures. Turbocharger must be sized correctly to match our horsepower and boost goals. Do not exceed the recommended turbo wheel speed. Compressor outlet pressure can be used to estimate turbo wheel speed. A boost leak will cause higher wheel speeds at a given boost pressure. The below table is rated at a maximum rpm of 3000.

Whether you are towing, at high altitude, or at WOT, high Exhaust Gas Temperature (EGT) is a sign you are operating outside the intended purpose of the turbocharger.

| Engine: Dodge Cummins 5.9L ISB | | | |
|---------------------------------------|---------------------------------------|------------------------|-----------------------------|
| Turbocharger | Max Compressor Outlet Pressure | Max Shaft Speed | Max Crank Horsepower |
| S361/76 | 38 psi | 133,000 RPM | 550 |
| S363/76 | 40 psi | 133,000 RPM | 575 |
| S364.5/76 | 43 psi | 133,000 RPM | 600 |
| S366/80 | 45 psi | 126,000 RPM | 625 |
| S369/80 | 50 psi | 126,000 RPM | 675 |

Overspeed can result in turbine wheel separation, worn/damaged journal bearings, thrust damage, and split compressor wheels. Using a correctly sized turbocharger will reduce the chances of failure.

- Note you can always overspeed a turbocharger. Play it safe, there are no warranties for overspeed.
- Factory intercooler can have a 5psi pressure drop, i.e. 45psi manifold pressure = 50 psi compressor outlet pressure.
- All out testing is done at the standard RPM range of the engine. If you exceed this RPM, your turbo speed will also increase.
- Extended injector duration will contribute to high EGT's and turbo over speed.



BD ENGINE BRAKE, INC.








Plant Address: 33541 MacLure Rd, Abbotsford, BC, Canada V2S 7W2

US Shipping Address: 88-446 Harrison St, Sumas, WA 98295 | US Mailing Address: PO Box 231, Sumas, WA 98295

Phone: 1-800-887-5030 | Fax: 604-853-8749 | Internet: www.bddiesel.com

Kit Contents:

Please check to make sure that you have all the parts listed in this kit **before** you start the disassembly of your truck.

| Turbo Kit | | | | |
|---|--|--|---|---|
| Turbo | 1462431 | 1453105 | 1405100 | 1405101 |
|  |  |  |  |  |
| <i>Turbo</i> | <i>Stud; M10x25mm</i> | <i>Drain; Oil</i> | <i>Clamp; Exh Elbow</i> | <i>Exh Elbow</i> |
| Qty: 1 | Qty: 4 | Qty: 1 | Qty: 1 | Qty: 1 |
| 148062 | | 1453152 | FT-110120342 | |
|  | |  |  | |
| <i>Gasket; Oil Drain</i> | | <i>Fitting; 1/4MNPTxORFS (-6)</i> | <i>Bolt; Hex 3/8"-16x3/4</i> | |
| Qty: 1 | | Qty: 1 | Qty: 2 | |
| 1453240 | 1045987-T4 | | 1045986-T4 | |
|  |  | |  | |
| <i>Wastegate Connector</i> | <i>T4 Manifold Kit</i> | | <i>T4 Gasket Kit</i> | |
| Qty: 1 | Qty: 1 | | Qty: 1 | |

BD ENGINE BRAKE, INC.

Plant Address: 33541 MacLure Rd, Abbotsford, BC, Canada V2S 7W2

US Shipping Address: 88-446 Harrison St, Sumas, WA 98295 | US Mailing Address: PO Box 231, Sumas, WA 98295

Phone: 1-800-887-5030 | Fax: 604-853-8749 | Internet: www.bddiesel.com

Introduction

The BD Turbo kit is an economical solution to have a S300 kit on your Cummins. This kit includes a non-wastegated T4 Turbocharger, and a high-performance manifold. The kit retains the stock intake. This is great for those looking to upgrade their stock turbo without breaking the bank.

Required Tools

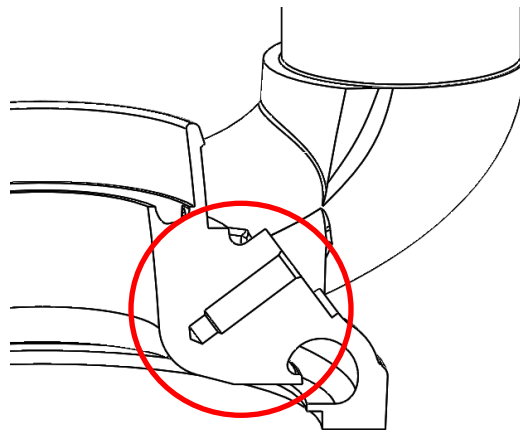
- 7mm-22mm Metric Socket and Wrench Set
- 5/16"-9/16" Socket and Wrench Set
- Hose Clamp Plier
- Torque Wrench

Optional Accessories

- | | |
|--------------------------------|-------------------|
| • BD Flow-Max fuel lift pump | 1050305D/1050310D |
| • Throttle Sensitivity Booster | 1057730/31/32 |
| • X-Intake Elbow | 1041555 |

ATTENTION

Please note that speed sensor port on the compressor cover is **NOT** drilled through.



BD ENGINE BRAKE, INC.

Plant Address: 33541 MacLure Rd, Abbotsford, BC, Canada V2S 7W2

US Shipping Address: 88-446 Harrison St, Sumas, WA 98295 | US Mailing Address: PO Box 231, Sumas, WA 98295

Phone: 1-800-887-5030 | Fax: 604-853-8749 | Internet: www.bddiesel.com

Removal

VEHICLE SHOULD BE SAFELY SECURED BEFORE INSTALLATION.

1. Disconnect batteries and raise vehicle.
2. Disconnect the IAT sensor.



3. Remove the intake hose using a 7mm socket.



BD ENGINE BRAKE, INC.

Plant Address: 33541 MacLure Rd, Abbotsford, BC, Canada V2S 7W2

US Shipping Address: 88-446 Harrison St, Sumas, WA 98295 | US Mailing Address: PO Box 231, Sumas, WA 98295

Phone: 1-800-887-5030 | Fax: 604-853-8749 | Internet: www.bddiesel.com

4. Remove the passenger side inner fender well with a 5/16" socket.

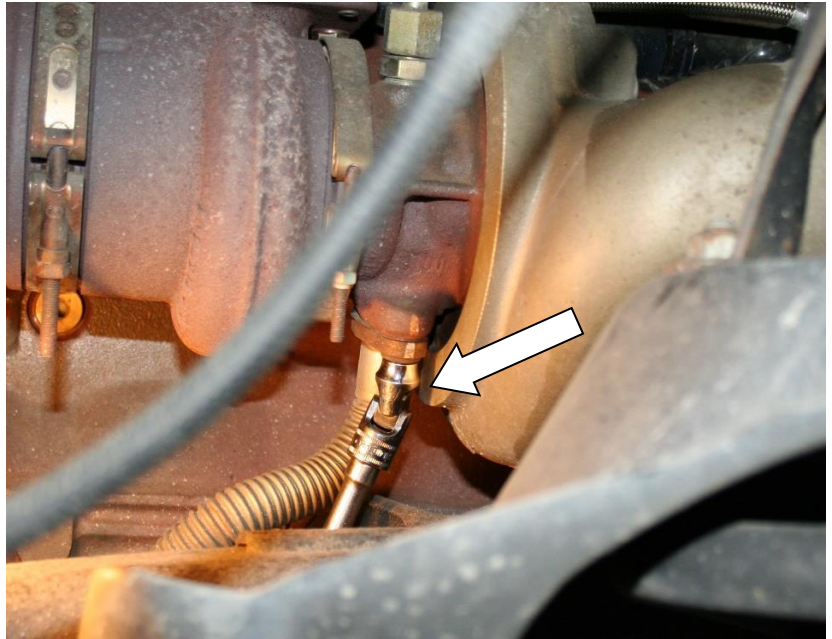


5. Remove the exhaust cast elbow v-band clamp from the back of the turbo with a 7/16" socket.

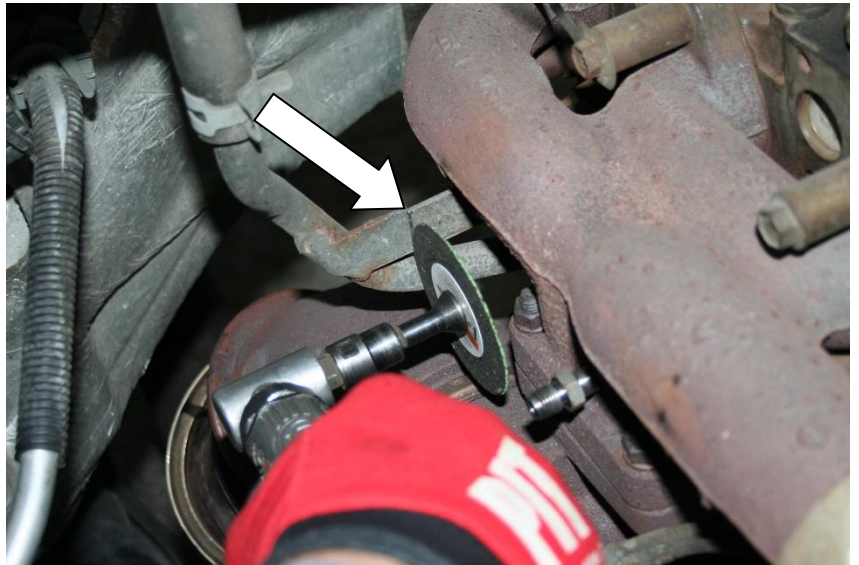


6. Remove the turbo oil drain line with a 10mm socket. Remove the oil drain out of the engine block.

****Note:** Some models require you to loosen gear clamps to remove the oil drain hose.



7. Cut the heater pipe bracket to assist in releasing the manifold.



BD ENGINE BRAKE, INC.

Plant Address: 33541 MacLure Rd, Abbotsford, BC, Canada V2S 7W2

US Shipping Address: 88-446 Harrison St, Sumas, WA 98295 | US Mailing Address: PO Box 231, Sumas, WA 98295

Phone: 1-800-887-5030 | Fax: 604-853-8749 | Internet: www.bddiesel.com

8. Remove turbo oil feed from the turbo.



9. On 05-07 trucks, you will need to disconnect the wastegate solenoid connector.



BD ENGINE BRAKE, INC.

Plant Address: 33541 MacLure Rd, Abbotsford, BC, Canada V2S 7W2

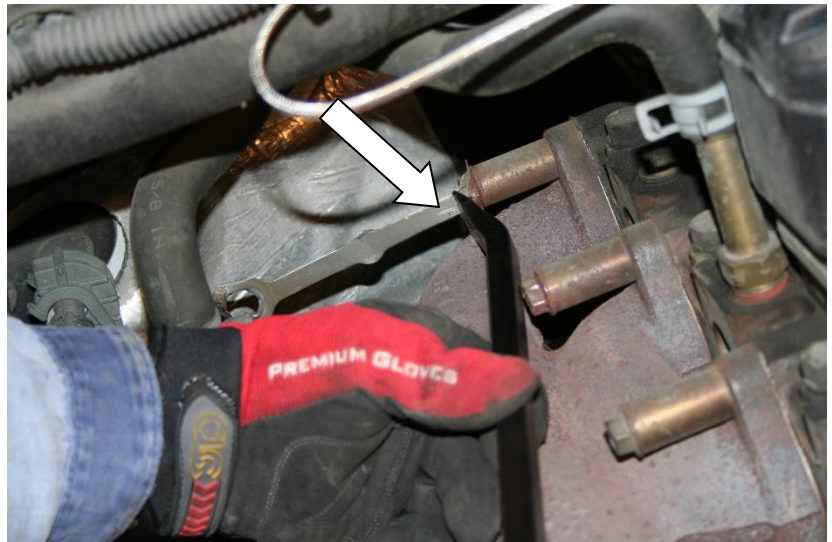
US Shipping Address: 88-446 Harrison St, Sumas, WA 98295 | US Mailing Address: PO Box 231, Sumas, WA 98295

Phone: 1-800-887-5030 | Fax: 604-853-8749 | Internet: www.bddiesel.com

10. Remove the passenger side intercooler hose band clamp with a 7/16" socket.



11. Pry off the metal lock from rear manifold bolts, remove the heater pipe bracket from the bracket.



12. Remove the manifold heat shield with a 15mm socket.



13. Remove the remaining manifold bolts using a 13mm socket.



14. Remove the turbo/manifold assembly from the engine compartment.

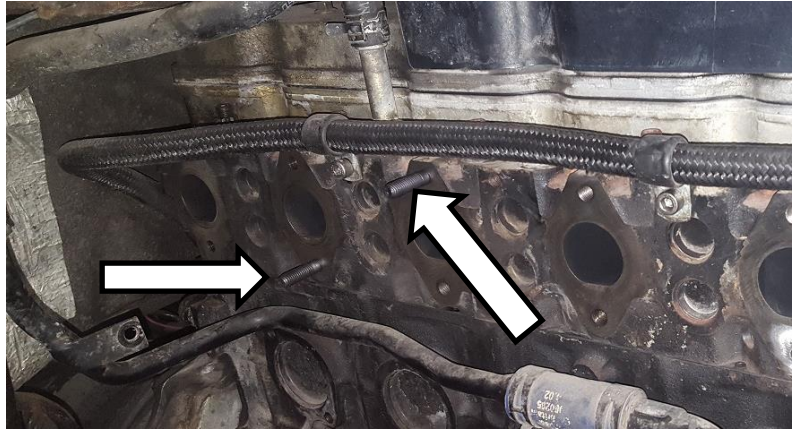
CAUTION: The turbo/manifold assembly is very heavy. You may require help to lift it out safely.



Installation

VEHICLE SHOULD BE SAFELY SECURED BEFORE INSTALLATION.

1. Install 2 30mm M10 studs supplied with the manifold kit in the top position of cylinder 4 and bottom position of cylinder 5. Make sure the mating surface between the manifold and cylinder heads is clean.

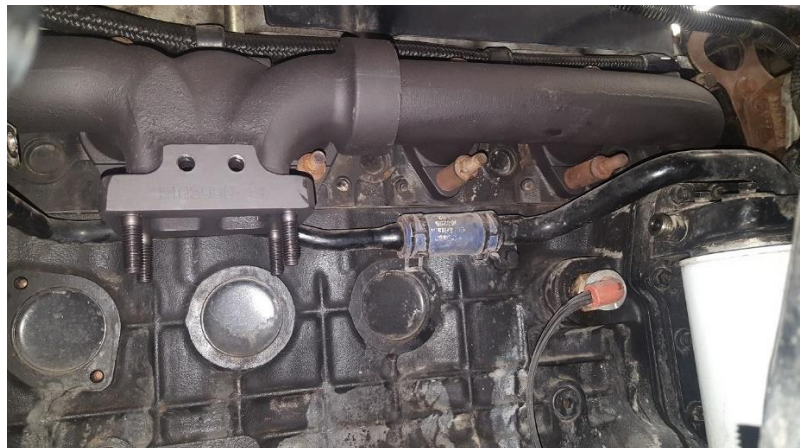


2. Install 4 supplied 25mm M10 studs onto the T4 flange. Use the 1/8NPT plugs to block the port on the manifold if not being used.

****Note:** Discard 4 extra 30mm stud supplied with the manifold kit.



3. Install the BD Manifold using the supplied gaskets.



BD ENGINE BRAKE, INC.

Plant Address: 33541 MacLure Rd, Abbotsford, BC, Canada V2S 7W2

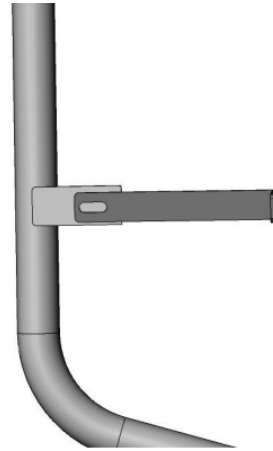
US Shipping Address: 88-446 Harrison St, Sumas, WA 98295 | US Mailing Address: PO Box 231, Sumas, WA 98295

Phone: 1-800-887-5030 | Fax: 604-853-8749 | Internet: www.bddiesel.com

4. Install the coolant line bracket (1405998) as shown.



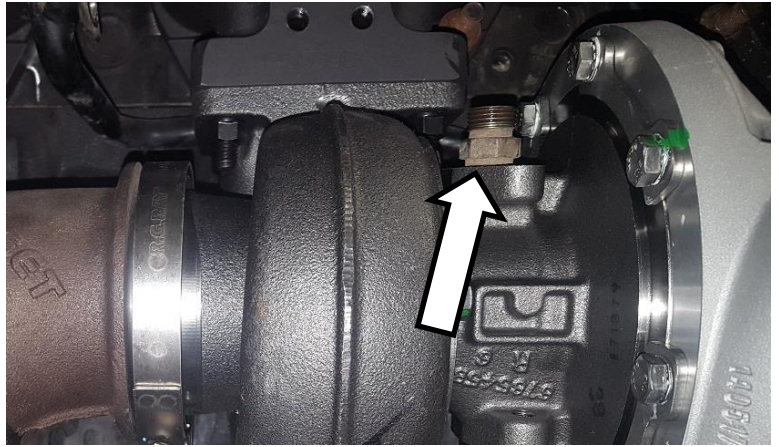
5. Drill a 5/16" hole on the cut off factory coolant bracket and use the provided hardware to secure the brackets together.
6. Tighten manifold, starting from the center and moving in an outward pattern, tighten the manifold nuts and bolts to 35ftlbs.



7. Secure the turbo charger to the manifold with the supplied nuts.
8. Secure the provided exhaust elbow (1405101) to the turbo charger with the supplied clamp (1405100).



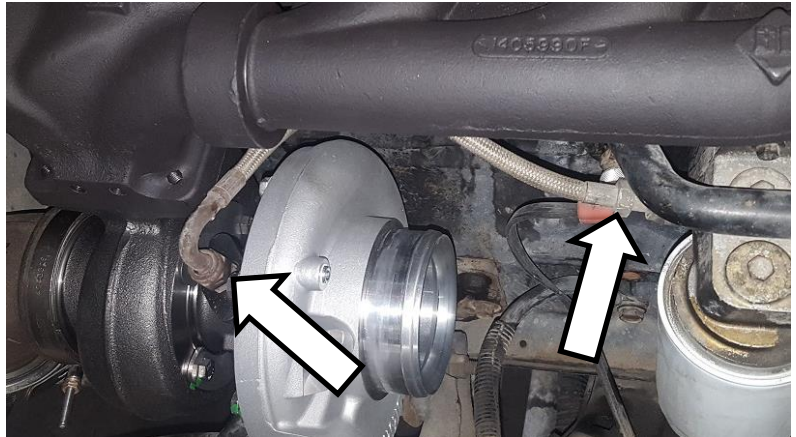
9. Install the supplied (1453152) oil supply fitting onto the turbocharger.



10. Install the supplied corrugated oil drain (Not shown in picture). Shape to fit. Ensure continuous down flow for the oil



11. Install the oil supply line (reuse OE line).



BD ENGINE BRAKE, INC.

Plant Address: 33541 MacLure Rd, Abbotsford, BC, Canada V2S 7W2

US Shipping Address: 88-446 Harrison St, Sumas, WA 98295 | US Mailing Address: PO Box 231, Sumas, WA 98295

Phone: 1-800-887-5030 | Fax: 604-853-8749 | Internet: www.bddiesel.com

12. Connect the CAC pipe and boot to the turbo charger. Tighten clamps.



13. Connect the exhaust to the downpipe. Tighten clamp.



14. Install the intake tube and airbox.
Connect the IAT sensor.
15. Reinstall the inner fender well.
16. Connect batteries.

