

**advanced FLOW engineering** Magnum FORCE Stage-2 Si Cold Air Intake System

**Instruction Manual** P/N: 51-80072-1 / 54-80072-1

Make: **Dodge** Model: **RAM 2500/3500** Year: **1994-2002** Engine: **L6-5.9L (td) Cummins**



- Please read the entire instruction manual before proceeding.
- Ensure all components listed are present.
- If you are missing any of the components, call customer support at 951-493-7100 or e-mail at tech@afepower.com.
- Ensure you have all necessary tools before proceeding.
- Do not attempt to work on your vehicle when the engine is hot.
- Disconnect the negative battery terminal before proceeding.
- Retain factory parts for future use.

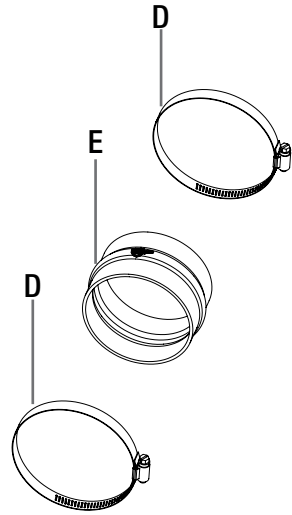
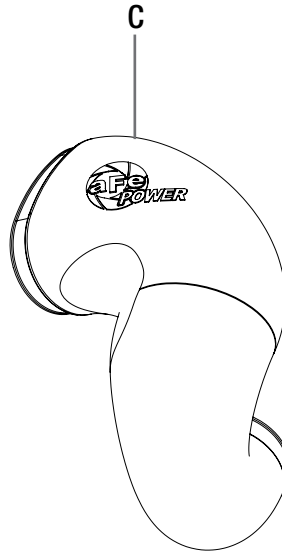
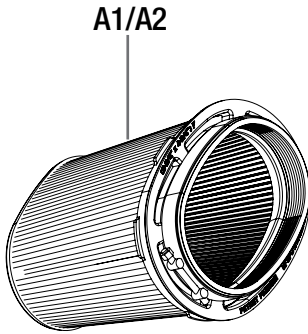
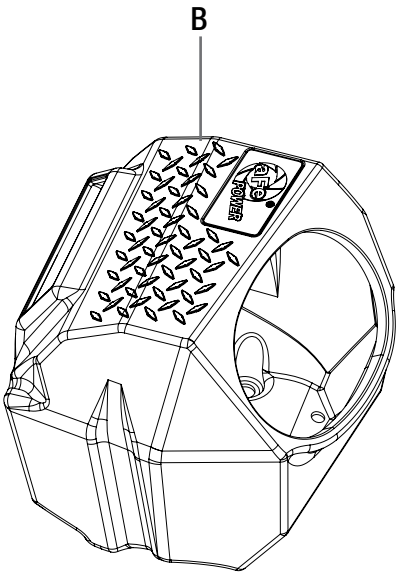
Label	Qty.	Description	Part Number
A1	1	Air Filter (Pro 5R)	24-91092
A2	1	Air Filter (Pro DRY S)	21-91092
B	1	Housing	05-80072B1
C	1	Tube	05-80072B2
D	2	Clamp, #064	03-50006
E	1	Coupling, Silicone Hump	05-01332

**Installation will require the following tools:**

Flat head screwdriver, 8mm nut driver, 11mm nut driver and panel popper (Recommended).

**Emissions Disclaimer:**

This product is not currently CARB exempt and is not available for purchase in California or for use on any vehicle registered with the California Department of Motor Vehicles.



**Figure A****Refer to Figure A for Step 1**

Step 1: Use an 8mm nut driver to loosen the factory clamps (1) at the turbo and the airbox. Remove the factory intake tube (2).



Figure B

**Refer to Figure B for Step 2**

Step 2: Un-clip the upper half of the airbox and remove upper half and air filter.



Figure C

**Refer to Figure C for Step 3**

Step 3: Remove the lower half of the airbox (3) by pulling up to release airbox from its mounting grommets (4).



Figure D

**Refer to Figure D for Step 4**

Step 4: Make sure plastic inserts (5) are still on the mounting pins. If they pulled out and are stuck in the lower half of the airbox grommet, remove them and insert them back on the mounting pins. Remove the plastic air duct (6) that goes through the fender if equipped.



Figure E

**Refer to Figure E for Step 5**

Step 5: Remove all three (x3) grommets (7) from the lower half of the airbox and install them onto the aFe POWER airbox.



**Figure F****Refer to Figure F for Step 6**

Step 6: Install the supplied coupling (8) and one of the supplied clamps (9) onto the turbo inlet and fully tighten the clamp with an 8mm nut driver.



Figure G

**Refer to Figure G for Step 7**

Step 7: Install the aFe POWER airbox (10) into the vehicle. Aligning the three (x3) grommets to their respective studs may take a few attempts.

**Figure H****Refer to Figure H for Steps 8-9**

Step 8: Re-install the plastic scoop you removed earlier by inserting it into the opening on the inside of the aFe POWER airbox (11).

Step 9: Ensure the scoop (12) is properly seated into the vehicle.

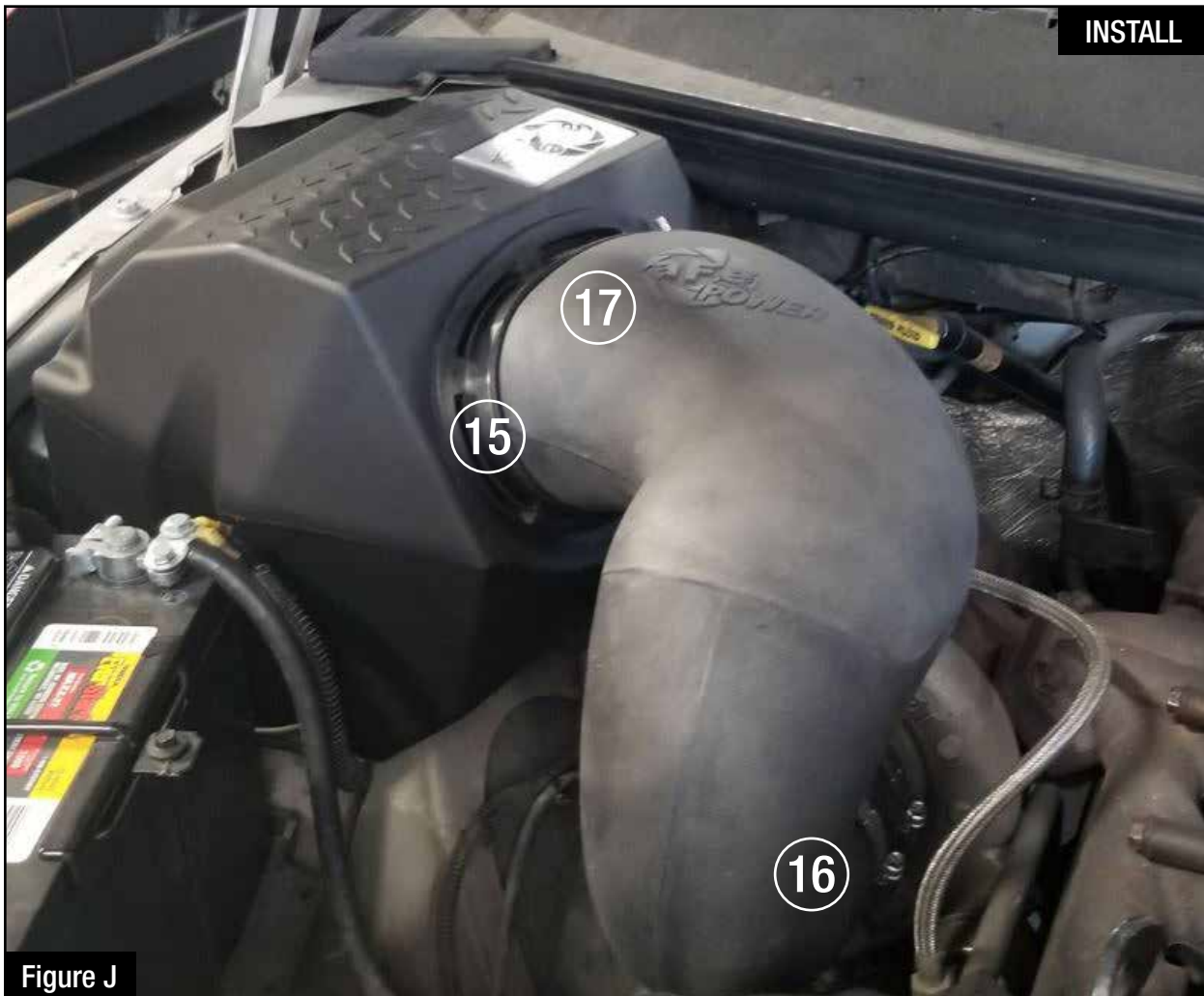


Figure I

**Refer to Figure I for Steps 10-11**

Step 10: Install the filter (13) into the aFe POWER airbox.

Step 11: Install the other supplied clamp (14) onto the end of the coupling, but DO NOT tighten.

**Figure J****Refer to Figure J for Steps 12-13**

Step 12: Install the supplied T-Bolt clamp (15) onto the filter flange.

Step 13: Slip the smaller end of the aFe POWER intake tube (16) into the coupling and swing it over to install it into the filter (17). Tighten the T-bolt clamp with an 11mm nut driver.

**Figure K****Refer to Figure K for Step 14**

Step 14: Ensure all parts are seated correctly and tighten down the supplied clamp (18) on the tube. Double check that all components are tight and secure. Your installation is now complete. Thank you for choosing aFe POWER!

*NOTE: Retighten all connections after approximately 100-200 miles.*

PAGE LEFT BLANK INTENTIONALLY



PAGE LEFT BLANK INTENTIONALLY



PAGE LEFT BLANK INTENTIONALLY



Pro DRY S Air Filter



P/N: 21-91092

Pro 5R Air Filter



P/N: 24-91092

Blue Squeeze Restore Kit



P/N: 90-50501

Pro DRY S Restore Kit



P/N: 90-59999

Intercooler Tubes



P/N: 46-20064-B

Exhaust Manifold



P/N: 46-32019 (For T3)  
46-32020 (For T4)

DFS780 PRO Fuel System



P/N: 77-22011

Turbocharger



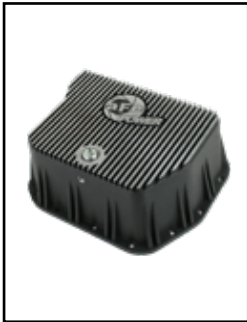
P/N: 46-60110 (Street)  
46-60062-1 (GT Series)

TB-Back Exhaust System



P/N: 49-02033 (No Tip)  
49-42033-B (Blk. Tip)  
49-42033-P (Pol. Tip)

Transmission Pan Cover



P/N: 46-70052

Intercooler Kit



P/N: 46-21062-B (Blk I/C)  
46-20062

Differential Cover w/ Oil



P/N: 46-70032-WL (w/ Oil)  
46-70032 (Blk./Mach)

To purchase any of the items above, view airflow charts, dyno graphs, photos, and video; please go to [aFepower.com](http://aFepower.com).

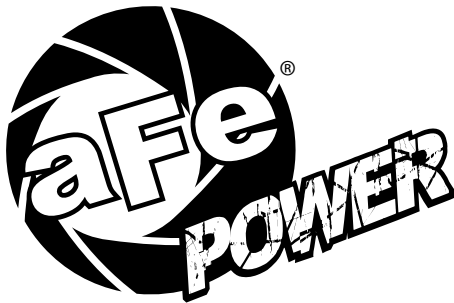
# Warranty

## General Terms:

- aFe warrants their products to be free from manufacturer's defects due to workmanship and material.
- This warranty applies only to the original purchaser of the product and is non-transferrable.
- Proof of purchase of the aFe product is required for all warranty claims.
- Warranty is valid provided aFe instructions for installation and/or cleaning were properly followed.
- Proper maintenance with regular inspections of product is required to insure warranty coverage.
- Damage due to improper installation, abuse, unauthorized repair or alteration is not warranted.
- Incidental or consequential damages or cost, including installation and removal of part, incurred due to failure of aFe product is not covered under this warranty.
- All warranty is limited to the repair and/or replacement of the aFe part. To request Return Goods Authorization ("RGA"), email [RGA@afepower.com](mailto:RGA@afepower.com) or call (951)493-7100. Upon receipt of the RGA, you must return the product to the address provided in the RGA, freight prepaid and accompanied with a dated proof of purchase and the RGA. Upon receipt of the defective product and upon verification of proof of purchase, aFe will either repair or replace the defective product within a reasonable time, not to exceed thirty days.

<b>Product Category</b>	<b>P/N Prefix</b>	<b>Warranty duration</b>
Direct OE Replacement Filters	10, 11, 30, 31, 71, 73	Life of the vehicle
Racing Filters	18	1 year
Universal	21, 23, 24, 72	2 years
Air Intake Systems	50, 51, 52, 53, 54, 55, 56, 57, 58, 75	2 years
Exhaust Systems	49	2 years
Intercoolers & Intercooler Tubes	46-2	2 years
Intake Manifolds	46-1	2 years
Differential Cover	46-7	Life of the vehicle
Exhaust Manifolds	46	2 years
Throttle Body Spacers	46-3	2 years
Fluid Filters	44	90 days
Pre-Filters	28	2 years
Heavy Duty OE Replacement	70	2 years
PowerSports OE Replacement	81, 87	2 years
PowerSports Intake Systems	85	2 years

No other warranty expressed or implied applies nor is any person or advanced FLOW engineering authorized to assume any other warranty. Some States do not allow the exclusion or limitation of incidental or consequential damages or do not allow limitations on how long an implied warranty lasts, so the above limitations or exclusions may not apply to you. This warranty gives you specific legal rights, and you may also have other rights which vary from State to State.



**advanced FLOW engineering, inc.**  
252 Granite Street Corona, CA 92879  
TEL: 951.493.7100 • TECH: 951.493.7134  
E-Mail: [Tech@aFepower.com](mailto:Tech@aFepower.com)