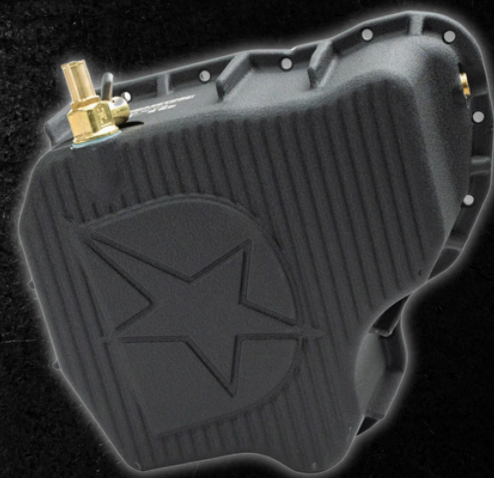


DmaxStore High Capacity Cast Aluminum Engine Oil Pan Installation



Tools Needed
Torque Wrench
Breaker Bar
Metric Wrenches & Sockets (10mm, 15mm, 18mm, 19mm)
Putty Knife, Gasket Scraper and Razer Blade
5mm Allen Wrench with Extensions

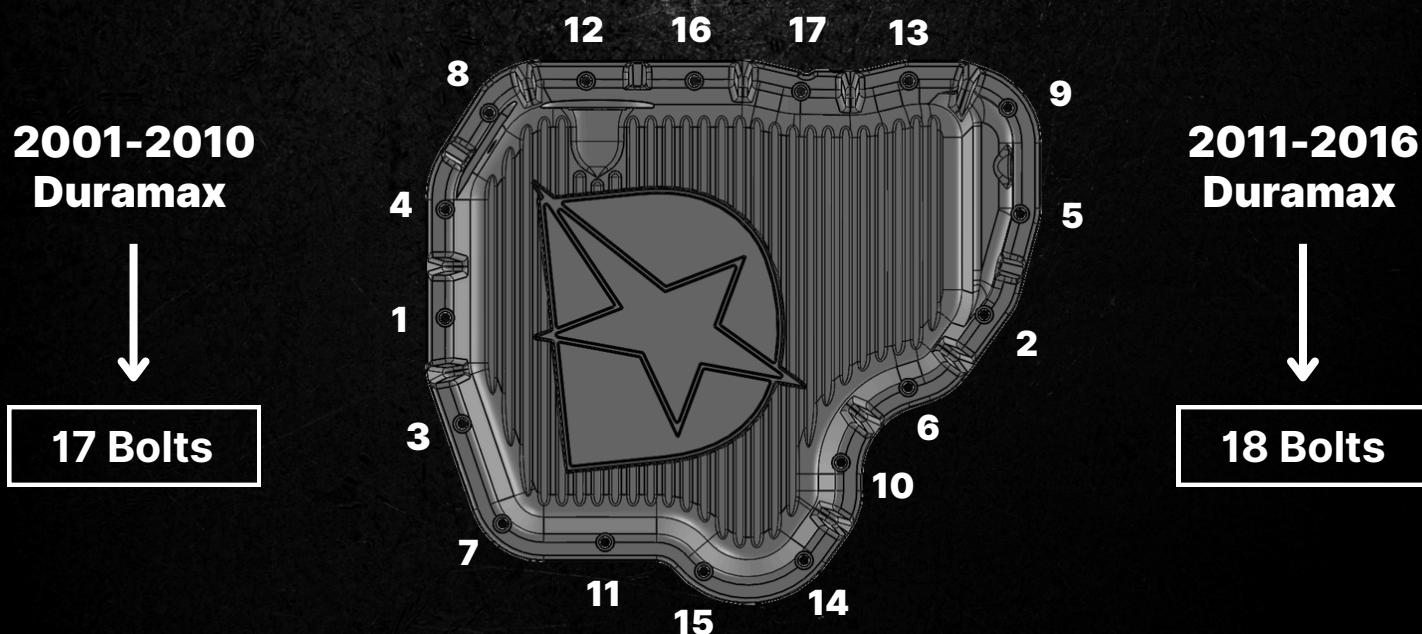
Removing the Factory Oil Pan:

1. Remove the drain plug from the factory pan to drain the engine oil. It is **RECOMMENDED** to allow the engine oil to drain as long as possible to reduce the amount of oil drips when the pan is removed.
2. Remove the skid plates to access the lower engine oil pan.
3. Remove the frame cross-member below the oil pan by removing the four 18mm bolts and nuts. **(If your truck is equipped with a lift kit, more parts may need to be removed).**
4. Disconnect the low oil sensor electrical connector and move the wires out of the way.
5. Using a 10mm socket with an extension remove the two nuts and the 15 bolts holding the lower oil pan to the upper oil pan.
6. Use a strong putty knife or pan seal cutter to loosen the factory oil pan. **Be patient** and start on the driver's side, then go over to the passenger rear and slowly loosen the lower oil pan from the upper oil pan being sure not to damage the upper oil pan sealing surface.
7. Remove the two studs from the upper oil pan.
8. Clean off any remaining sealant to the upper oil pan.

Installation:

1. Remove the oil level sensor from the factory pan and install it into the DmaxStore Oil Pan. It is **RECOMMENDED** to lubricate the o-ring with clean engine oil or assembly lube when installing the sensor into the DmaxStore pan.
2. Install the provided Drain Plug or valve.
3. Apply a 2-3mm wide bead of sealant onto the sealing surface of the DmaxStore Oil Pan. It is **RECOMMENDED** to clean the sealing surface before using RTV Gasket Maker Sealant or a GM Sealant Equivalent.
4. Install the DmaxStore Oil Pan onto the upper oil pan using the seventeen or eighteen 5mm zinc plated bolts. Washers are **NOT** needed for the installation and hand tighten all the bolts.
5. Torque the lower oil pan bolts to 89 in-lbs (7.4 ft-lbs) using the tightening sequence below in **FIGURE 1. (The bolt pattern pictured is for the 2001-2010 Duramax, and for the 2011-2016 Duramax, you will have one additional bolt).**

Figure 1: Bolting Sequence



6. It is **IMPORTANT** to let the sealant cure for at least a few hours before adding oil to the engine. (**24 hours is optimal**). The sealant cures after being exposed to air, so by adding oil before a few hours, you will interrupt the curing process.
7. Connect the oil level sensor.
8. Be sure that all the plugs in the DmaxStore Oil Pan are tight and the Fumoto Drain Valve is closed.
9. Install your new oil filter.
10. Re-install the cross-member and bolts, tightening them to 74 ft-lbs.
11. Re-install the skid plates.
12. Fill the DmaxStore Oil Pan with 11 quarts of motor oil.
13. Start the engine and confirm proper oil pressure. After, shut off the engine and confirm the oil level and add oil if necessary.